

AZUPIN Glass & Hardware
1265 S. Johnson Drive #B,
City Of Industry, CA 91745

PRSRT MKTG
U.S. POSTAGE
PAID
INDUSTRY, CA
PERMIT NO.1721



AZUPIN

Glass & Hardware

Hardware harmony
crystal clarity.

Collection II
2025



HUGE SELECTION OF GLAZING HARDWARE AND SUPPLIES



PRE90H
Standard Shower Hinge. Solid Brass.
Starting at: \$18 each.

BULK DEALS AVAILABLE

1-909-276-7014
azupin.glass

CATALYST
3/8" Clear Tempered Glass, EnduroShield coated,
Stainless Hardware
Starting at: \$300 a set.



AM8X8R
8" Back to Back Handle. Solid Brass.
Starting at: \$18 each.



Hello!

Since its inception in 2022, AZUPIN has been on a relentless journey to reshape the glass and hardware industry. From the very beginning, our vision has been clear: to not only meet the demands of the modern glazing world but to exceed them by pushing boundaries. We have committed ourselves to continuous improvement, tirelessly innovating new technologies that redefine industry standards. Whether it's enhancing logistics, refining pricing structures, or elevating the quality of existing solutions, we strive to deliver excellence in every aspect of our work.

At the heart of AZUPIN lies an unwavering pride in the craftsmanship of our products. Every custom-fabricated item is a testament to the skill and dedication of our team, who pour their expertise and passion into creating solutions that stand the test of time. We believe that exceptional products stem from a foundation of precision, innovation, and an uncompromising commitment to quality.

As we look to the future, AZUPIN is taking bold steps to usher in a new generation of hardware solutions. Founded by glaziers, for glaziers, we understand the unique challenges and aspirations of those in the industry. This deep-rooted connection drives our mission to not only serve but empower the professionals who shape the spaces we live and work in.

Through innovation, craftsmanship, and an enduring dedication to progress, AZUPIN is building a legacy of trust and excellence—one pane, one product, and one innovation at a time.

A handwritten signature in black ink, appearing to be "ad" or similar, with a stylized flourish.

- ABOUT US
CATALYST
RADIANCE
SERENITY
- NIRVANA
HARDWARE
INSPIRATION

Table of CONTENT.

Explore our comprehensive catalog to discover a wide range of offerings. If you are unable to find specific information or items, please don't hesitate to reach out to our hotline or contact our support desk for further assistance. We are here to help.

KBIS 2025



Join us in our booth at #SL2152 and explore our wide variety of glass and hardware. Including commercial & residential components, ranging from **railings, showers, partitions, doors, aluminum, extrusions and more.**



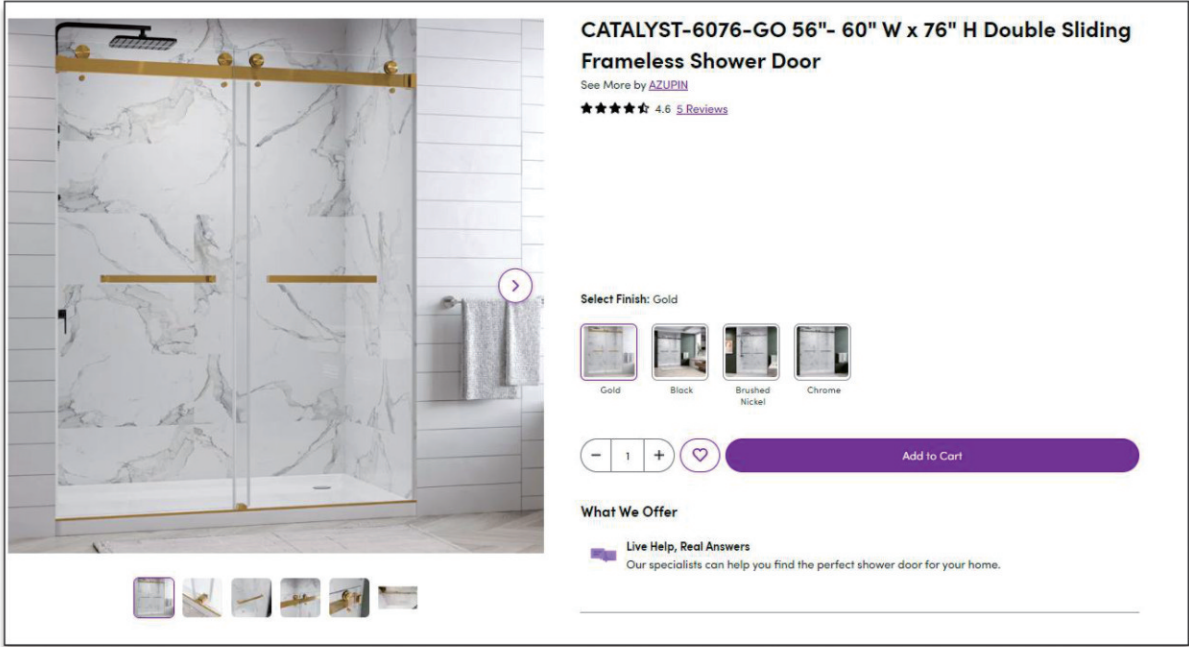
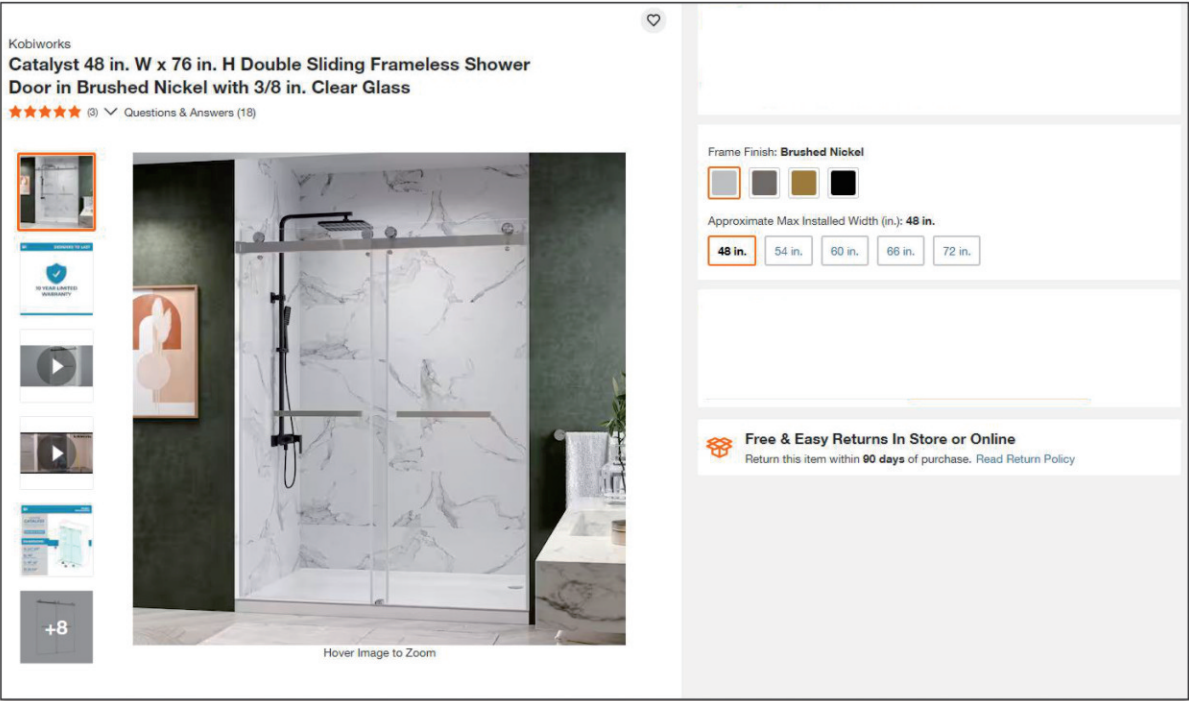
KBIS is a trade show that showcases the latest products, trends, and technologies for kitchen and bath design. It is the largest trade show in North America for the kitchen and bath industry. KBIS is owned by the National Kitchen & Bath Association (NKBA) and is co-located with the International Builders' Show (IBS) in Las Vegas, Nevada.



Now Online!

You can now purchase our products online via HomeDepot, Wayfair and many other sites, just look us up and you'll find it! We have various brand names such as:

- AZUPIN
- KOBWORKS



CATALYST



Wall Mount & Tight Close.

Paired with a beautiful wall mount bracket with a stopper inside to prevent hard impact towards the wall, serving as a soft-holder to prevent the door from opening by itself as well.

Smooth Sliding.

3-5/8" width is required in order for this door to fit perfectly, where a guide bracket securing a "L threshold" will be placed, to guide the door from where to slide and a threshold to prevent water from flowing below.



Adjustable and Noiseless.

Built inside the rollers is a out-of-plumb adjustable system, where it can clear up to 3/8" of out of square on walls, ensuring that our system works with out of plumb showers. With precision cut bars we ensure there is no squeaking and easy to slide.

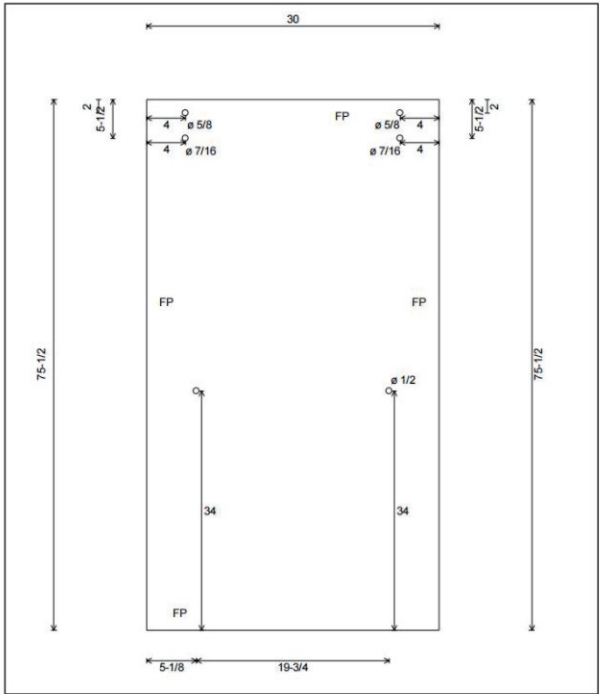
Towel Bar & Finger Pull

This door comes in multiple configurations, colors and even the handles! You can choose between a towel bar or finger pull; in the which we have all in stock. Whichever one fits best in your setting.

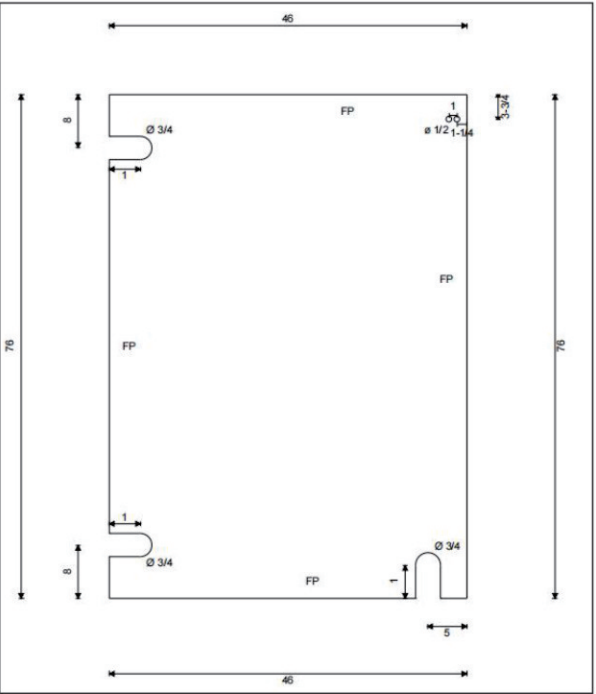


CATALYST - TECHNICAL DETAILS

Technical Drawing - Sliding Door

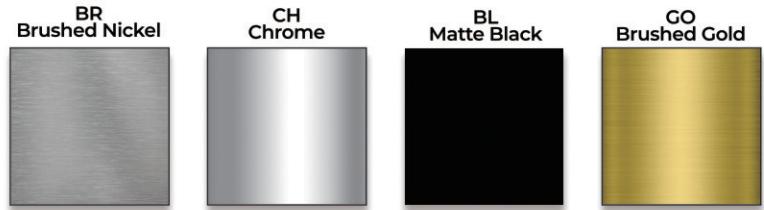


Technical Drawing - Return Panel



CATALYST - STOCK SIZES

OPENING	48"x76"	54"x76"	60"x76"	66"x76"	72"x76"	60"x79"	60"x60"	60"x66"	60"x72"
WIDTH ADJUSTMENT	44"-49"	50"-55"	56"-61"	62"-67"	68"x73"	56"x61"	56"x61"	56"x61"	56"x61"
WALK-IN SIZE	18"-22"	21"-25"	24"-28"	27"-31"	30"-34"	24"-28"	24"-28"	24"-28"	24"-28"
DOOR SIZE	25 1/4"	28 1/4"	31 1/4"	34 1/4"	37 1/4"	31 1/4"	31 1/4"	31 1/4"	31 1/4"



GLASS OPTIONS

- Ultra Clear
- Acid Etched
- Clear



fig. 1
double slider with towel bar
& finger pull combo.

fig. 2
double slider with double
towel bar on a tub.



fig. 3
double slider with obscure
frosted glass

RADIANCE



Wall Mount & Tight Close.

Paired with a beautiful wall mount bracket with a stopper inside to prevent hard impact towards the wall, serving as a soft-holder to prevent the door from opening by itself as well.

Smooth Sliding.

3-5/8" width is required in order for this door to fit perfectly, where a guide bracket securing a "L threshold" will be placed, to guide the door from where to slide and a threshold to prevent water from flowing below.



Adjustable and Noiseless.

Built inside the rollers is a out-of-plumb adjustable system, where it can clear up to 3/8" of out of square on walls, ensuring that our system works with out of plumb showers. With precision cut bars we ensure there is no squeaking and easy to slide.

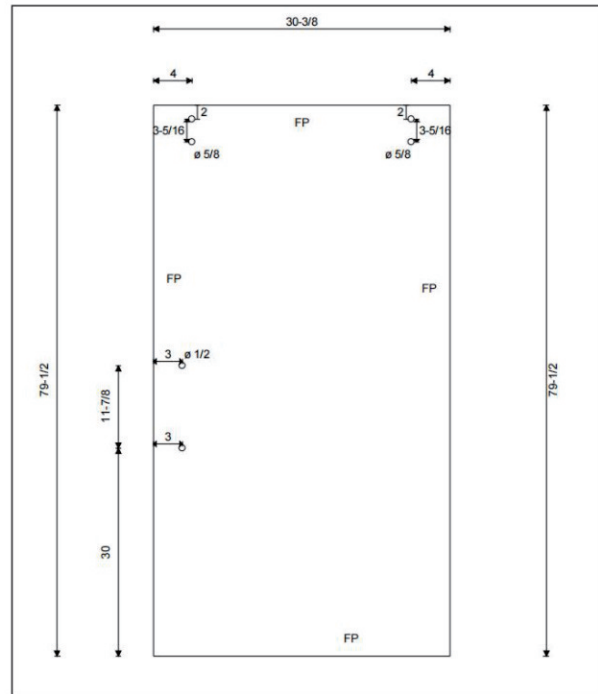
Handle & Knob

This door comes in multiple configurations and colors; You can choose between having a towel bar in the panel or not. In the which we have all in stock. Whichever one fits best in your setting.

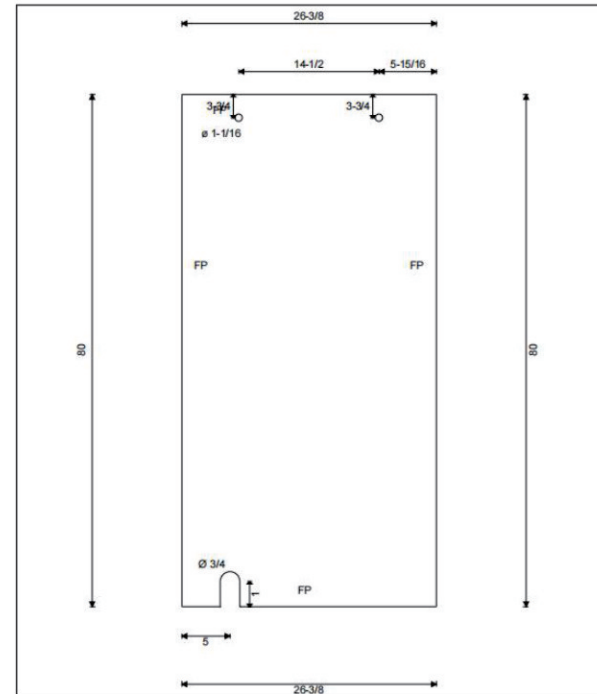


RADIANCE - TECHNICAL DETAILS

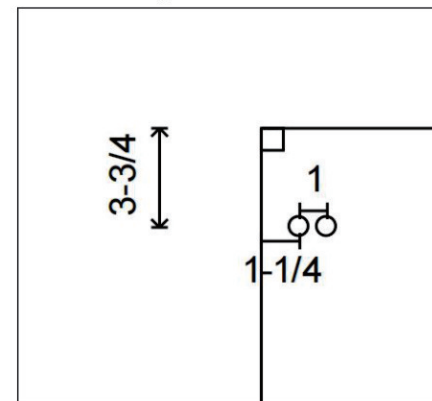
Technical Drawing - Sliding Door

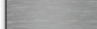





Technical Drawing - Fixed Panel



Technical Drawing - Fixed Panel



BR Brushed Nickel	CH Chrome	BL Matte Black	GO Brushed Gold
			

RADIANCE - STOCK SIZES

OPENING	48"x76"	54"x76"	60"x76"	66"x76"	72"x76"	60"x79"	60"x66"	60"x72"
WIDTH ADJUSTMENT	44"-48.5"	50"-54.5"	56"-60.5"	62"-66.5"	68"x72.5"	57"x60.5"	57"x60.5"	57"x60.5"
WALK-IN SIZE	18"-20"	20"-23"	23"-26"	25"-29"	28"-32"	23"-26"	23"-26"	23"-26"
DOOR SIZE	27 3/8"	30 3/8"	33 3/8"	36 3/8"	39 3/8"	33 3/8"	33 3/8"	33 3/8"
PANEL SIZE	23 3/8"	26 3/8"	29 3/8"	32 3/8"	35 3/8"	29 3/8"	29 3/8"	29 3/8"



fig. 1
single slider with towel bar
on the fixed panel.



fig. 2
single slider on a tub.



fig. 3
single slider with a return
panel.

SERENITY



Wall Mount & Tight Close.

Paired with a beautiful wall mount bracket with a stopper inside to prevent hard impact towards the wall, serving as a soft-holder to prevent the door from opening by itself as well.

Smooth Sliding.

3-5/8" width is required in order for this door to fit perfectly, where a guide bracket securing a "L threshold" will be placed, to guide the door from where to slide and a threshold to prevent water from flowing below.



Adjustable and Noiseless.

Built inside the rollers is a out-of-plumb adjustable system, where it can clear up to 3/8" of out of square on walls, ensuring that our system works with out of plumb showers. With precision cut bars we ensure there is no squeaking and easy to slide.

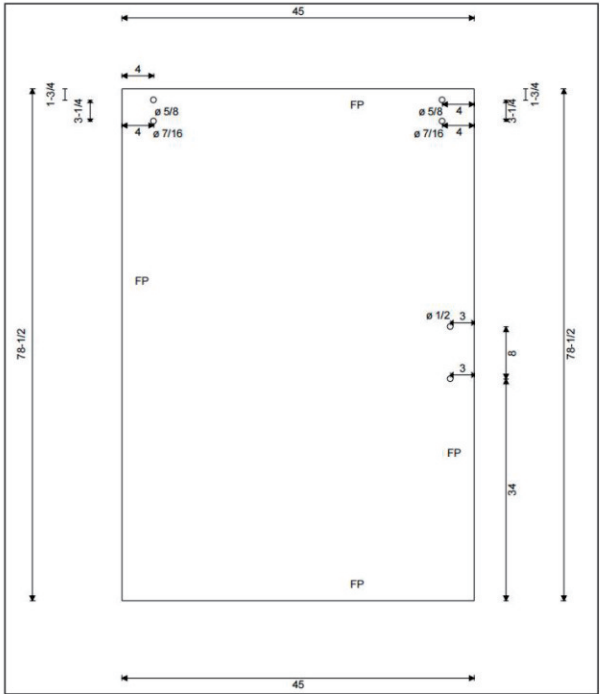
Handle

This door comes in multiple configurations and colors; You can choose between having a towel bar in the panel or not. In the which we have all in stock. Whichever one fits best in your setting.

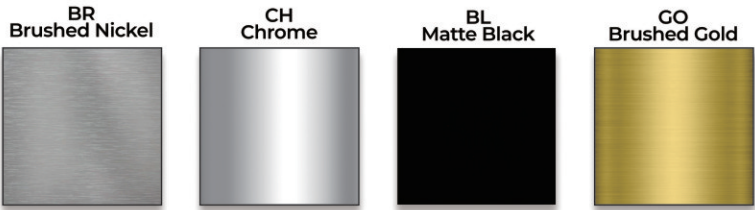
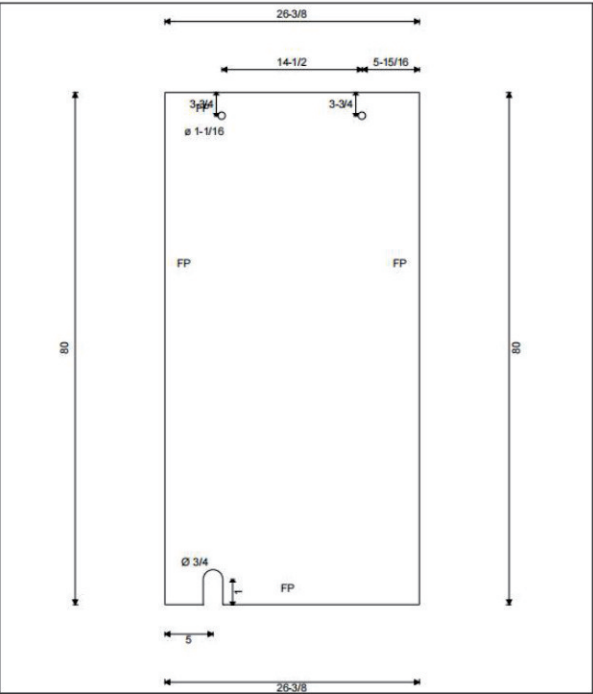


SERENITY - TECHNICAL DETAILS

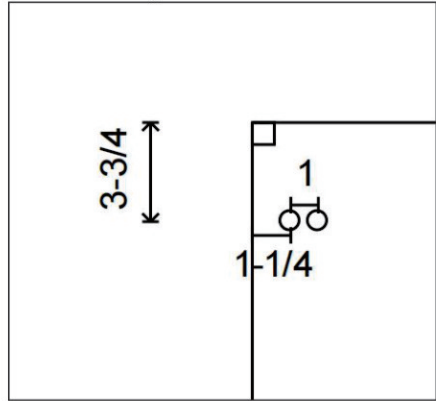
Technical Drawing - Sliding Door



Technical Drawing - Fixed Panel



Technical Drawing - Fixed Panel



SERENITY - STOCK SIZES

OPENING	48"x76"	54"x76"	60"x76"	66"x76"	72"x76"	60"x79"	60"x66"	60"x72"
WIDTH ADJUSTMENT	44"-48.5"	50"-54.5"	56"-60.5"	62"-66.5"	68"x72.5"	57"x60.5"	57"x60.5"	57"x60.5"
WALK-IN SIZE	18"-20"	20"-23"	23"-26"	25"-29"	28"-32"	23"-26"	23"-26"	23"-26"
DOOR SIZE	27 3/8"	30 3/8"	33 3/8"	36 3/8"	39 3/8"	33 3/8"	33 3/8"	33 3/8"
PANEL SIZE	23 3/8"	26 3/8"	29 3/8"	32 3/8"	35 3/8"	29 3/8"	29 3/8"	29 3/8"



fig. 1
standard fixed panel and door single slider.

NIRVANA



Wall Mounted Clamps

With secured and tight solid brass clips, rusting and durability is not a problem. Our hardware is top rated against rusting and highly durable.

Many Types of Hinges

We carry variations like short plate, H plate, offset plate, full plate and more! Depending on your requirements and preferences any plate / style can be selected!



Heavy Brass Handles

Handles can wear their color out if used for a long time, it may also break down, with our solid brass and UV coated finishes you can rest assured it's going to last.

Too Much to List!

Including hardware for any application, from glass to glass hinges ranging from 90-180 degrees; beveled and squared styles; clips from offset to glass to glass, adjustable hinges and towel bars. We got it all!



NIRVANA - PRESTINE Series

Light Duty Series



PRE90F
Full Plate



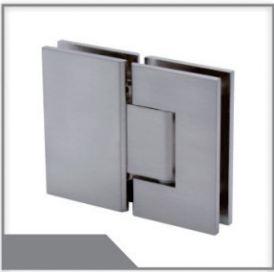
PRE90S
Short Plate



PRE90O
Offset Plate



PRE90F
H Plate



PRE180S
180 Deg



PRE092S
90 Deg



PRE135S
135 Deg



PRE135ADS
135 Deg Adjustable



PRE90FB
Full Plate



PRE90SB
Short Plate



PRE90OB
Offset Plate



PRE90HB
H Plate



PRE180B
180 Deg



PRE092B
90 Deg



PRE135B
135 Deg



PRE135ADB
135 Deg Adjustable

NIRVANA - ERCOLE Series

Heavy Duty Series



ERC90F
Full Plate



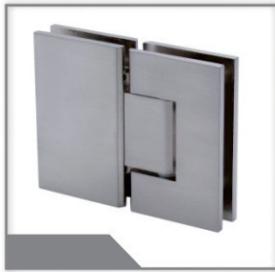
ERC90S
Short Plate



ERC90O
Offset Plate



ERC90F
H Plate



ERC180S
180 Deg



ERC092S
90 Deg



ERC135S
135 Deg



ERC135ADS
135 Deg Adjustable



ERC90FB
Full Plate



ERC90SB
Short Plate



ERC90OB
Offset Plate



ERC90HB
H Plate



ERC180B
180 Deg



ERC092B
90 Deg



ERC135B
135 Deg



ERC135ADB
135 Deg Adjustable

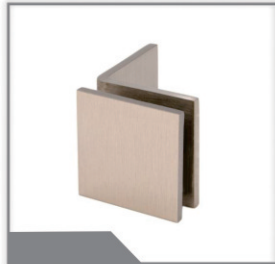
NIRVANA - Clamps & Clips



AZU4
Squared



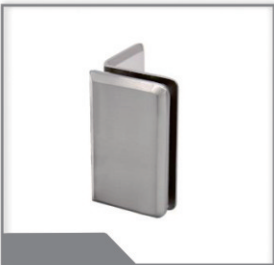
AZU5
Beveled



AZU9S
Offset Plate



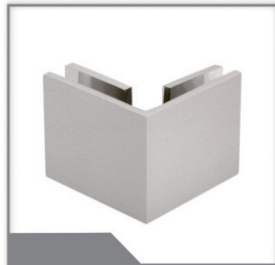
AZU9B
Offset Plate



AZU90B
Heavy Duty



AZU90S
Heavy Duty



AZU092S
90 Deg



AZU092B
90 Deg



AZ90S
90 Deg



AZ91S
Adjustable



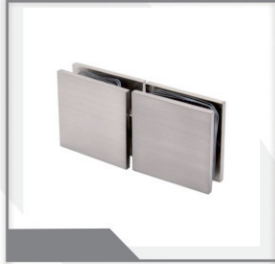
AZ98R
Offset Plate



AZ98L
Offset Plate



AZU180S
180 Deg



ATS180
180 Deg

NIRVANA - Handles & Towel Bars

Light Duty Series



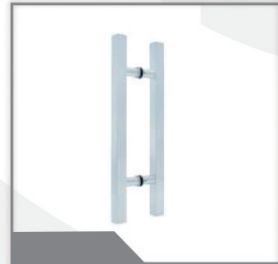
AM8X8R
Rounded



AM8X8S
Squared



AM8X8SR
Semi-Rounded



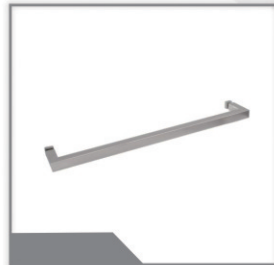
AM8X8LPR
Ladder Pull



AM8X18S
Squared



AM8X18R
Rounded



AM20S
Squared



AM20R
Rounded



AZFP
Finger Pull



AZFK
Finger Knob

SKU	Size	Style	Finish
AM8X18S	8" x 18"	Squared	4
AM8X18R	8" x 18"	Rounded	4
AM8X20S	8" x 20"	Squared	4
AM8X20R	8" x 20"	Rounded	4
AM8X24S	8" x 24"	Squared	4
AM8X24R	8" x 24"	Rounded	4

NIRVANA - Railings & Posts



AZRS01
Standard Spigot



AZRS02
Bevled Spigot



AZRS03
Fascia Mount



AZRS04
Offset Mount



AZRS06
Adjustable Clamp



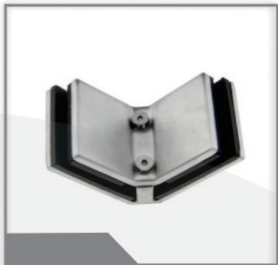
AZRS07
Wall Clamp



AZRS08
180 Deg Clamp



AZRS09
90 Deg Clamp



AZRS10
90 Deg Clamp



AZRG01
Singular Post



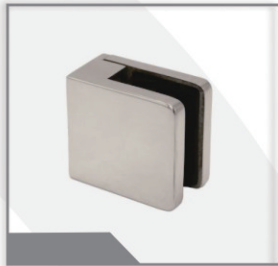
AZRG02
Singular Post



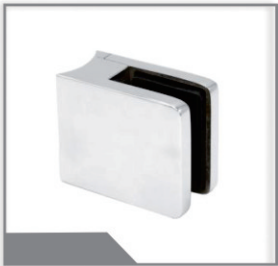
AZRG03
Post with Clamps



AZRG04
Post with Clamps



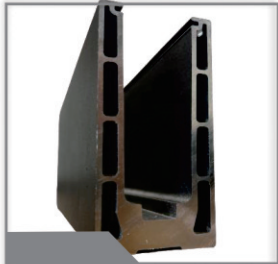
AZRG06
Clamp



AZRG07
Clamp



AZRB01
Channel



AZRB03
Channel



AZRB004
Plate



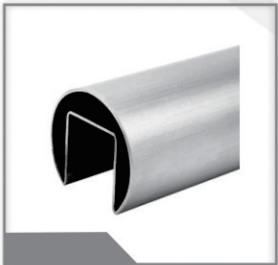
AZRB005
Disk



AMY04
Adjustable



AMY05
Standard



HR1032
Caprail



HR1033
Caprail



HR1042
Wall Mount



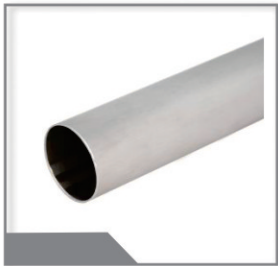
HR1043
Wall Mount



HR1040
Cover



HR1041
H Plate



JL2022
Handrail



JL2023
Wall Handrail



JL2024
Glass to Handrail



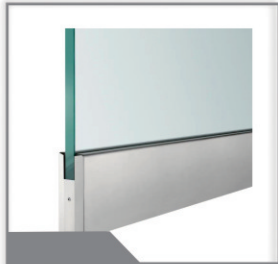
JL2025
Glass to Handrail Adjustable

NIRVANA - Commercial

Professional Grade



KW380HO
Hydraulic Bottom Patch



KWDR
Commercial Hydraulic Rail



KWPF2034
Top Patch



KWPF40
Patch



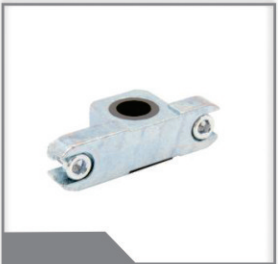
KWPF34
Patch



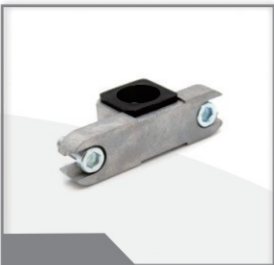
AM24X24LPF
Ladder



AM32X32LPF
Ladder



KWPF303
Patch Adapter



KWPF301
Patch Adapter



KWPF300
Patch Adapter



KWPF3010
Rail Adapter



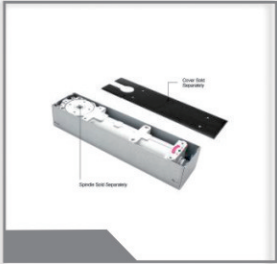
KWHB45SD
Single Door Header



KWHB45DD
Double Door Header



KW3010SA
Rail Adapter



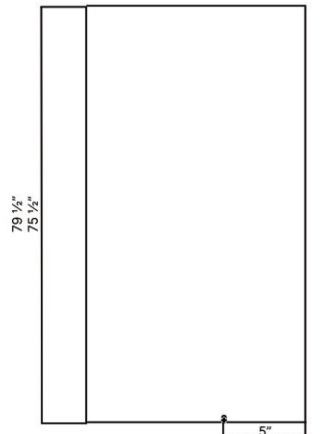
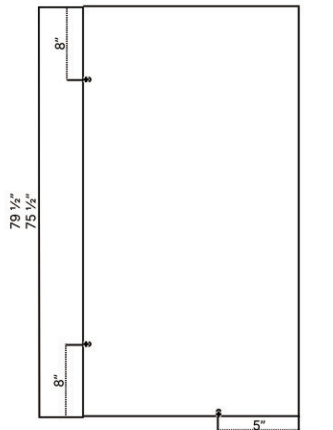
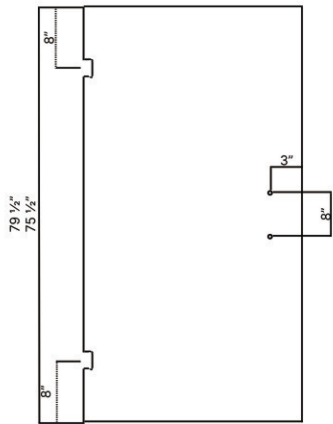
KWDC
Enclosed Bottom Closer



KWEC
Enclosed Top Closer

NIRVANA - STOCK GLASS

ALL IN STOCK! 3/8" Clear Tempered.



Increments of 1/4" and 1/8" on selected sizes.

H / W	24	24 1/4	24 1/2	...	29 1/4	29 1/2	29 3/4
75 1/2	✓	✓	✓	✓	✓	✓	✓
79 1/2	✓	✓	✓	✓	✓	✓	✓

Increments of 1" from 6 to 50 wide.

H / W	6	7	8	...	48	49	50
75 1/2	✓	✓	✓	✓	✓	✓	✓
79 1/2	✓	✓	✓	✓	✓	✓	✓

Increments of 1" from 6 to 24 wide.

H / W	6	7	8	...	22	23	24
75 1/2	✓	✓	✓	✓	✓	✓	✓
79 1/2	✓	✓	✓	✓	✓	✓	✓





Managed and built from start to finish by the guys in AZUPIN, we used offset commercial 1/4" gasket front aluminum extrusions for the support and framing of this office.

We turned which was once an empty space using 20+ desks as offices into an oasis of offices ready to be used as professional grade.

PASADENA OFFICE

This project showcases AZUPIN's commitment to quality craftsmanship and innovative solutions, transforming the space into a professional and welcoming environment.

Highlights of the Project:

- **Material Selection:** Offset commercial 1/4" gasket front aluminum extrusions were chosen for their strength, versatility, and clean finish, ensuring a professional and contemporary look.
- **Precision and Expertise:** The AZUPIN team meticulously handled each phase, from initial design and material selection to assembly and final installation, delivering a seamless result.
- **Functional and Aesthetic Balance:** The aluminum extrusions not only provide robust support but also enhance the office's overall aesthetic, creating a workspace that is both practical and visually appealing.
- **Custom Solutions:** Tailored to the specific requirements of the space, the framing was customized for perfect integration with the office layout.



Over 12+ of partitions and offices done here.





Managed and built from start to finish by the guys in AZUPIN, we used offset commercial 1/2" u channel for the support and framing of this office.

We converted the empty newly built space into something beautiful, something a new.

DIAMOND BAR OFFICE

This project showcases AZUPIN's commitment to quality craftsmanship and innovative solutions, transforming the space into a professional and welcoming environment.

Highlights of the Project:

- **Material Selection:** Offset commercial 1/2" commercial u channels were chosen for their strength, versatility, and clean finish, ensuring a professional and contemporary look.
- **Precision and Expertise:** The AZUPIN team meticulously handled each phase, from initial design and material selection to assembly and final installation, delivering a seamless result.
- **Functional and Aesthetic Balance:** The aluminum extrusions not only provide robust support but also enhance the office's overall aesthetic, creating a workspace that is both practical and visually appealing.
- **Custom Solutions:** Tailored to the specific requirements of the space, the framing was customized for perfect integration with the office layout.





Managed and built from start to finish by the guys in AZUPIN, we used offset commercial 1/2" u channel for the support and framing of this office.

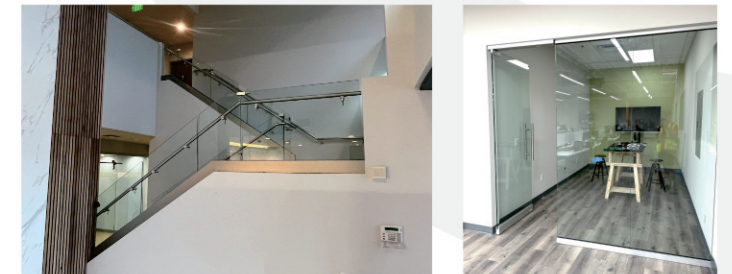
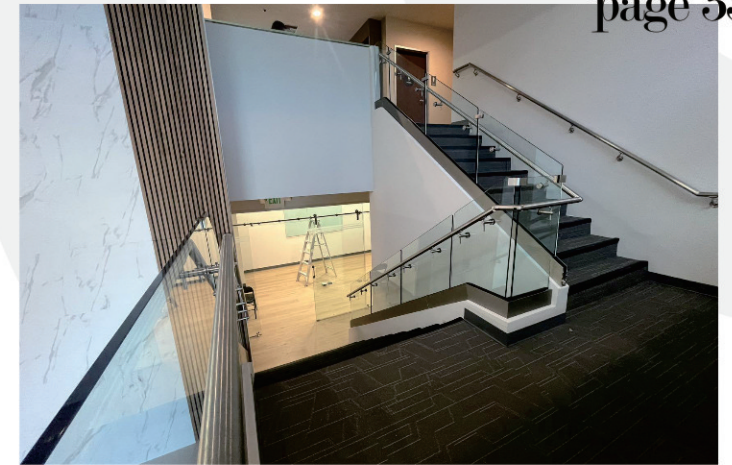
We converted the empty newly built space into something beautiful, something a new.

POMONA OFFICE

This project showcases AZUPIN's commitment to quality craftsmanship and innovative solutions, transforming the space into a professional and welcoming environment.

Highlights of the Project:

- **Material Selection:** Offset commercial 1/2" commercial u channels were chosen for their strength, versatility, and clean finish, ensuring a professional and contemporary look.
- **Precision and Expertise:** The AZUPIN team meticulously handled each phase, from initial design and material selection to assembly and final installation, delivering a seamless result.
- **Functional and Aesthetic Balance:** The aluminum extrusions not only provide robust support but also enhance the office's overall aesthetic, creating a workspace that is both practical and visually appealing.
- **Custom Solutions:** Tailored to the specific requirements of the space, the framing was customized for perfect integration with the office layout.



Over 10 of partitions and offices done here.



INSPIRATION - Design

Commercial Application



INSPIRATION - Design

Corner Sliders



INSPIRATION - Design

Single Sliders



INSPIRATION - Design

Double Sliders



INSPIRATION - Design

Large Single Sliders



INSPIRATION - Design

Extra Large Shower



INSPIRATION - Design

Fixed Panel



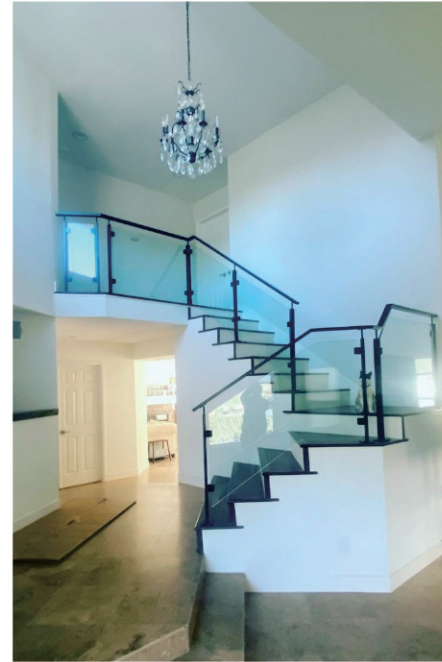
INSPIRATION - Design

Extra Large Shower

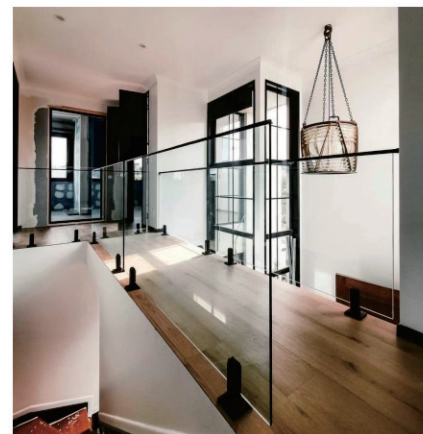
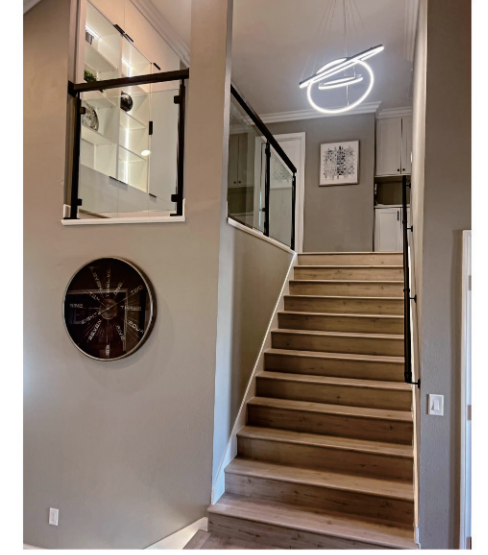


INSPIRATION - Design

Glass Railing



Glass Railing



INSPIRATION - Design

Mirrors



INSPIRATION - Design

Miscs

