



# 2025 Catalog

# AZUPIN

Glass & Hardware





# Introduction



AZUPIN manufacture and supply luxurious glass shower doors to the Glaziers and Homeowners around United States. Our products are listed on retail stores such as: **Wayfair, HomeDepot, Lowe's and many more!** We provide a wide range of sliding shower doors, glass and a variety of hardware for your every need.

We work closely with our glaziers to provide them to ensure our products meet expectations or even, exceed.

FOUNDED FEB. 2021



With us, you won't have to worry about scratched glass as we have beautiful packaging, unsafe corners, as we have protective plastic edges and dirtiness, as we take care of our glass and hardware.

"glazing isn't just glass, it's art." - kobi

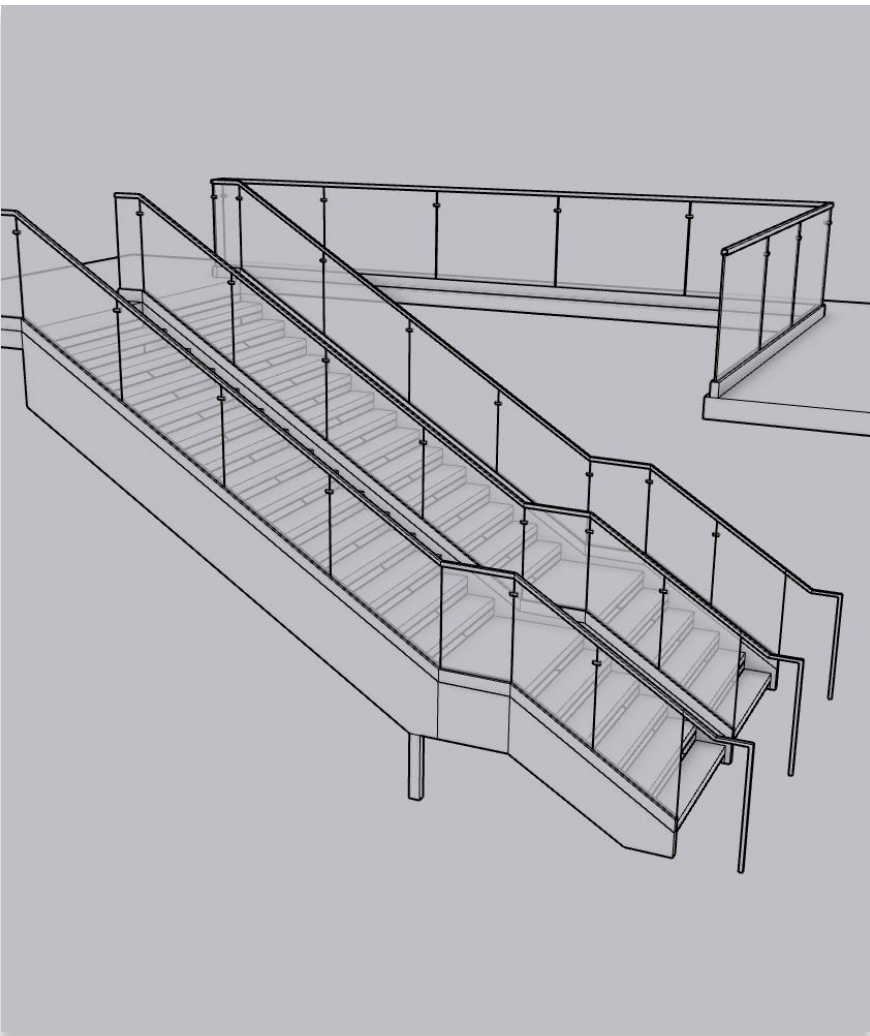


# Introduction

We aim to give clients and homeowners a choice. A result before the result. The perfect vision. Our goal is to provide our customers with high-quality and visually appealing glass showers and railings to meet their specific needs and enhance the overall aesthetic of their projects.

We focus on **designing, manufacturing and installing**. We reach the best result in price, quality and design to match YOUR specific need.

## SOME OF OUR HIGHLIGHTS





# KBIS 2025



Join us in our booth at #SL2152 and explore our wide variety of glass and hardware. Including commercial & residential components, ranging from **railings, showers, partitions, doors, aluminum, extrusions and more.**



KBIS is a trade show that showcases the latest products, trends, and technologies for kitchen and bath design. It is the largest trade show in North America for the kitchen and bath industry. KBIS is owned by the National Kitchen & Bath Association (NKBA) and is co-located with the International Builders' Show (IBS) in Las Vegas, Nevada.





# Now Online!

You can now purchase our products online via HomeDepot, Wayfair and many other sites, just look us up and you'll find it! We have various brand names such as:

- AZUPIN
- KOBİWORKS



Kobiworks

Catalyst 48 in. W x 76 in. H Double Sliding Frameless Shower Door in Brushed Nickel with 3/8 in. Clear Glass

★★★★★ (3) Questions & Answers (18)



# Catalyst Series

Frameless Double Sliding Shower Door

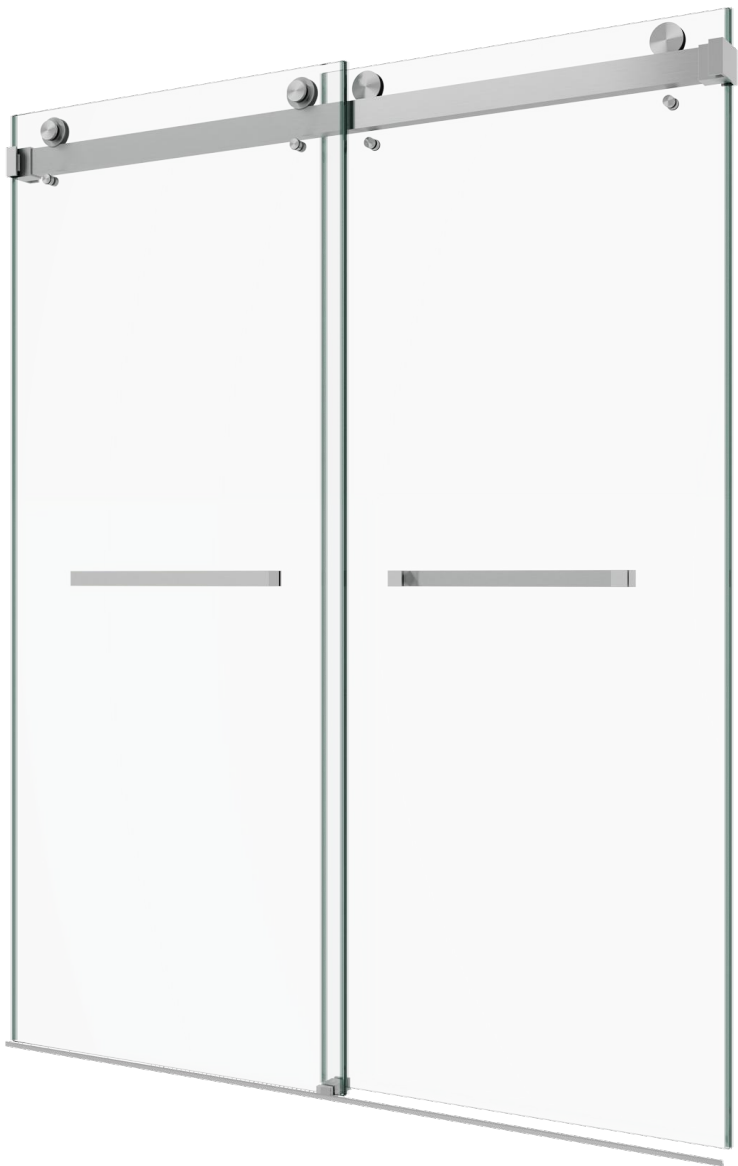




# Catalyst

## Frameless Double Sliding Shower Door

- 3/8" Tempered Glass
- Frameless Spacious Feel
- For Use in Residential Bath and Commercial Hotel Applications
- Anti-Jump System
- Towel Bars and/or Finger Pulls
- Silent Smooth Rollers
- High Quality 304 Stainless Steel



10  
YEAR  
WARRANTY

### Available Finishes



BR  
BRUSHED  
NICKEL



CH  
POLISHED  
CHROME



BL  
MATTE  
BLACK



GO  
BRUSHED  
GOLD

### 304 Stainless Steel Components.



No. PSDSW76  
Wide Plastic Strip and  
Stopper



No. PSDSS76  
Plastic Strip Door  
Stopper



No. RS01  
Rubber Door Stopper



No. SBHW01  
Side Bracket Holder



No. SBHB01  
Side Bracket Bar  
Holder



No. HB01  
Header Bar

Additional Drilling  
Template Included!  
For Easy Installation



No. AZTB20  
19 3/4" Towel Bar

SWAPPABLE



No. AZFP1  
1 3/4" Finger Pull



No. BG01  
Door Guide



No. TSH01  
Threshold



No. AJS01  
Anti-Jumper



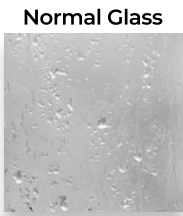
No. BR01  
Roller



### SIZES AVAILABLE FOR CLEAR GLASS, PATTERN GLASS AVAILABLE TOO!:

| OPENING             | 48"x76" | 54"x76" | 60"x76" | 66"x76" | 72"x76" | 60"x79" | 60"x66" | 60"x72" |
|---------------------|---------|---------|---------|---------|---------|---------|---------|---------|
| WIDTH<br>ADJUSTMENT | 44"-49" | 50"-55" | 56"-61" | 62"-67" | 68"x73" | 56"x61" | 56"x61" | 56"x61" |
| WALK-IN<br>SIZE     | 18"-22" | 21"-25" | 24"-28" | 27"-31" | 30"-34" | 24"-28" | 24"-28" | 24"-28" |
| DOOR SIZE           | 25 1/4" | 28 1/4" | 31 1/4" | 34 1/4" | 37 1/4" | 31 1/4" | 31 1/4" | 31 1/4" |

Our glass is pre-coated  
with **EnduroShield** on  
both sides!





# Radiance Series

Frameless Single Sliding Shower Door





# Radiance

Frameless Single Sliding Shower Door

- 3/8" Tempered Glass
- Frameless Spacious Feel
- For Use in Residential Bath and Commercial Hotel Applications
- Anti-Jump System
- Ladder Handle
- Silent Smooth Rollers
- High Quality 304 Stainless Steel

### Available Finishes



BR  
BRUSHED  
NICKEL



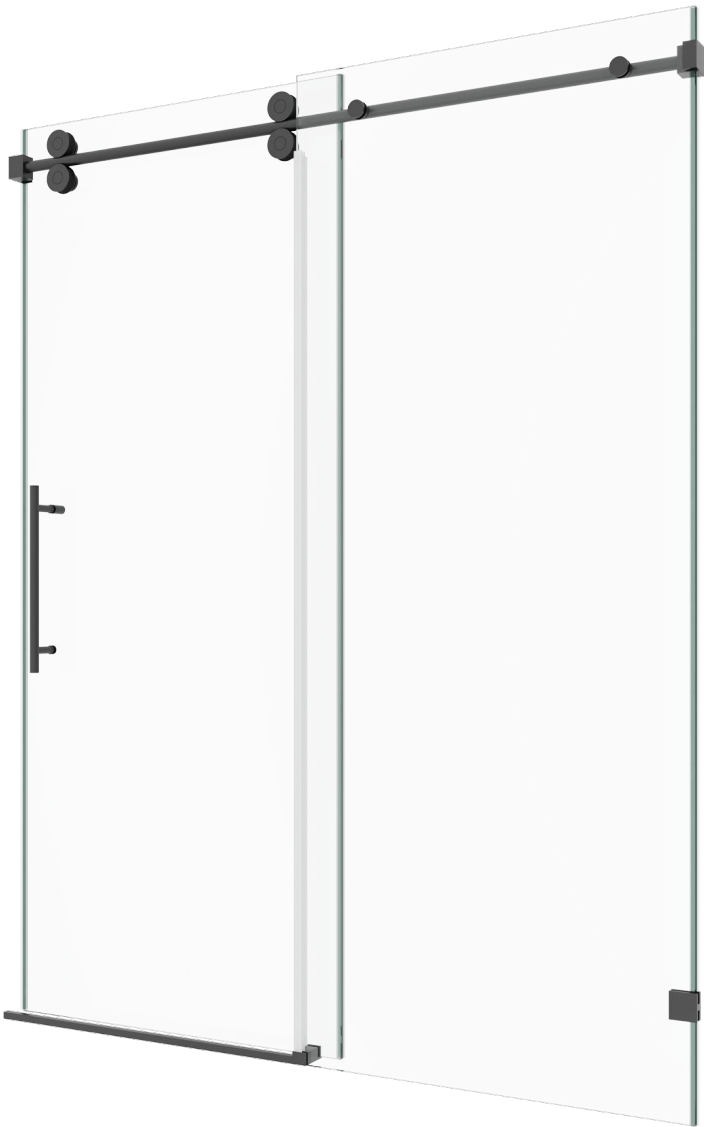
CH  
POLISHED  
CHROME



BL  
MATTE  
BLACK



GO  
BRUSHED  
GOLD



10  
YEAR  
WARRANTY

### 304 Stainless Steel Components.



No. PSDSW76  
Wide Plastic Strip for  
Fixed Panel



No. PSDSS76  
Plastic Strip Door  
Stopper



No. RS04  
Rubber Door Stopper



No. SBHB04  
Side Bracket Bar  
Holder



No. HB04  
Header Bar



Additional Drilling  
Template Included!  
For Easy Installation



No. AZHD04  
Handle Knob



No. FPC04  
Fixed Panel  
Clamp



No. BG04  
Door Guide



No. TSH04  
Threshold



No. SPB04  
Side Panel  
Bracket



No. BR04  
Roller

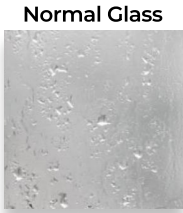
### SIZES AVAILABLE FOR CLEAR GLASS, PATTERN GLASS AVAILABLE TOO!:

| OPENING             | 48"x76"   | 54"x76"   | 60"x76"   | 66"x76"   | 72"x76"   | 60"x79"   | 60"x66"   | 60"x72"   |
|---------------------|-----------|-----------|-----------|-----------|-----------|-----------|-----------|-----------|
| WIDTH<br>ADJUSTMENT | 44"-48.5" | 50"-54.5" | 56"-60.5" | 62"-66.5" | 68"x72.5" | 57"x60.5" | 57"x60.5" | 57"x60.5" |
| WALK-IN<br>SIZE     | 18"-20"   | 20"-23"   | 23"-26"   | 25"-29"   | 28"-32"   | 23"-26"   | 23"-26"   | 23"-26"   |
| DOOR SIZE           | 27 3/8"   | 30 3/8"   | 33 3/8"   | 36 3/8"   | 39 3/8"   | 33 3/8"   | 33 3/8"   | 33 3/8"   |
| PANEL SIZE          | 23 3/8"   | 26 3/8"   | 29 3/8"   | 32 3/8"   | 35 3/8"   | 29 3/8"   | 29 3/8"   | 29 3/8"   |

Our glass is pre-coated  
with **EnduroShield** on  
both sides!



Easy Cleaning



Normal Glass



# Serenity Series

Frameless Single Sliding Shower Door





# Serenity

Frameless Single Sliding Shower Door

- 3/8" Tempered Glass
- Frameless Spacious Feel
- For Use in Residential Bath and Commercial Hotel Applications
- Anti-Jump System
- Squared Style
- Silent Smooth Rollers
- High Quality 304 Stainless Steel

## Available Finishes



BR  
BRUSHED  
NICKEL



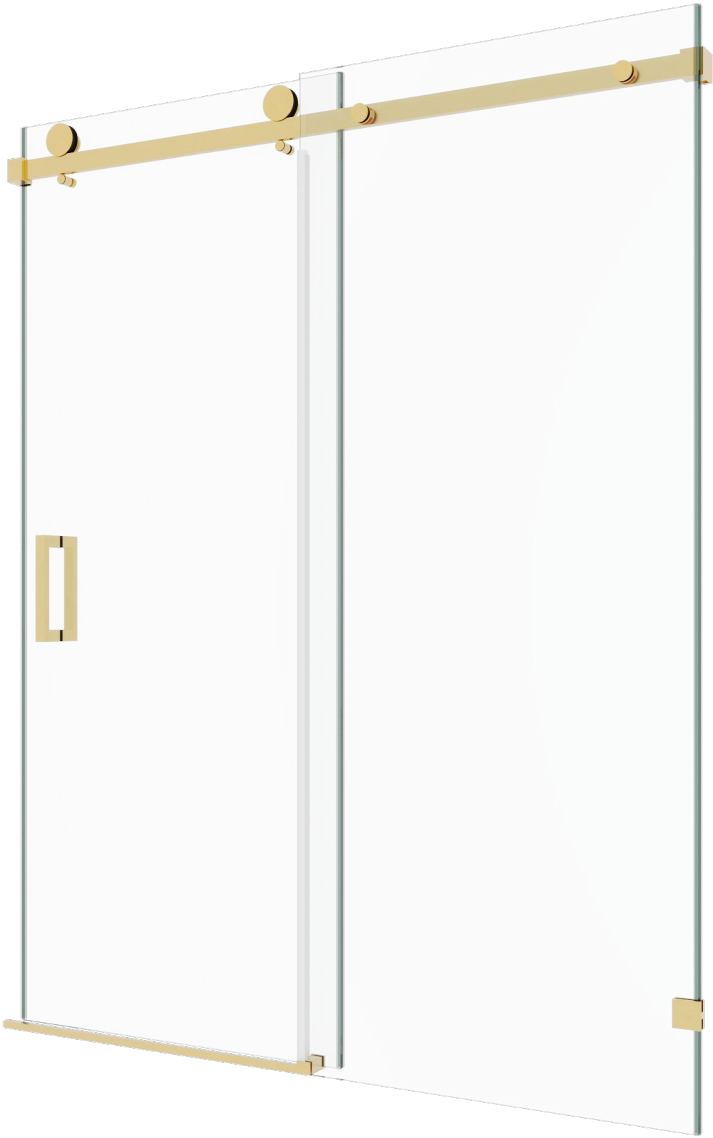
CH  
POLISHED  
CHROME



BL  
MATTE  
BLACK



GO  
BRUSHED  
GOLD



10  
YEAR  
WARRANTY

## 304 Stainless Steel Components.



No. PSDSW76  
Wide Plastic Strip for  
Fixed Panel



No. PSDSS76  
Plastic Strip Door  
Stopper



No. RS05  
Rubber Door Stopper



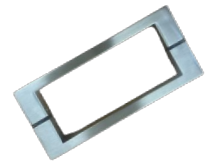
No. SBHB05  
Side Bracket Bar  
Holder



No. HB05  
Header Bar



Additional Drilling  
Template Included!  
For Easy Installation



No. AZHD04  
Square Handle



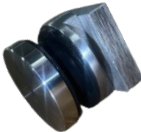
No. FPC05  
Fixed Panel  
Clamp



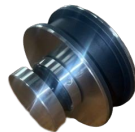
Rubber Door Stopper  
No. BG05  
Door  
Guide



No. TSH05  
Threshold



No. SPB05  
Side Panel  
Bracket



No. BR05  
Roller

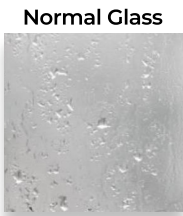
## SIZES AVAILABLE FOR CLEAR GLASS, PATTERN GLASS AVAILABLE TOO!:

| OPENING             | 48"x76"   | 54"x76"   | 60"x76"   | 66"x76"   | 72"x76"   | 60"x79"   | 60"x66"   | 60"x72"   |
|---------------------|-----------|-----------|-----------|-----------|-----------|-----------|-----------|-----------|
| WIDTH<br>ADJUSTMENT | 44"-48.5" | 50"-54.5" | 56"-60.5" | 62"-66.5" | 68"x72.5" | 57"x60.5" | 57"x60.5" | 57"x60.5" |
| WALK-IN<br>SIZE     | 18"-20"   | 20"-23"   | 23"-26"   | 25"-29"   | 28"-32"   | 23"-26"   | 23"-26"   | 23"-26"   |
| DOOR SIZE           | 27 3/8"   | 30 3/8"   | 33 3/8"   | 36 3/8"   | 39 3/8"   | 33 3/8"   | 33 3/8"   | 33 3/8"   |
| PANEL SIZE          | 23 3/8"   | 26 3/8"   | 29 3/8"   | 32 3/8"   | 35 3/8"   | 29 3/8"   | 29 3/8"   | 29 3/8"   |

Our glass is pre-coated  
with **EnduroShield** on  
both sides!



Easy Cleaning



Normal Glass

# Fusion Series

Framed Double Sliding Shower Door





# Fusion

## Framed Double Sliding Shower Door

- 5/16" Tempered Glass
- Framed Look
- For Use in Residential Bath and Commercial Hotel Applications
- Silent Smooth Rollers
- Cost Effective
- Easy to Install

### Available Finishes



**BR**  
BRUSHED  
NICKEL



**CH**  
POLISHED  
CHROME



**BL**  
MATTE  
BLACK



**10**  
YEAR  
WARRANTY

The Fusion Frameless Single Sliding Shower Door is a modern and elegant shower enclosure designed to enhance the look of any bathroom. The shower door features a frameless design, which gives it a sleek and seamless appearance, and allows for easy cleaning and maintenance. The door is made of tempered glass, which is highly durable and resistant to breakage, making it a safe option for any bathroom.

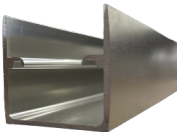
### 304 Stainless Steel Components.



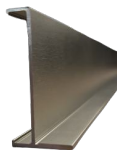
**No. FR06**  
Roller



**No. RS06**  
Rubber Door  
Stopper



**No. HF06**  
Header Frame



**No. BF06**  
Bottom Frame



Additional Drilling  
Template Included!  
For Easy Installation



**No. AZHD06**  
Towel Bar



**No. BG06**  
Door  
Guide



**No. SF06**  
Side Frame

#### SIZES AVAILABLE FOR GLASS:

| OPENING             | 60"x60" | 60"x66" | 60"x75" |
|---------------------|---------|---------|---------|
| WIDTH<br>ADJUSTMENT | 56"x61" | 56"x61" | 56"x61" |
| WALK-IN<br>SIZE     | 18"-22" | 18"-22" | 18"-22" |
| DOOR SIZE           | 31 1/4" | 31 1/4" | 31 1/4" |



# Catalyst-Plus Series

Frameless Double Sliding Shower Door  
with Soft-Closing



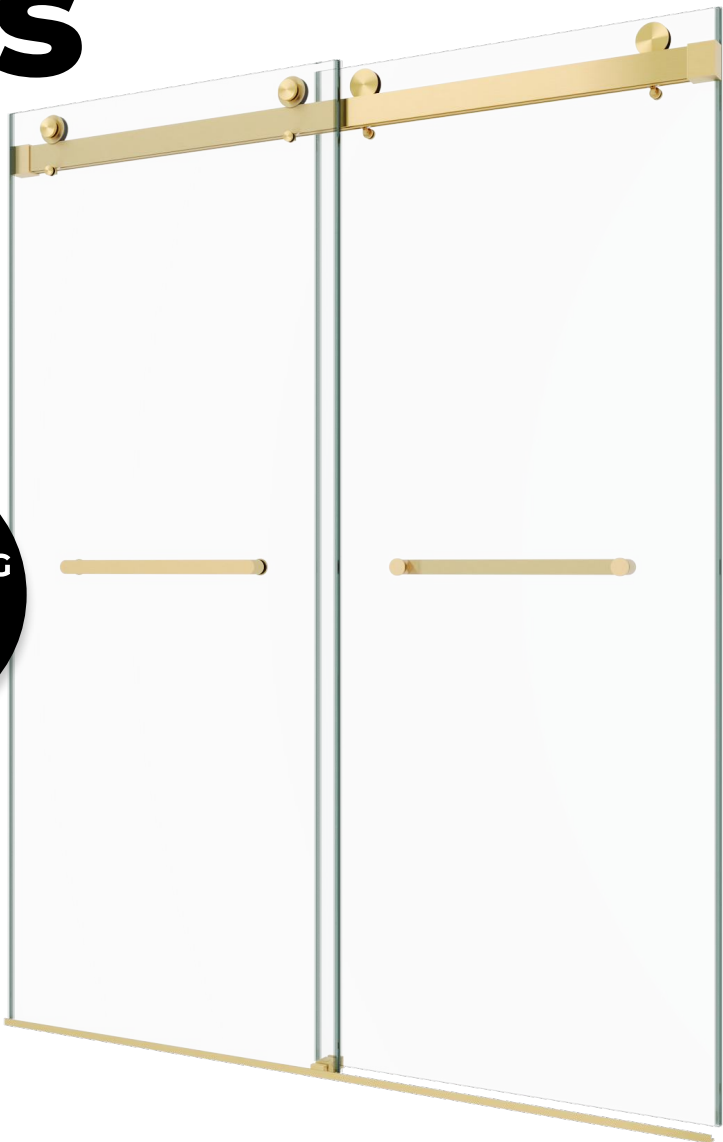


# Catalyst-Plus

Frameless Double Sliding Shower Door with Soft-Closing

- 3/8" Tempered Glass
- Frameless Spacious Feel
- For Use in Residential Bath and Commercial Hotel Applications
- Anti-Jump System
- Soft-Closing Mechanism
- Silent Smooth Rollers
- High Quality 304 Stainless Steel

SOFT-CLOSING MECHANISM INSIDE!



10  
YEAR  
WARRANTY

## Available Finishes



BR  
BRUSHED  
NICKEL



CH  
POLISHED  
CHROME



BL  
MATTE  
BLACK



GO  
BRUSHED  
GOLD

The Catalyst Plus Frameless Single Sliding Shower Door is a modern and elegant shower enclosure designed to enhance the look of any bathroom. The shower door features a frameless design, which gives it a sleek and seamless appearance, and allows for easy cleaning and maintenance. The door is made of tempered glass, which is highly durable and resistant to breakage, making it a safe option for any bathroom. With a Soft-Closing Mechanism to ease the sliding process.

## 304 Stainless Steel Components.



No. PSDSW76  
Wide Plastic Strip for  
Fixed Panel



No. PSDSS76  
Plastic Strip Door  
Stopper



No. SBHB05  
Side Bracket Bar  
Holder



No. HB13  
Header Bar



No. AJ13  
Anti  
Jumper



Additional Drilling  
Template Included!  
For Easy Installation



No. AZHD13  
Towel Bar



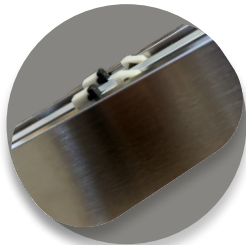
No. BG13  
Door  
Guide



No. TSH13  
Threshold



No. BR13  
Roller

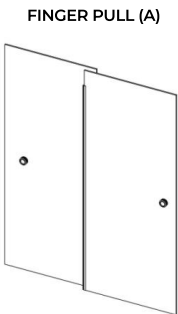
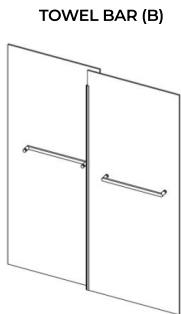
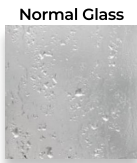


Hydraulic Press  
Integrated in the  
Header!

### SIZES AVAILABLE FOR GLASS:

| OPENING             | 48"x76" | 54"x76" | 60"x76" | 66"x76" | 72"x76" | 60"x79" | 60"x66" | 60"x72" |
|---------------------|---------|---------|---------|---------|---------|---------|---------|---------|
| WIDTH<br>ADJUSTMENT | 44"-49" | 50"-55" | 56"-61" | 62"-67" | 68"x73" | 56"x61" | 56"x61" | 56"x61" |
| WALK-IN<br>SIZE     | 18"-22" | 21"-25" | 24"-28" | 27"-31" | 30"-34" | 24"-28" | 24"-28" | 24"-28" |
| DOOR SIZE           | 25 1/4" | 28 1/4" | 31 1/4" | 34 1/4" | 37 1/4" | 31 1/4" | 31 1/4" | 31 1/4" |

Some of Our Specific  
Models are already  
coated with  
**EnduroShield!**





# Nirvana Series

Frameless Hinged Shower Doors





# Nirvana

Frameless Hinged Shower Doors

10  
YEAR  
WARRANTY

- 3/8" Tempered Glass
- Frameless Spacious Feel
- For Use in Residential Bath and Commercial Hotel Applications
- Hinged Door with Square or Bevel Style.
- Auto-Centering Hinges
- Adjustable and Swing movements
- High Quality 304 Stainless Steel



### Available Finishes



**BR**  
BRUSHED  
NICKEL



**CH**  
POLISHED  
CHROME



**BL**  
MATTE  
BLACK



**GO**  
BRUSHED  
GOLD

A swing shower door is a popular option for many homeowners who want a functional and aesthetically pleasing shower door. This type of door swings open on a hinge, providing easy accessibility and mobility in and out of the shower. It is particularly beneficial for people with limited mobility or for those who want a more spacious showering experience, as it eliminates the need to step over a high threshold. Additionally, swing shower doors take up less space than sliding doors since they only require clearance on one side of the shower, making them a great choice for smaller bathrooms or tight spaces. With a variety of designs and styles available, swing shower doors can also add a sleek and modern look to any bathroom decor. Overall, a swing shower door is a functional, space-saving, and aesthetically pleasing option for homeowners looking to upgrade their bathroom.

### 304 Stainless Steel Components.



**No. PSDSW76**  
Wide Plastic Strip for  
Fixed Panel



**No. PSDSS76**  
Plastic Strip Door  
Stopper



**No. PSDSB76**  
Plastic Strip for  
Bottom of the Door



**No. PRE90H**  
Light Duty Hinge

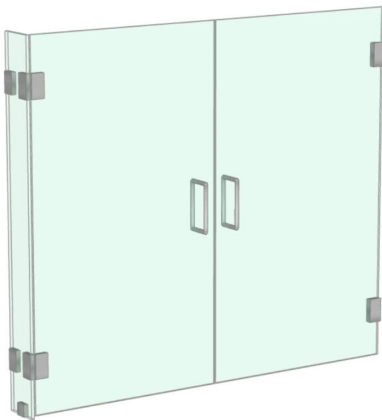


**No. AZU4**  
Fixed Panel  
Clamp

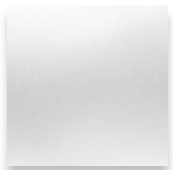


**No. AM8X8SR**  
Door  
Handle

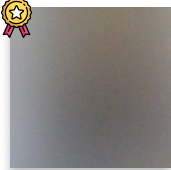
Where your vision comes to life.



### Glass Types



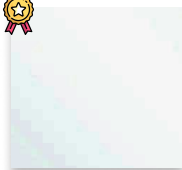
**FR**  
Frosted Glass



**AE**  
Acid Etched  
Glass



**UC**  
Ultra-Clear  
Glass



**CL**  
Clear Glass



**RN**  
Rain Glass

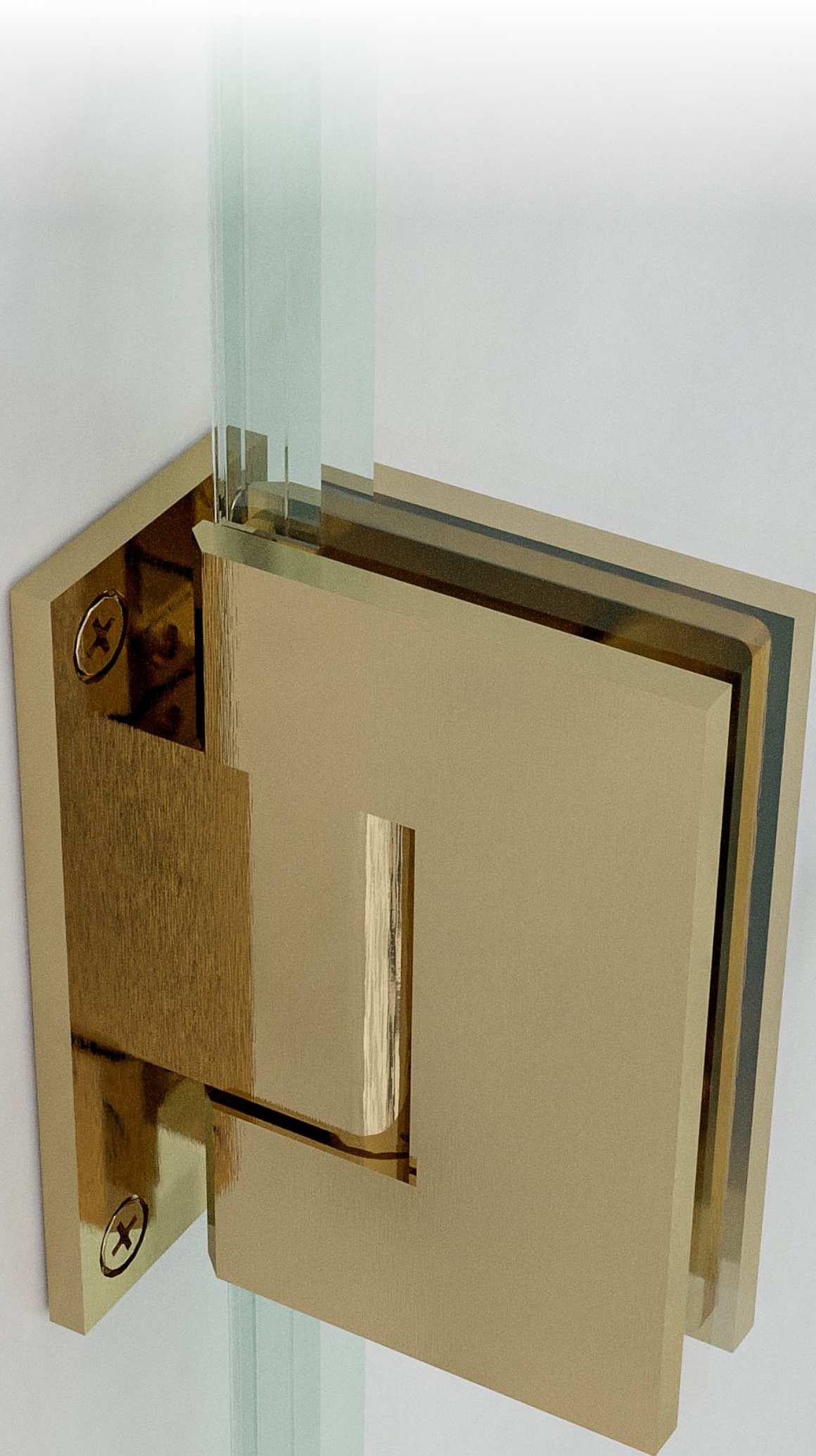
Different Styles and Colors are available. More in the next few pages.  
Square, Beveled, Round, Squared and a lot more options





# AZUPIN Hardware

Frameless Hardware





# NIRVANA GLASS CLAMPS

Glass clamps are secure fasteners used to hold and support glass panels in railings, partitions, and other structures. Typically made of metal, they ensure stability and safety while allowing for clean and transparent designs.

## Fixed Panel Clamps



No. AZU4S



No. AZU4B



No. AZU90B



No. AZU90S



No. AZU9S



No. AZU9B

## Slip Clamps



No. AZ89L



No. AZ89R



No. AZ90



No. AZ14

## Glass to Glass Clamps



No. AZ092S



No. AZ092B



No. AZU180S



No. AZU180B

## Transom Clamps



No. ATS180B



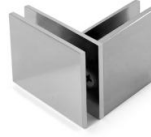
No. ATS180S



No. ATS90S



No. ATS90B



No. ATS092S



No. ATS092B

# NIRVANA HANDLE & BARS

Handles are fixtures for opening doors and drawers, while towel bars hang towels in bathrooms. In some shower enclosures, a combined design exists, serving as both a door handle and towel hanger, offering a space-saving, sleek solution usually crafted from durable materials like stainless steel or chrome.

## Back-To-Back Handles



## Towel Bar & Handle Combo



## One Sided Towel Bar



## One Sided Hooks & Knobs





# NIRVANA GLASS HINGES

Glass hinges are specialized hardware pieces used to attach and allow movement of glass doors or panels. Typically made of metal or a combination of metal and plastic, they're designed to hold the weight of the glass securely. Used in shower enclosures, cabinets, and modern interior designs, they offer a seamless and elegant look while ensuring functionality.

## PRESTINE Light Duty Hinges



No. PRE90SH



No. PRE90SS



No. PRE90SO



No. PRE90BO



No. PRE90BS



No. PRE90BH



No. PRE180S



No. PRE180B



No. PRE135B



No. PRE135S



No. PRE092S



No. PRE092B

## ERCOLE Heavy Duty Hinges



No. ERC90SH



No. ERC90SS



No. ERC90SO



No. ERC90BO



No. ERC90BS



No. ERC90BH



No. ERC180S



No. ERC180B



No. ERC135B



No. ERC135S



No. ERC092S



No. ERC092B

## JESSICA Pivot Hinges



No. JSC01S



No. JSC08S



No. JSC07S

# NIRVANA HEADER & CHANNELS

Glass header bars, sliders, and pivots are integral to frameless glass door systems. Header bars provide top support and often anchor sliding or pivoting mechanisms. Sliders enable doors to glide smoothly along tracks, while pivots act as hinge points for swinging motions. Together, they ensure the seamless and efficient functioning of modern glass installations.

## AZUPIN Header Bars



No. KOB196-HB



No. KOB1144-HB



No. KOB1W



No. KOB1ADJ



No. SSC01

## AZUPIN Slider Bars



No. HB04



No. HB05



No. HB01

## AZUPIN U Channels



KOB1144-CH01



KOB196-CH01

3/8"



KOB196-CH02



KOB1144-CH02

1/2"



No. KOB1033



# NIRVANA RAILINGS

Glass railings are transparent barriers used in modern designs, offering safety without blocking views. Commonly found on balconies and staircases, they use tempered or laminated glass for strength and safety.

## SILVER Spigot



No. AZRS01



No. AZRS02



No. AZRS03



No. AZRS04



No. AZRS05

## SILVER Clamps



No. AZRS06



No. AZRS07



No. AZRS08



No. AZRS09



No. AZRS10



No. AZRS11

## GOLD Posts



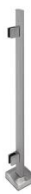
No. AZRS01



No. AZRS02



No. AZRS03



No. AZRS04

## GOLD Clamps



No. AZRG06



No. AZRG07



No. AZRG08



No. AZRG09



**BLACK** Base Shoes



No. AZRB01



No. AZRB003



No. AZRB004



No. AZRB4



No. AZRB005

**AMETHYST** Standoffs



No. AMY04



No. AMY05



No. AMY09

**AZUPIN** Cap Rails



No. HR1032



No. HR1033



No. HR1042



No. HR1043



No. HR1040



No. HR1041



No. HR1036



No. HR1033



No. HR1038



No. HR1039



No. JL2022



No. JL2023



No. JL2024



# NIRVANA COMMERCIAL

Commercial components that are used in professional environments, handle more load than the average glass and entrance.

## Main Components



No. KW380HO



No. KW380HO



No. KWPF2034



No. KWPF40



No. KWPF34

## Commercial Handles



No. AM24X24LPR



No. AM32X32LPR

## Standard Components



No. KWPF303



No. KWPF301



No. KWPF300



No. KWPF3010

## Header Components



No. KWHB45SD



No. KWHB45DD



No. KW3010SA



No. KWDC



No. KWEC

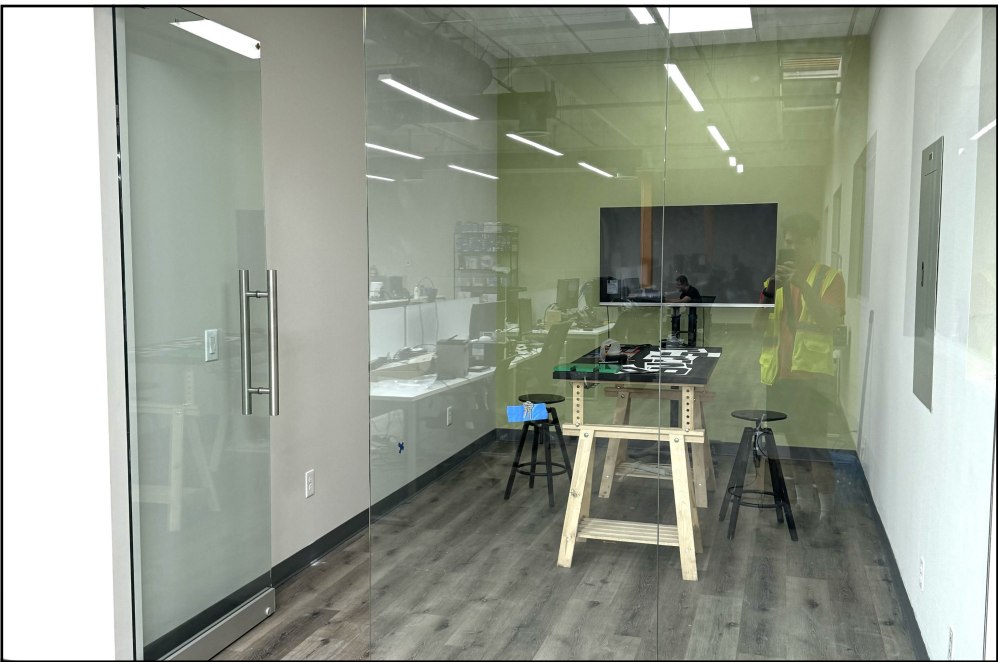


# Total Benevolence

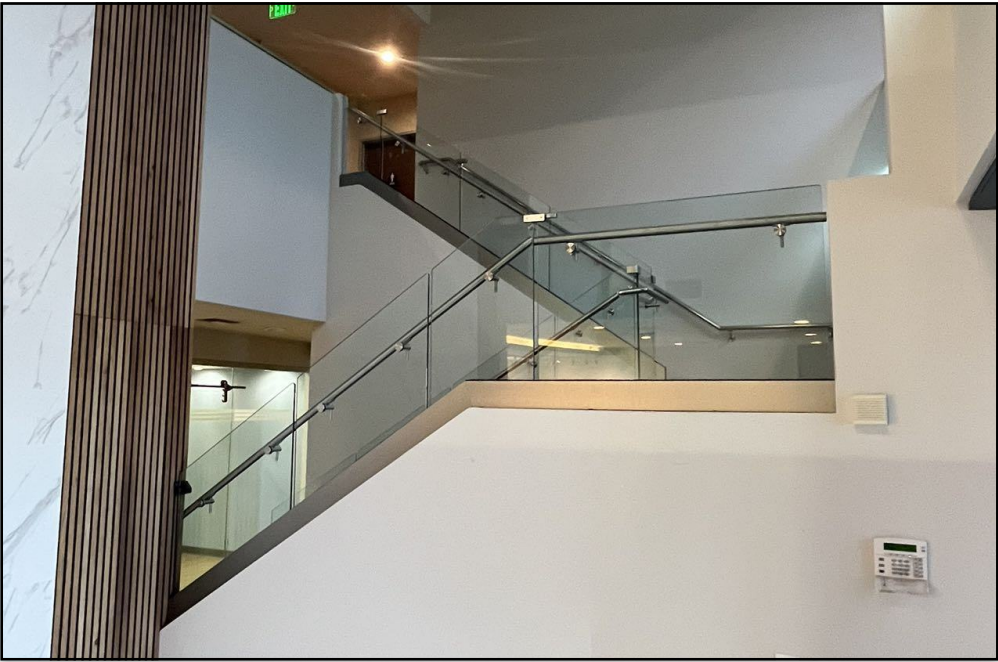
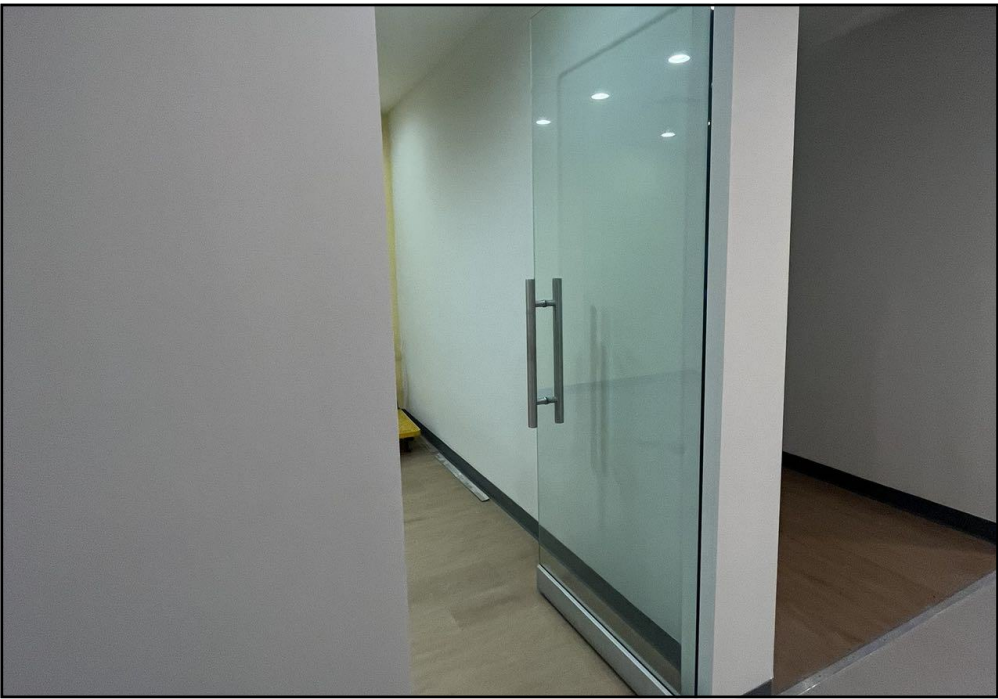
Pomona, California



Lead time: 3 weeks.  
Glass usage: 1,543.41 sqr. ft.  
Openings: 18









# Office Space

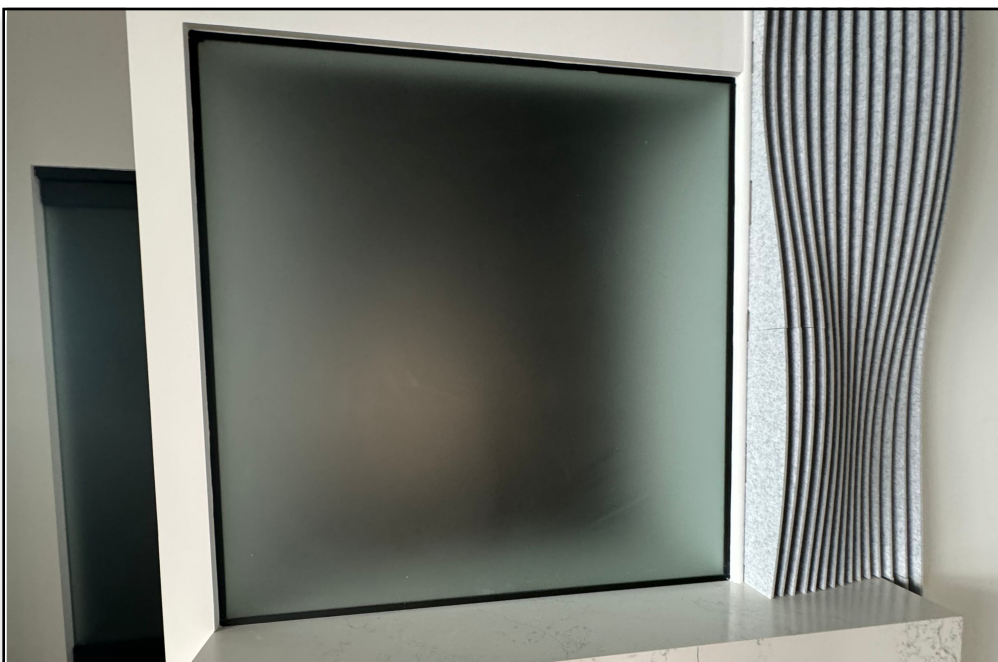
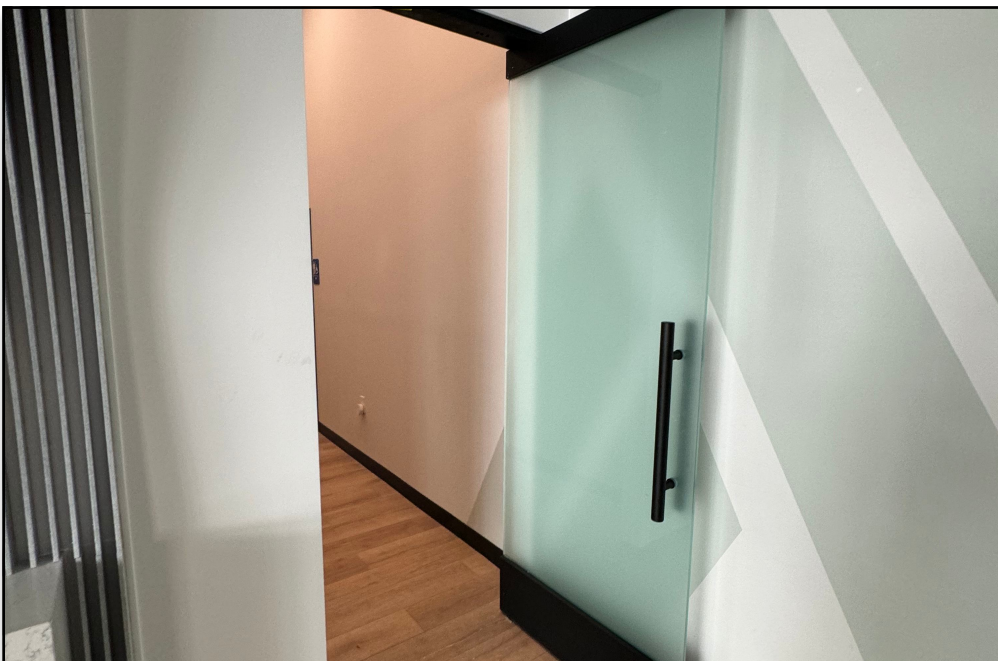
Pasadena, California



Lead time: 2 weeks.  
Glass usage: 986.44 sqr. ft.  
Openings: 14









# Office Space

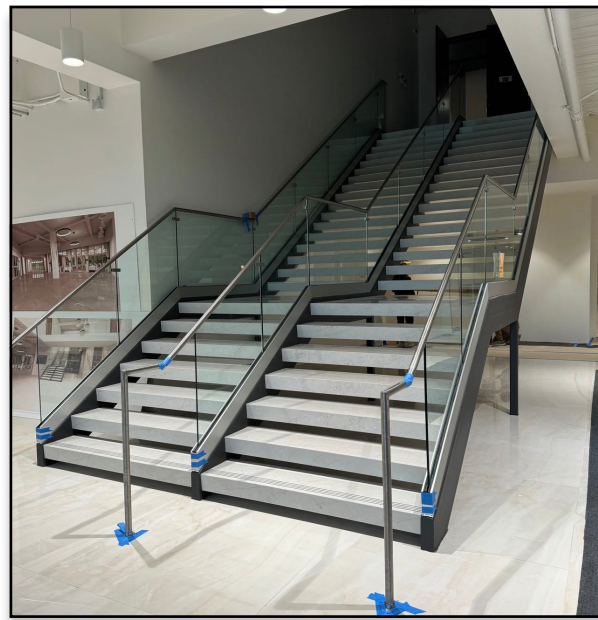
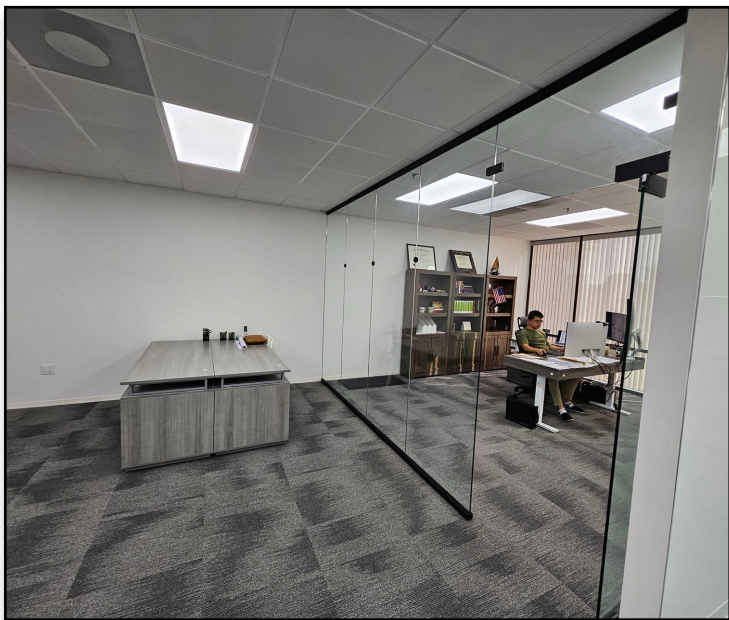
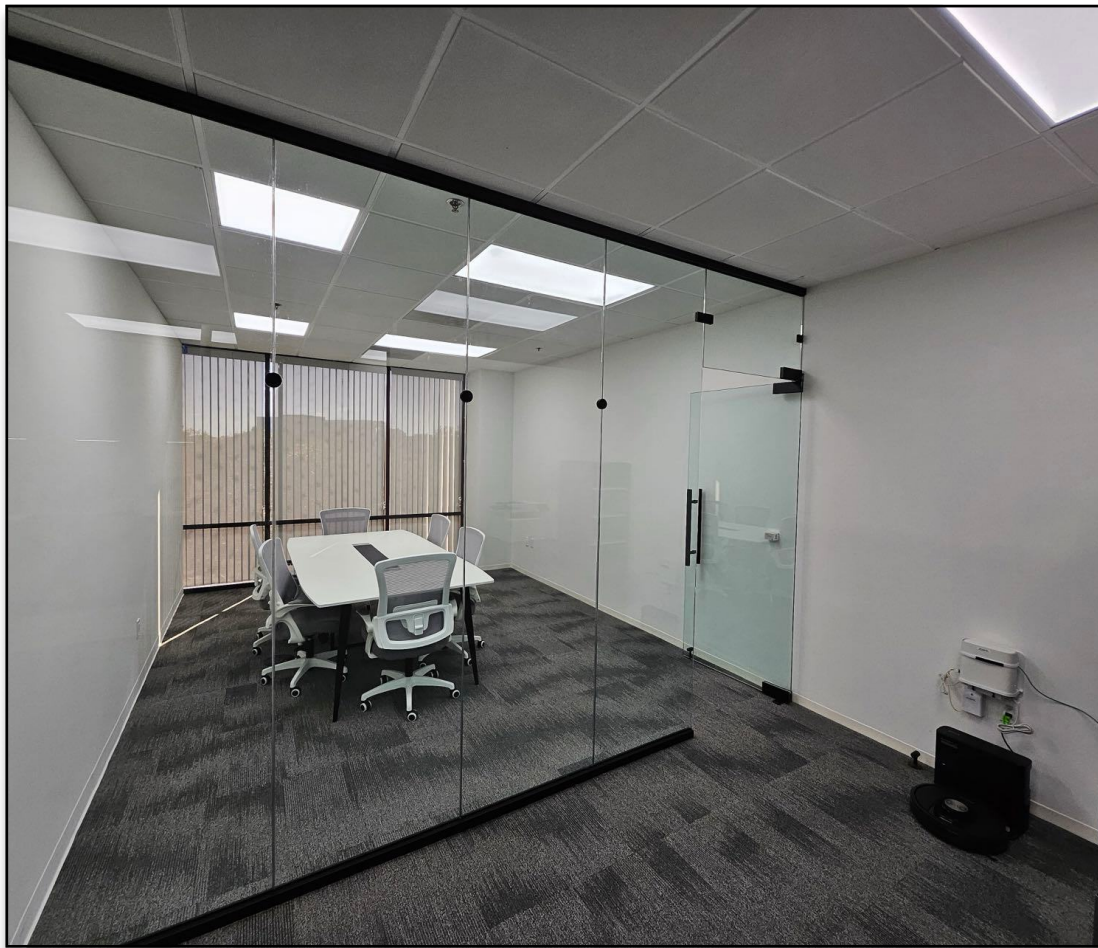
Diamond Bar, CA





# Design Inspiration

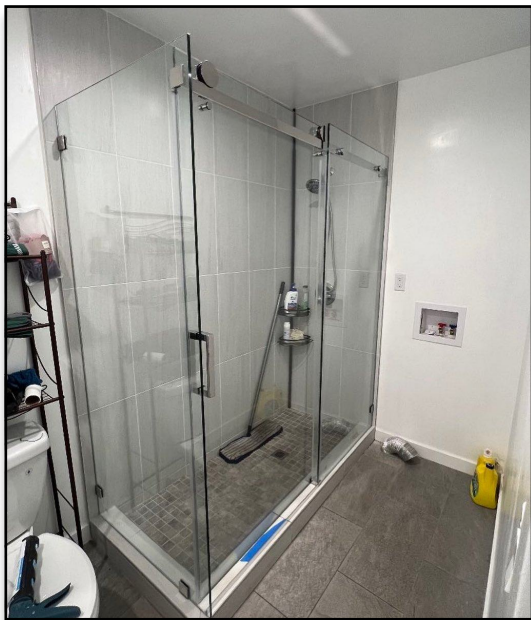
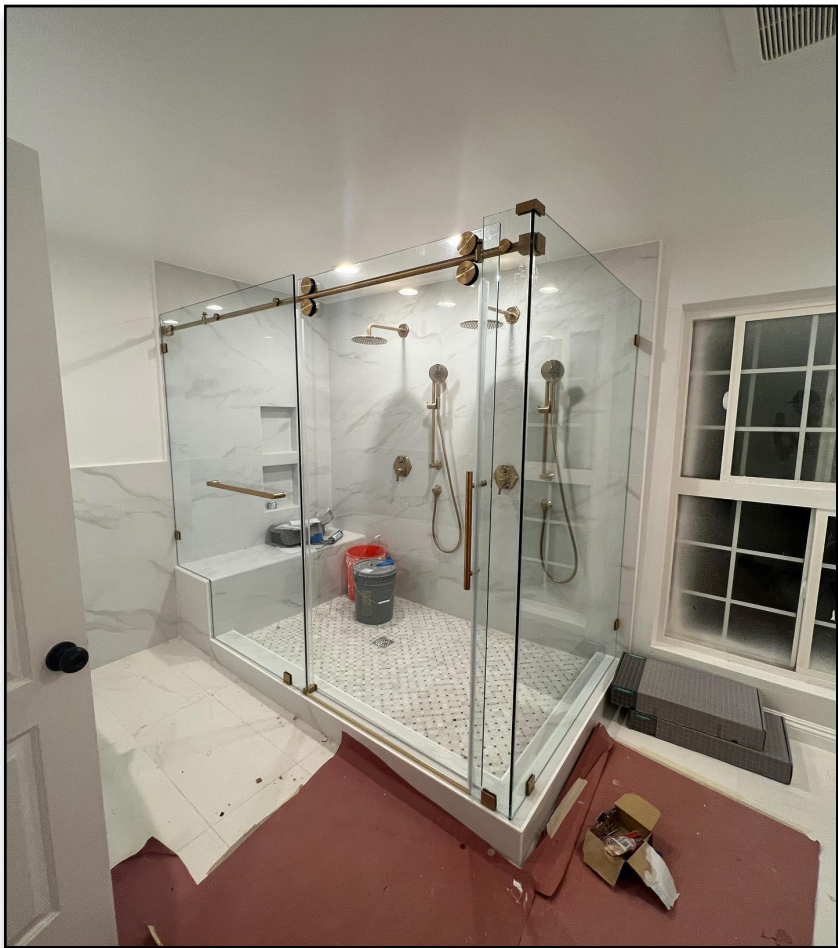
## Commercial Applications





# Design Inspiration

## Single Sliding Corner Shower





# Design Inspiration

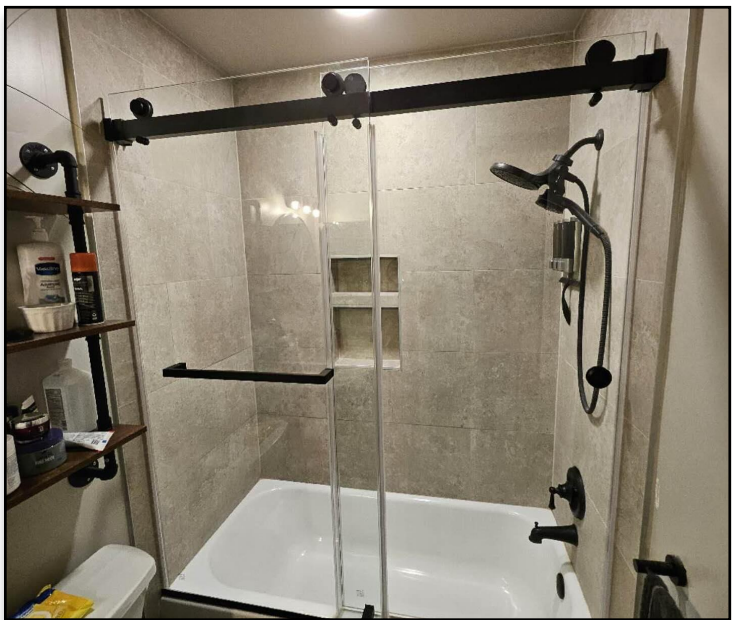
## Single Sliding Shower





# Design Inspiration

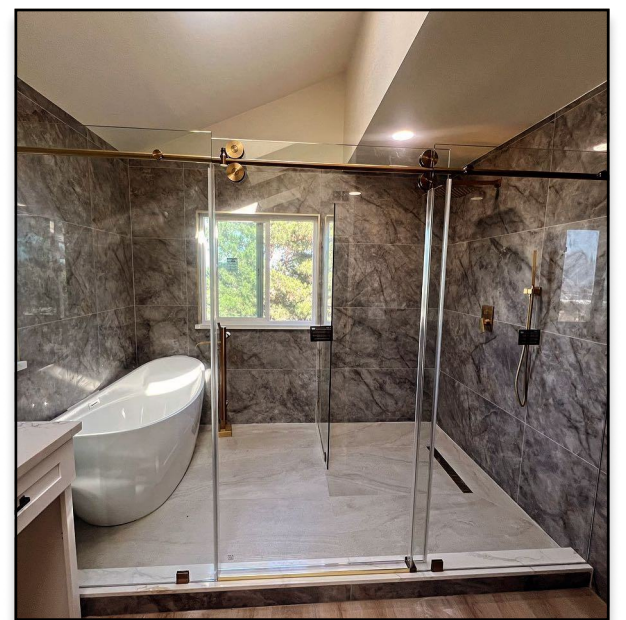
## Double Sliding Shower





# Design Inspiration

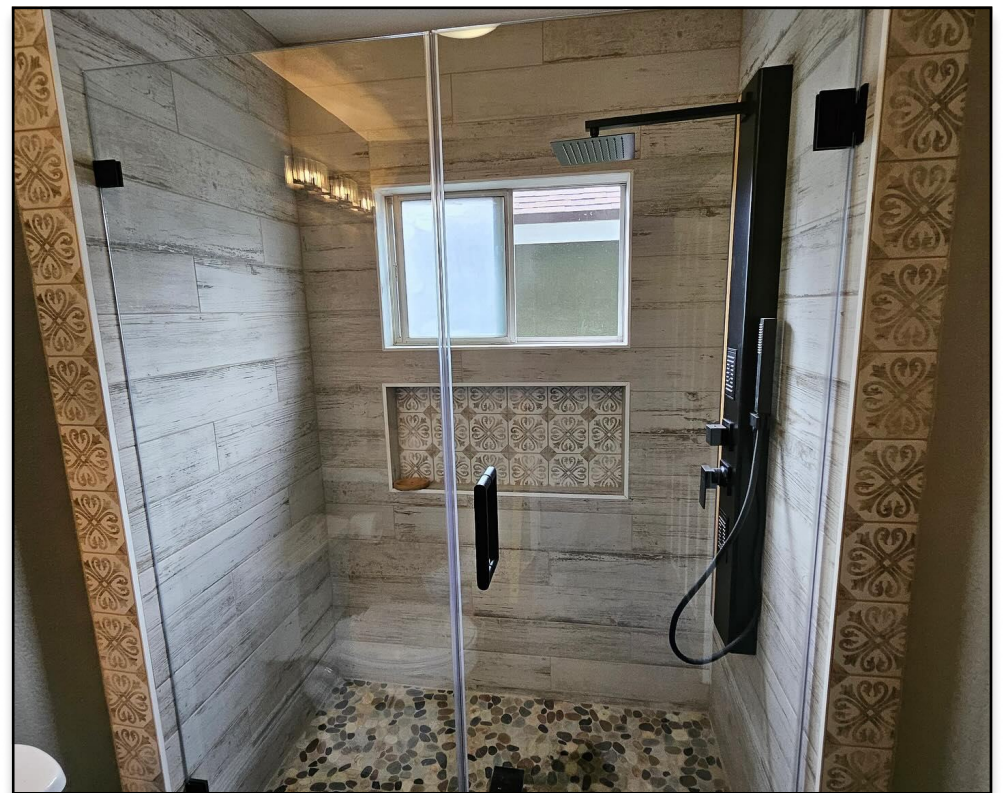
## Extra Large Single Slider





# Design Inspiration

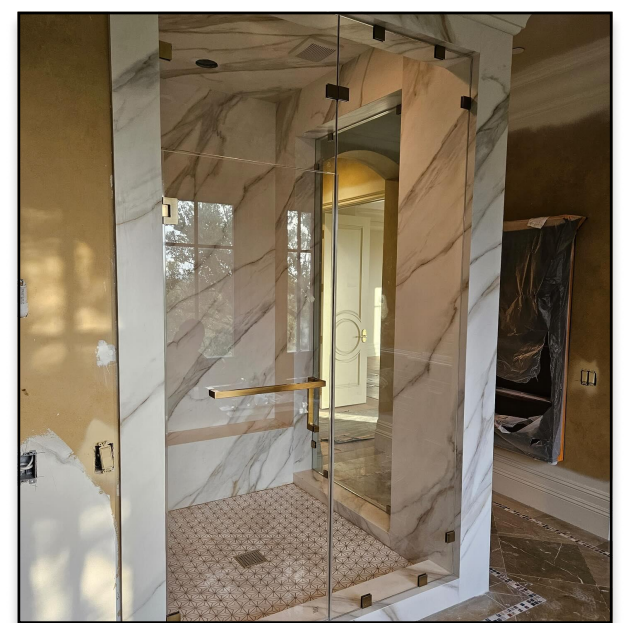
## Single Door & Panel Shower





# Design Inspiration

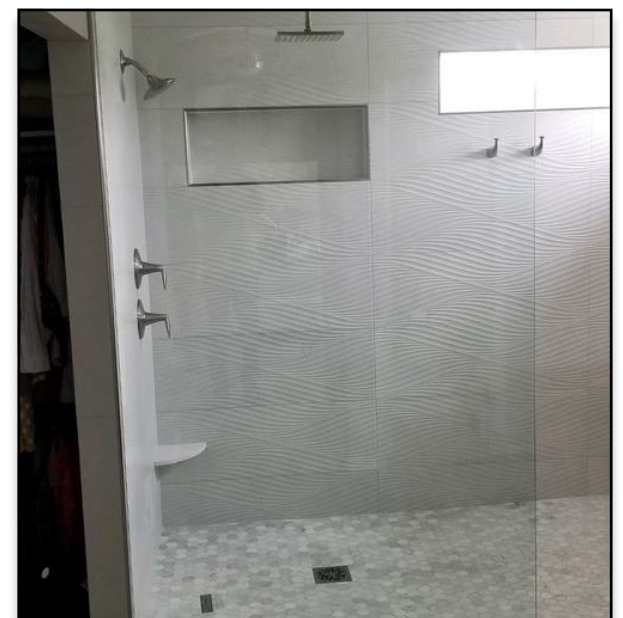
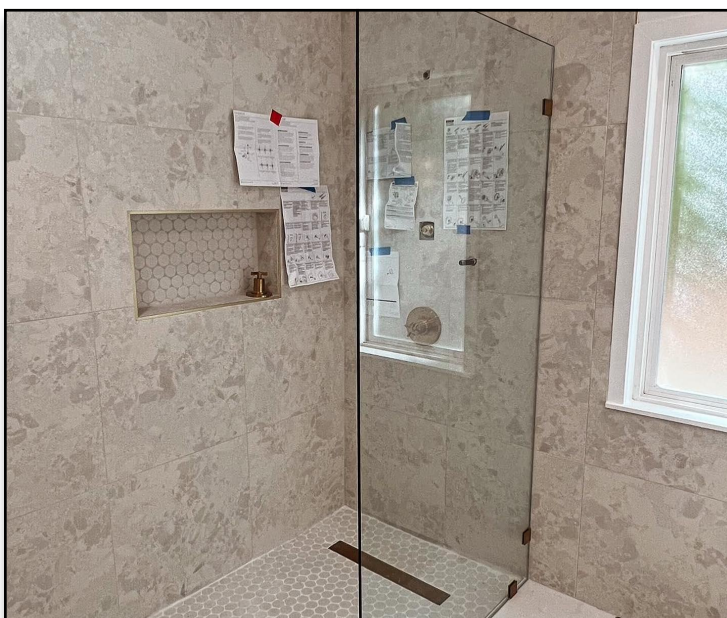
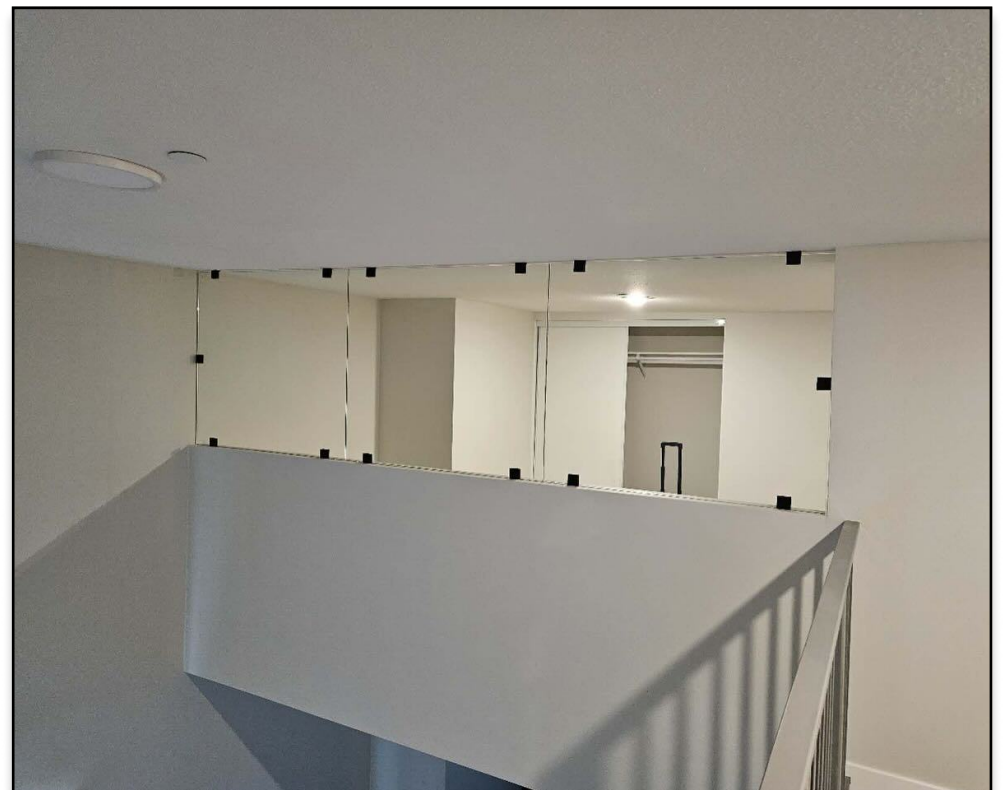
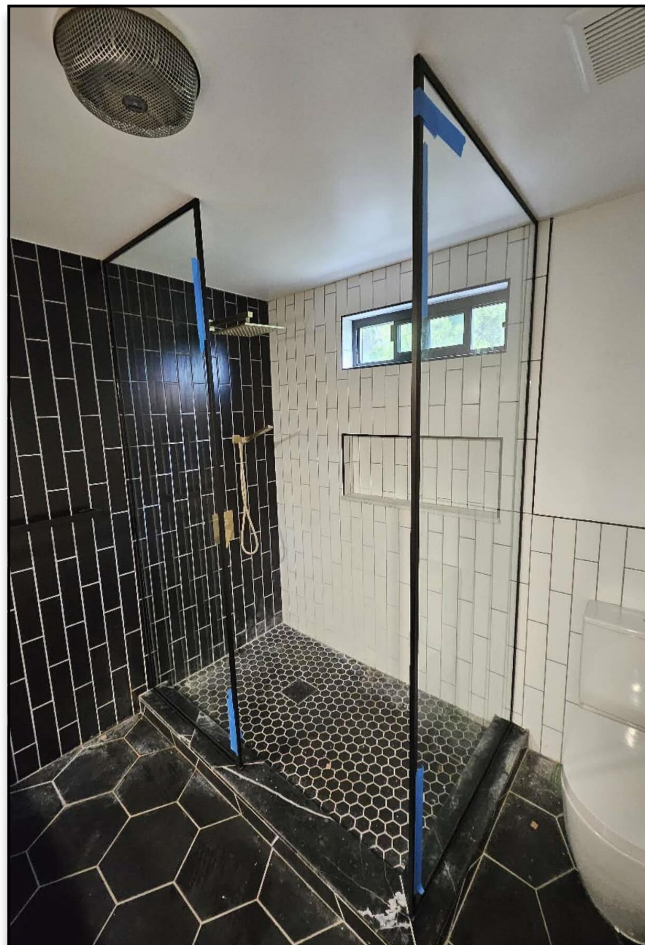
## Extra Large Custom Showers





# Design Inspiration

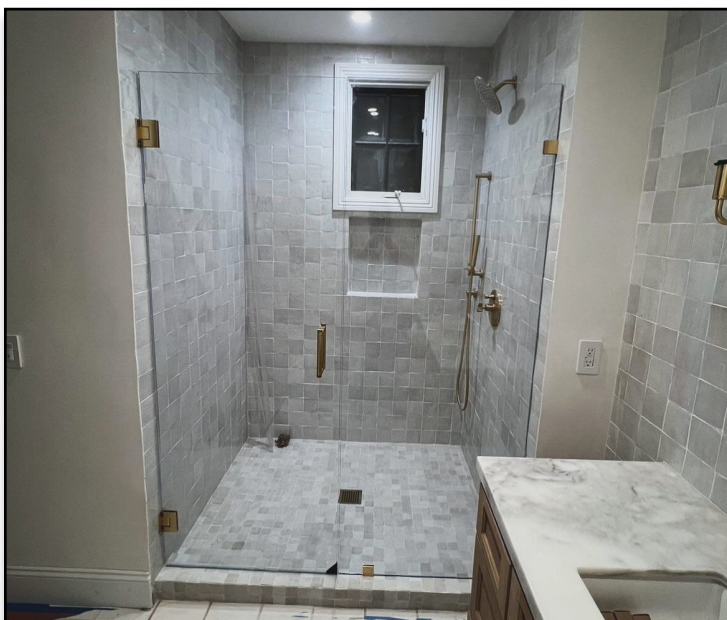
## Fixed Panels





# Design Inspiration

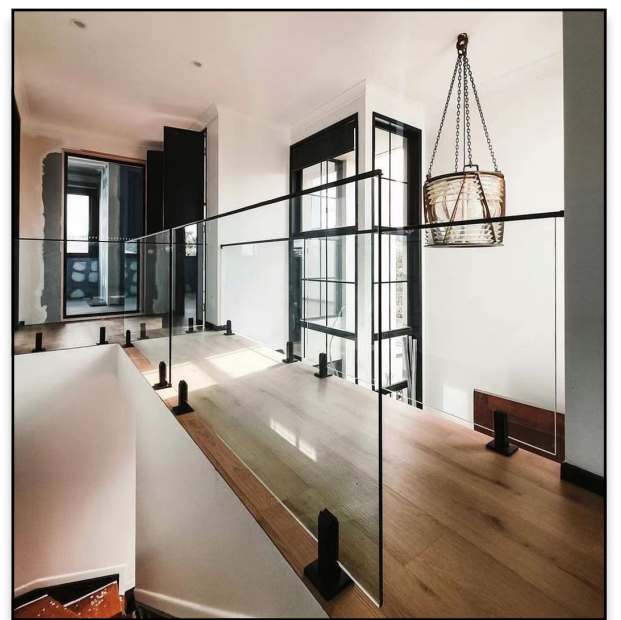
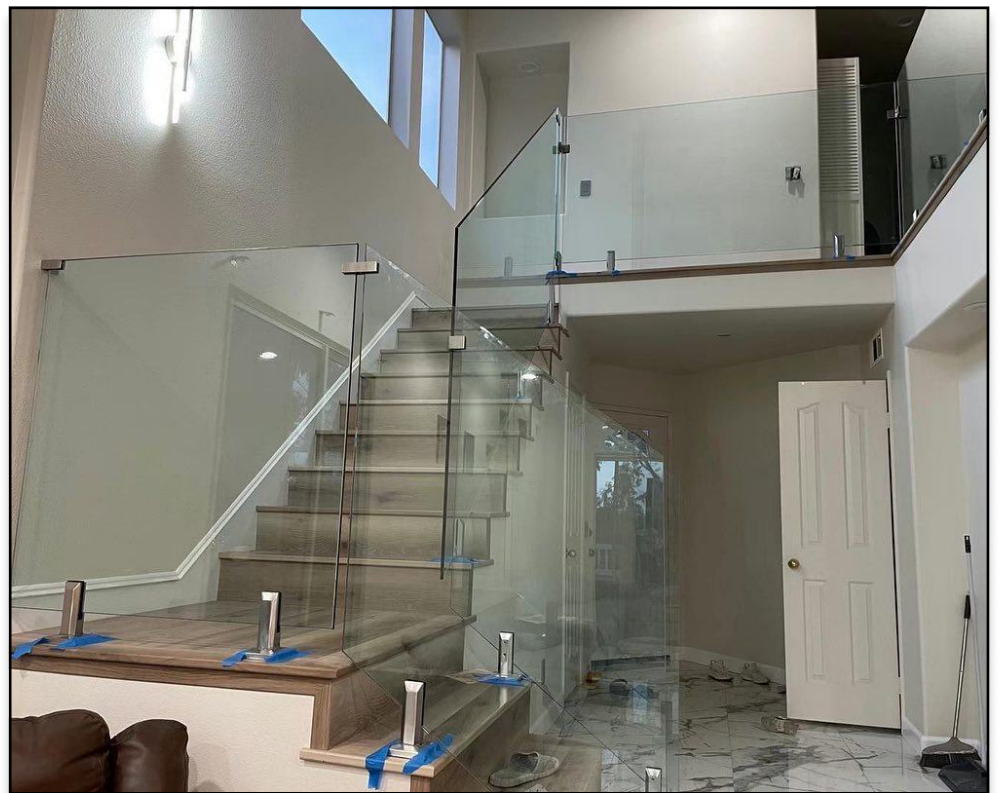
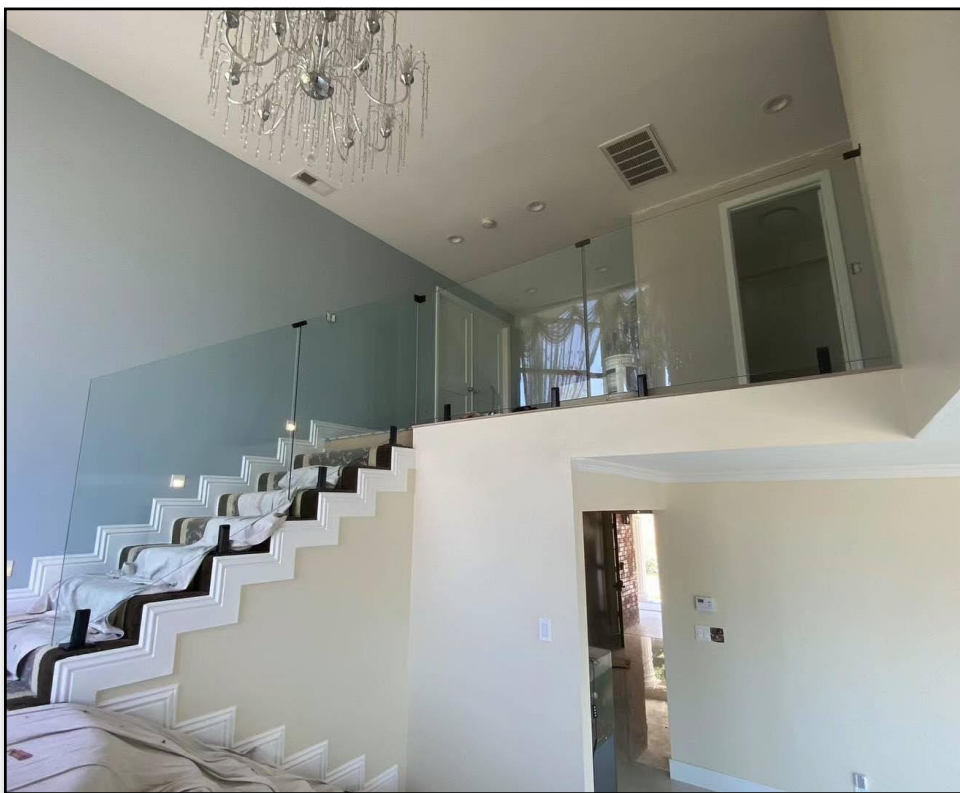
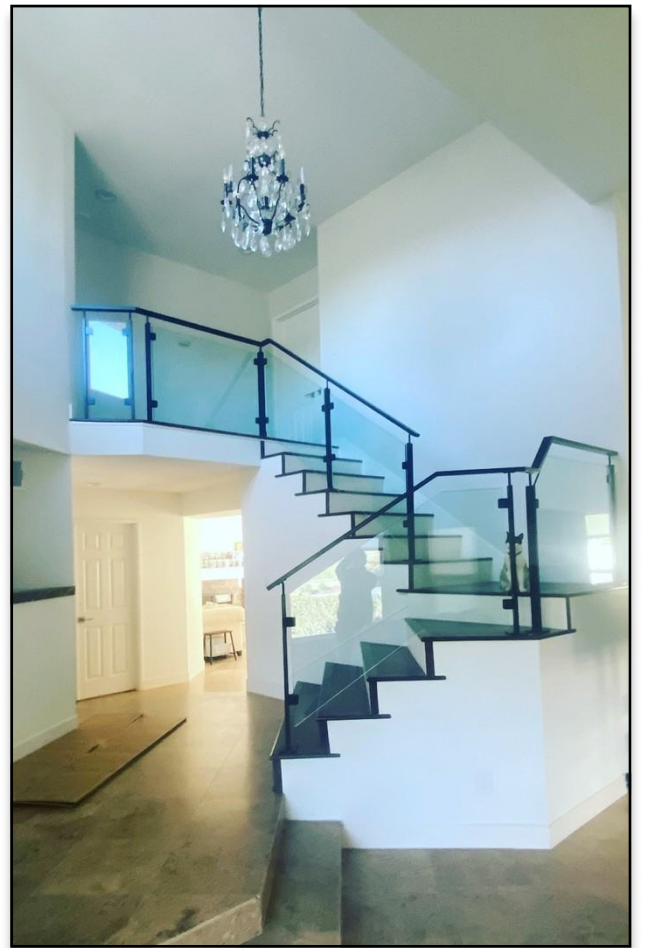
## Textured Doors





# Design Inspiration

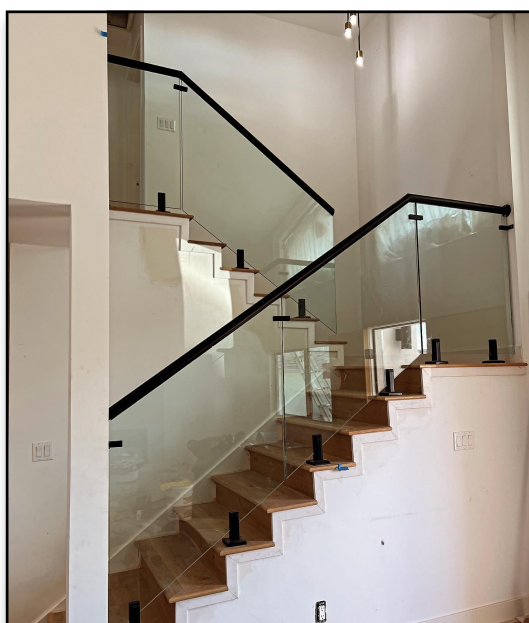
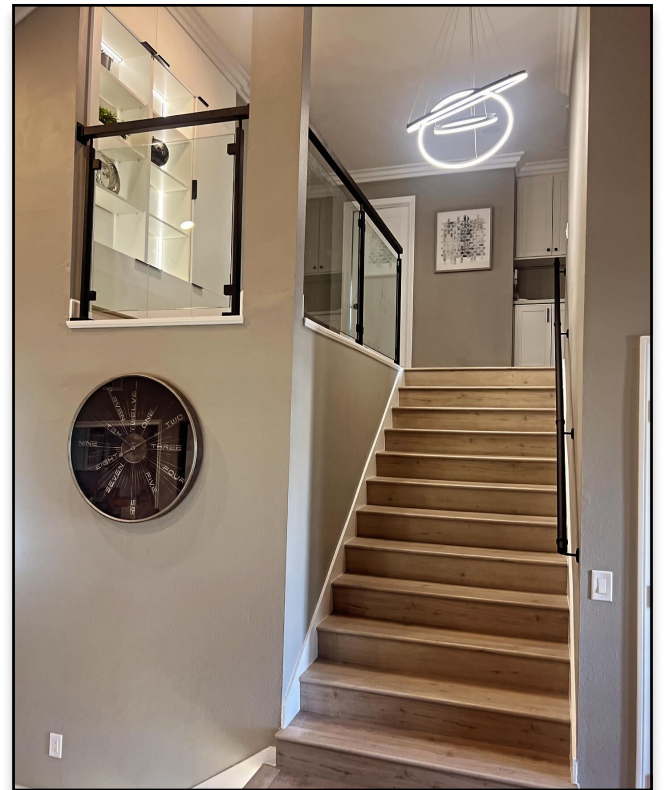
## Glass Railings





# Design Inspiration

## Glass Railing





# Design Inspiration

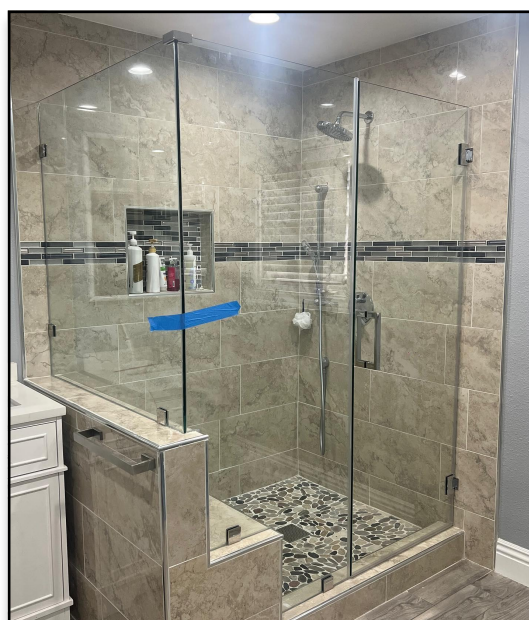
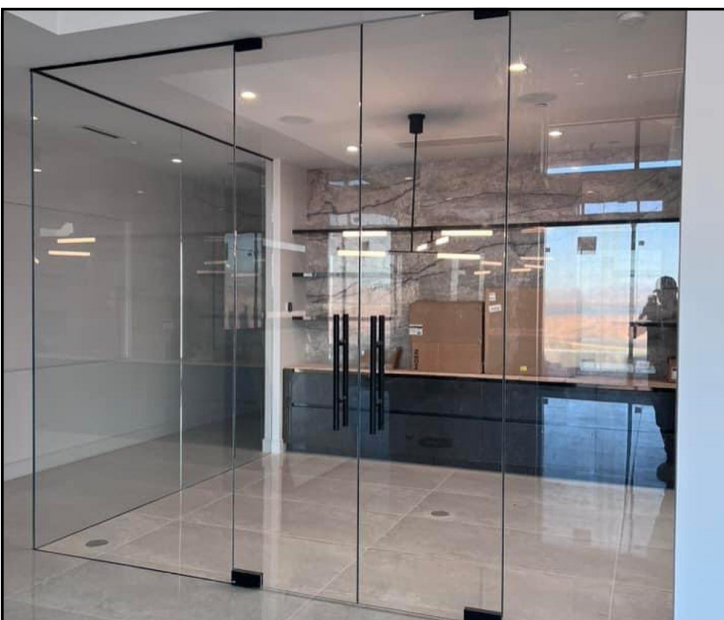
## Mirrors





# Design Inspiration

Miscs





**AZUPIN** Glass & Hardware  
1265 S. Johnson Drive #B,  
City Of Industry, CA 91745

PRSRT MKTG  
U.S. POSTAGE  
**PAID**  
INDUSTRY, CA  
PERMIT NO.1721

HUGE SELECTION OF GLAZING HARDWARE AND SUPPLIES

BULK DEALS AVAILABLE



**PRE90H**  
Standard Shower Hinge. Solid Brass.  
**Starting at: \$18 each.**

**1-909-276-7014**  
azupin.glass

**CATALYST**  
3/8" Clear Tempered Glass, EnduroShield coated,  
Stainless Hardware  
**Starting at: \$300 a set.**



**AM8X8R**  
8" Back to Back Handle. Solid Brass.  
**Starting at: \$18 each.**