

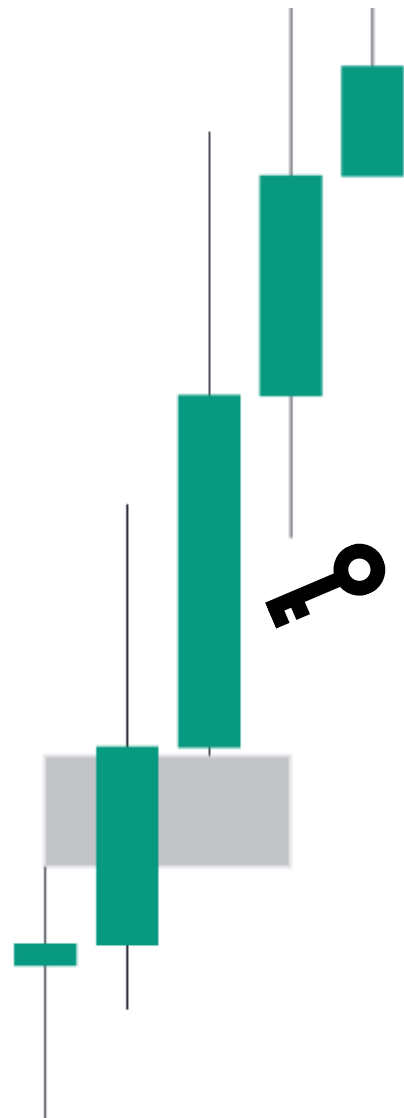
ARJO'S

GAP THEORY

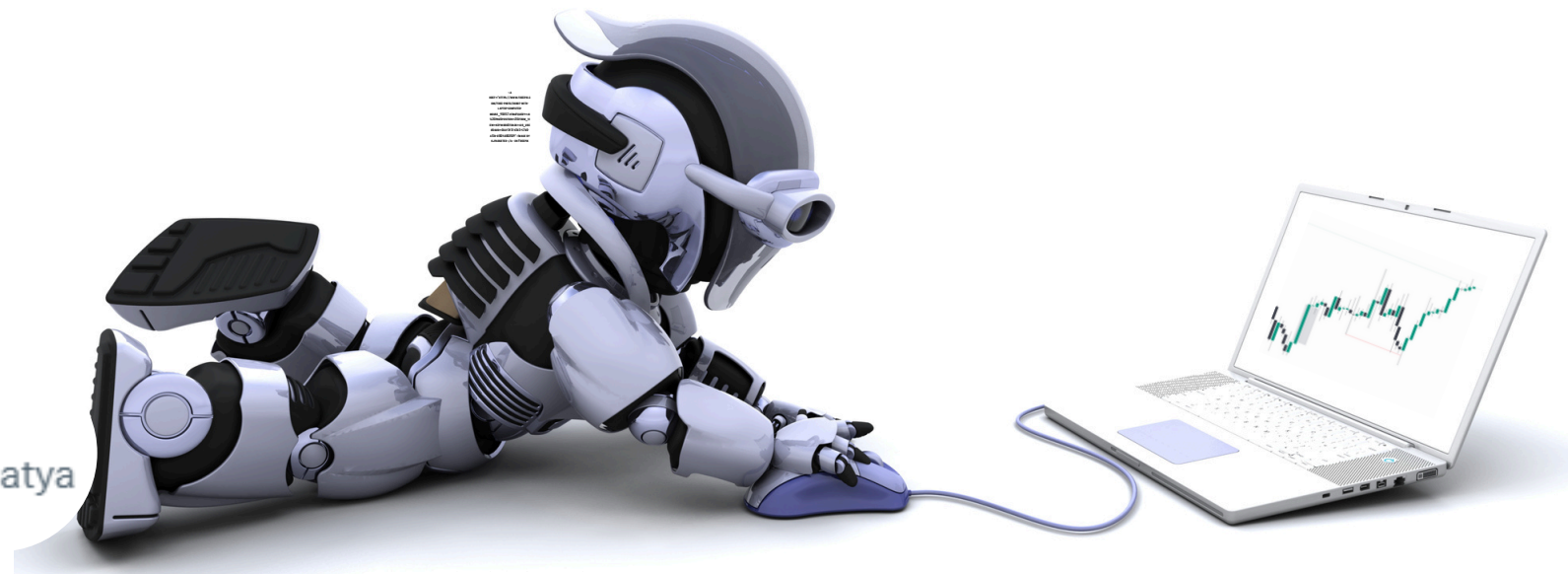
BREAK AWAY GAP

FAIR VALUE GAP

HOW TO TRADE THEM?



SATYA 
@ambeingsatya



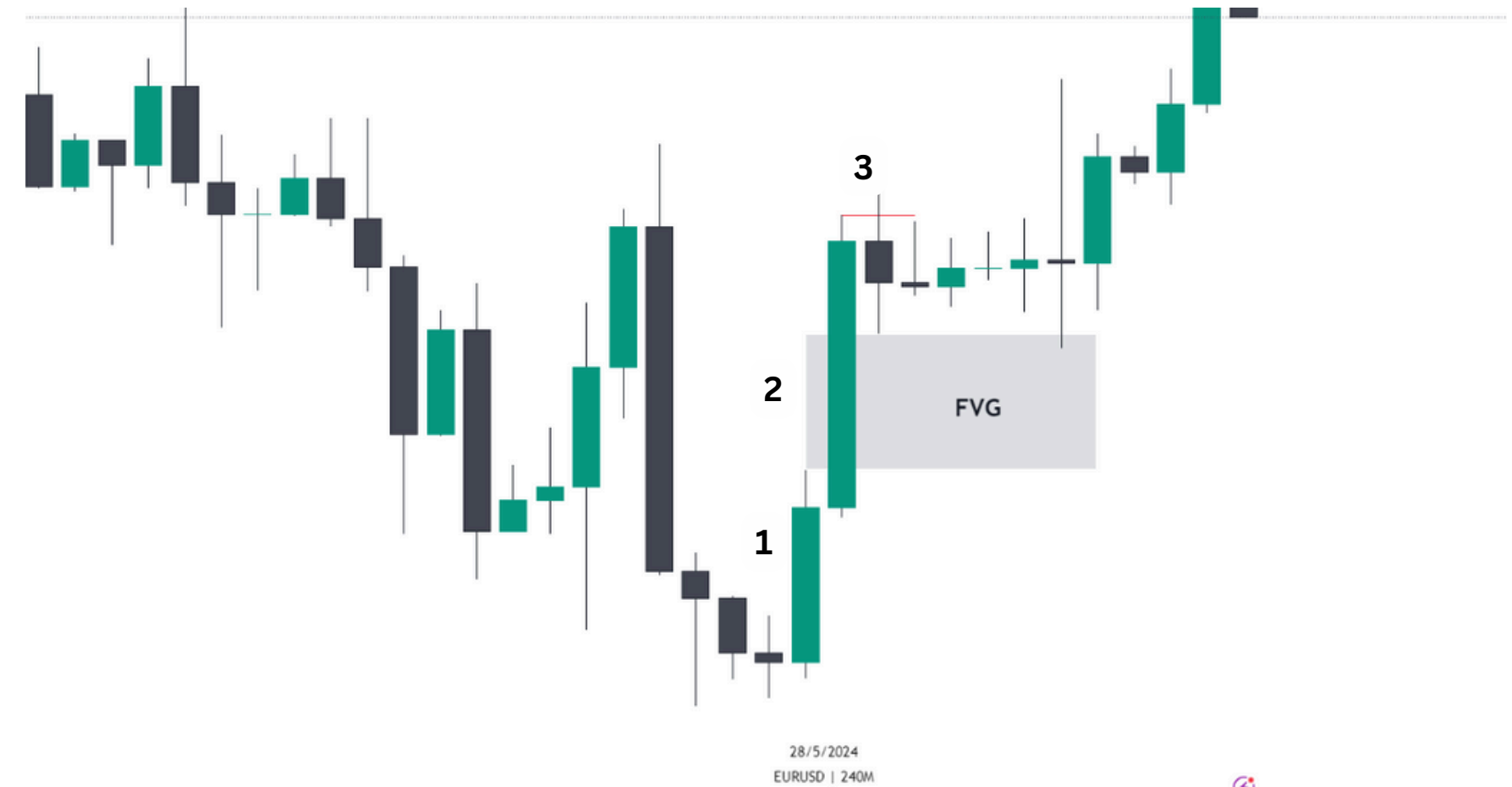
Thanks to



Arjo 
@arjoio

FAIR VALUE GAP

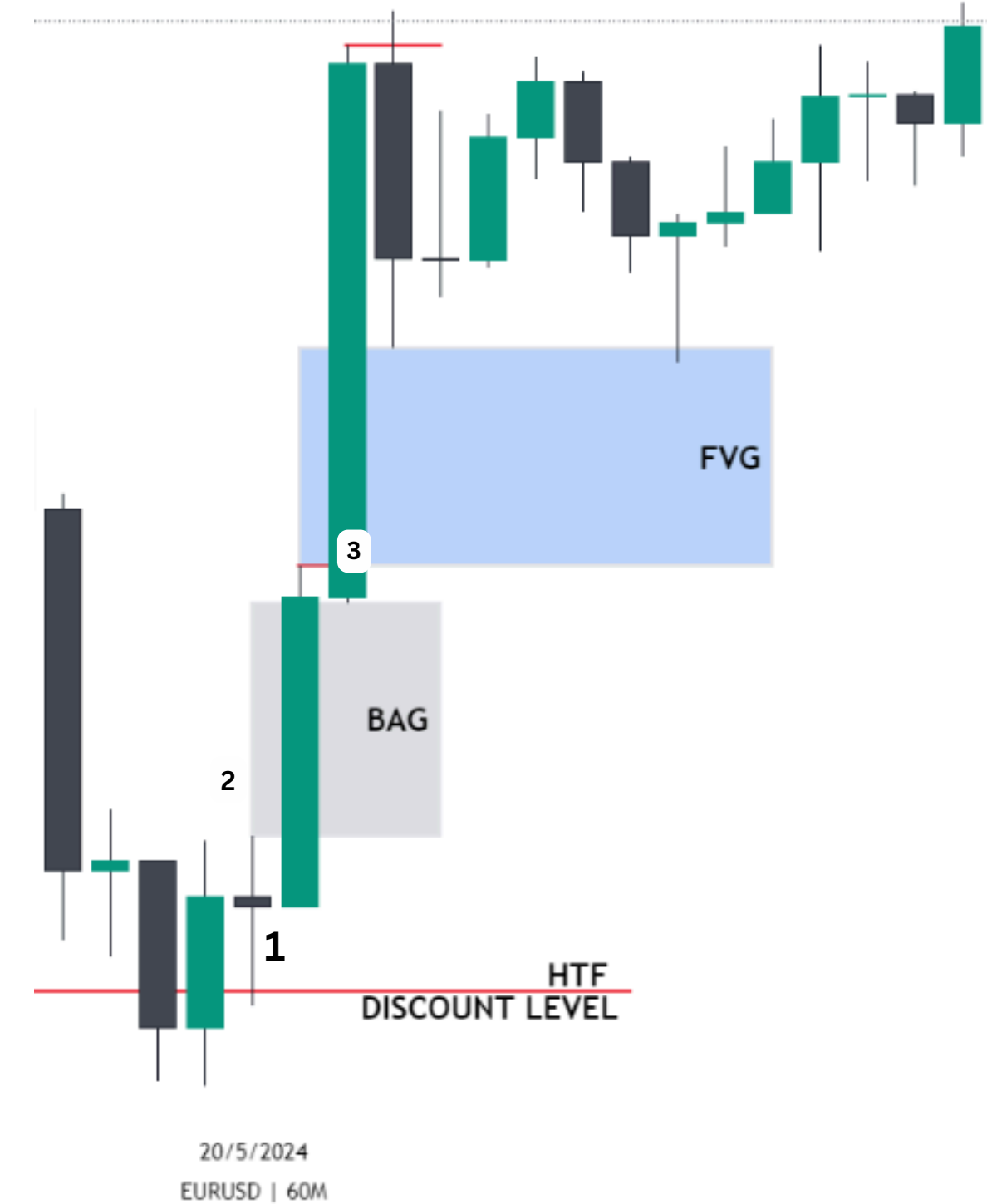
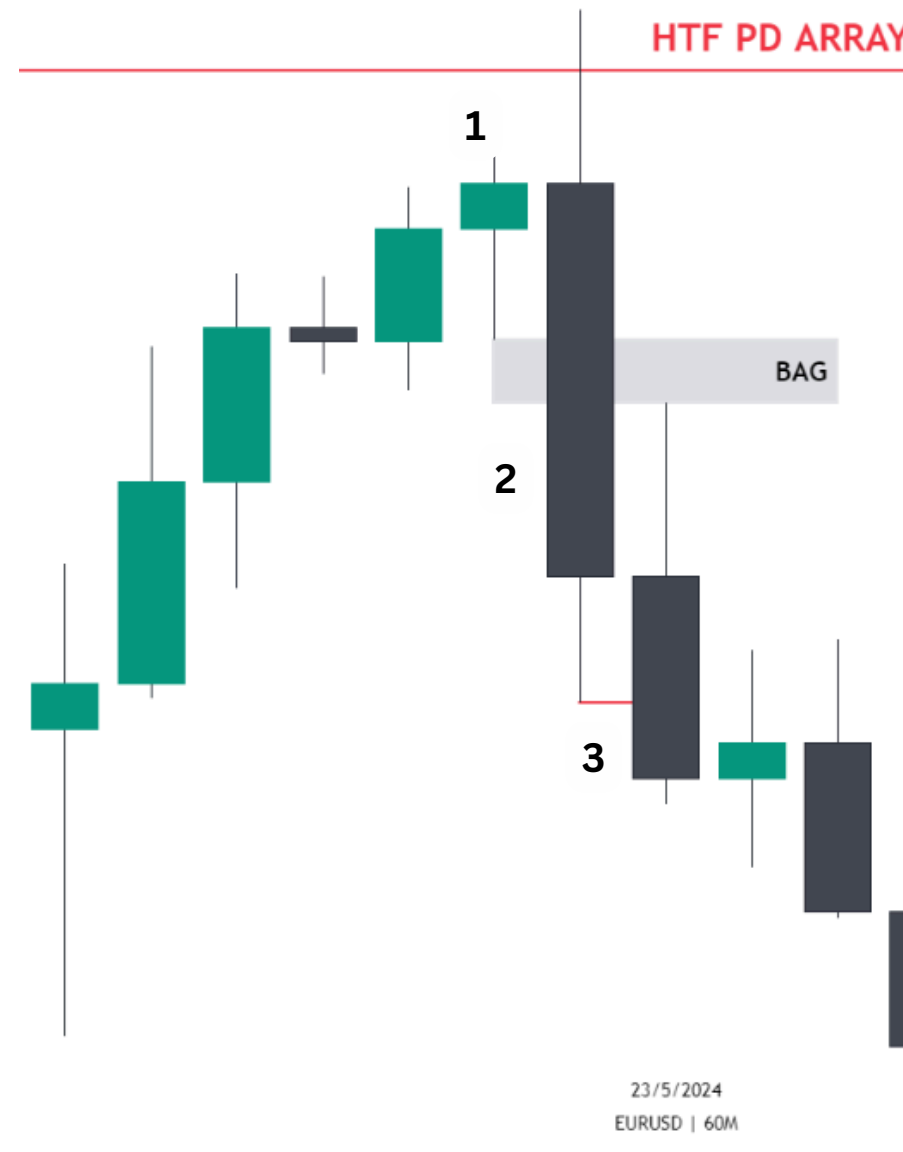
- The gap b/w the 1st and 3rd candle .
- If the 3rd candle closed or consolidated inside the second candle it offers entry with some confirmation on basis of HTF bias.





BREAK AWAY GAP

- The 3rd candle which closes above or below the 2nd candle confirms the Break away gap(BAG)
- Buy side:- the 3rd candle body close above the 2nd candle high. Indicates buy side pressure .
- Sell side:- the 3rd candle body close below the 2nd candle low. On seeing those sell side pressure we mostly (not every time)don't get a pullback into the FVG above.

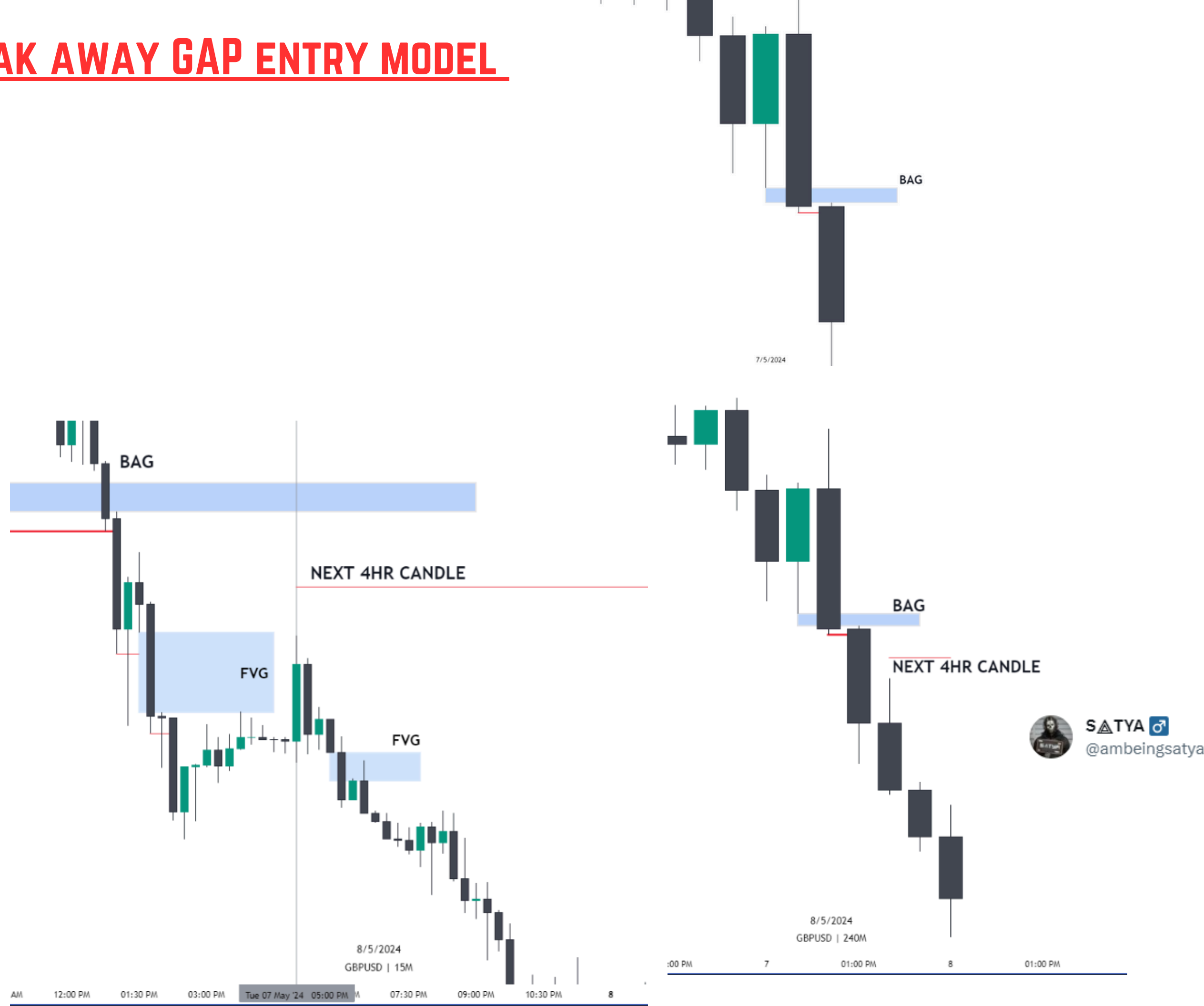


BREAK AWAY GAP ENTRY MODEL

SELL PROGRAM

- Find out the break away GAP as shown
- Mark the body of the 3rd candle which closed below the 2nd candle low .
- Lower time frame BAG entry should be after the completion of 3rd candle.
- strictly 2RR recommended

* THIS SAME APPLICABLE FOR THE BUY PROGRAM

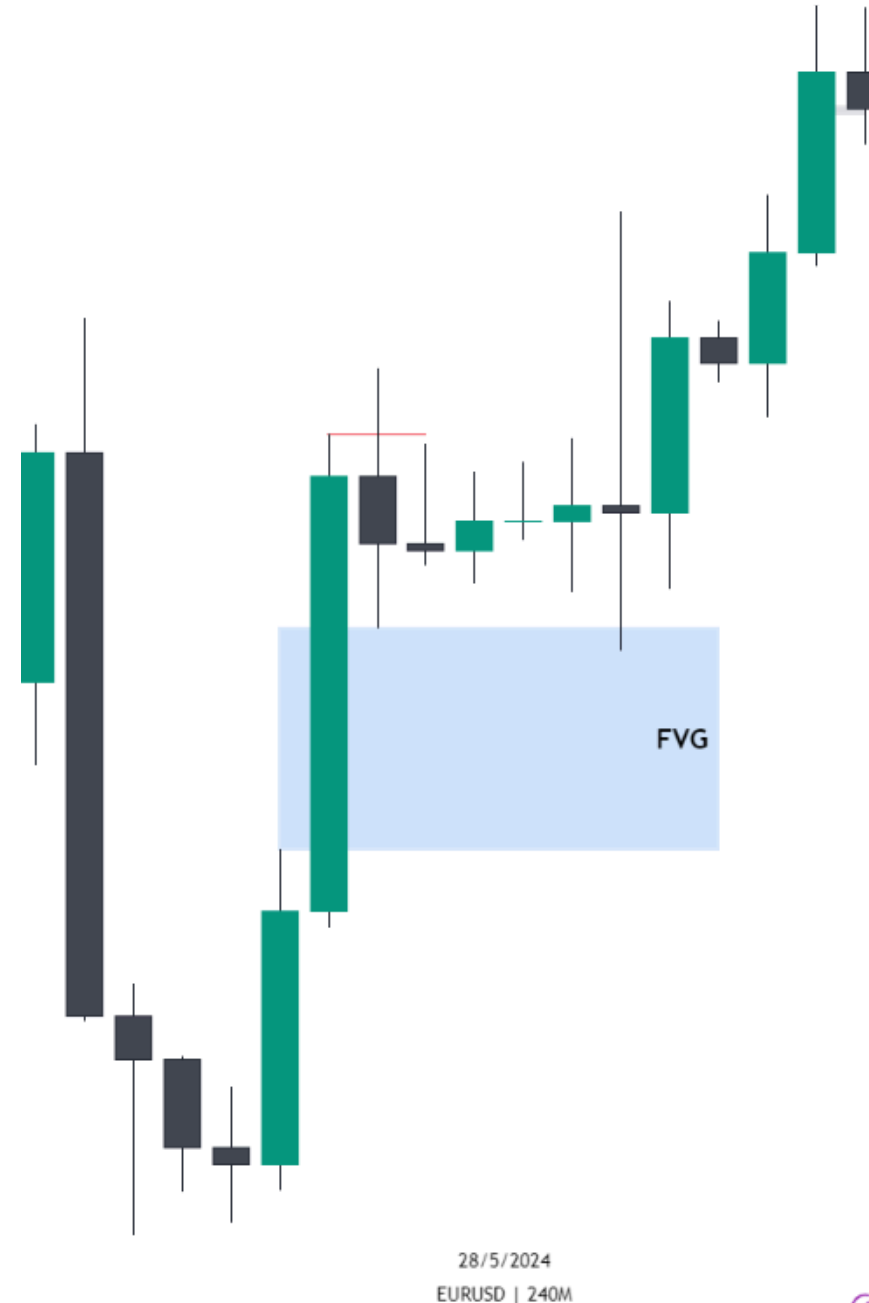


FAIR VALUE GAP ENTRY MODEL

BUY PROGRAM

- Wait for the 3rd candle to consolidate or close below the 2nd candle to confirm the FVG.
- Then switch to the lower time frame. wait for the lower time frame FVG
- PLAN YOUR 2RR TRADE

THIS SAME APPLIES FOR SELL PROGRAM



POINTS TO REMEMBER

- Only sell at premium & Buy at the discount.
- Stick with the HTF bias.
- Participate during the kill zone.
- Risk management is the key for a profitable Trader.
- Strictly 1:2RR



FOLLOW ME FOR MORE EDUCATIONAL CONTENT.



SATYA 
@ambeingsatya

Thank You!