

So You Wanna Mod Skyrim

A Guide By Lustful Luna



[Lustful Luna's Reddit](#)

[Pornhub](#)

[Patreon](#)

[Twitter](#)

IMPORTANT READ THIS: I do not claim this to be the best setup out there nor the most efficient, but it works perfect for me. This guide has all the mods that I use in my videos and more. But please understand that I do a ton of editing and touch up to my videos so that they look more cinematic. Watch this [introductory video](#) and you'll see what it will actually look like without editing. This guide is technically for Skyrim SE because that is what I use but I'm sure 90% of it applies to Skyrim LE ; **if you are using LE make sure you read the short passage underneath the requirements sections.**

If you are Completely new to modding or just installed Skyrim and want a fresh start then read from the very beginning.

If you already have a modded Skyrim then skim through the first few parts to make sure you have the required mods, then you can skip to part 4.

Requirements/Prerequisites

- **Generally know how to use a mod installer**

Modding Skyrim is stupid easy. If you don't know how to use one or which one to install I'll link a couple of examples. I hear MO2 is the best mod installer. Choose only one of the two.

Links v

[How to install and use MO2 \(We'll install SKSE Later\)](#)

[Installing SKSE \(Which you'll need later\) and how to install/use vortex mod manager](#)

- **Have a decently good computer**

Ok technically not a requirement, but If you want both good looking graphics and high fps, then you're gonna need a computer built for gaming. To give you a very general point of reference, on my old set up I had 20 fps with a Nvidia gtx 950, 16gb of RAM, and an I7. With my current setup I have 55 FPS with a Nvidia gtx 1070, 16gb of RAM, and an I7. Don't ask me what fps you will get with certain hardware because I will not know.

- **Be able to do your own research/troubleshooting/reading**

I can't write down every little itty bitty detail, I expect you to read the guide thoroughly as well as read the mod pages and forums linked. I have a common issues part in this guide that shows every issue I have personally encountered and was able to troubleshoot as well, but don't have a 100% dependency on it. If you have other mods

already installed that are not in this guide then you are responsible for finding any overlapping conflicts. **Please, do not contact me expecting me to be your IT support.**

- **If you're doing a fresh install be ready to commit quite a bit of time**

No seriously, I recently had to do a fresh install and set up everything from scratch and it took me like 6 hours even though I've done this before. In total, you will need 40-50 ish mods to get this working (bare minimum) but only like 10 of those are the actual sex mods. **If you are a newbie, it may take way longer. You may get frustrated and run into issues, don't expect to get everything done in one day.**

- **Please, for the love of god, use the checkpoints I give you**

The checkpoints are specifically parts where you run the game to make sure nothing explodes and everything up until that point is working correctly. Most of the time you'll find everything is working A-ok, but if something isn't then at least you'll have a way easier time troubleshooting and working backwards to see what mod is not working as intended.

If you are using Skyrim LE instead of SE read this

The links I provide you will not work because they are meant for SE, you will have to go either on [nexus](#) and type them in the search bar, or on google. Note, that the names for some of the mods may have very slightly changed between editions, and LE may require additional mods to work. So it is very important that you check the

“requirements” tab on every mod that you download. Most of this guide should be applicable, but you are responsible for finding alternative mods if for whatever reason an SE mod is not available for LE.

“But Luna, why do you prefer SE over LE and what is the difference?”

To keep things brief, LE and SE are 90% Similar, so honestly don't sweat on what version you have. I've used both but settled on SE because it is generally more stable and there are a few SE only mods that I use. If you use LE then it's not an issue, the SE mods are not a hard requirement and in fact you can probably find replacements /alternatives for them. So again, don't sweat on what version you have

You ok with those requirements? Cool, looks like you're ready to start modding.

But If I find out you didn't read the prerequisites I will swallow your soul!

Part 1 The Foundations

These mods will layout the base and foundations for the sex mods and other mods you will install later. **If you do not install these mods, the other mods will have a 0% chance of working.** Ok that's not entirely true for SOME mods, but I'm sure that red font got your attention. **All mods are hard requirements unless otherwise stated.** You can follow the general order of installation I provided and it should all work, later you can download a program called loot that will organize it all for you but theoretically, this load order should be fine.

1. Skyrim Script extender

How to install and where to get it:

https://www.youtube.com/watch?v=IcBhQcVzCwQ&ab_channel=Apoqsi

Skse extends scripting capabilities ingame, which many mods will require.

2. [Unofficial Skyrim special edition patch](#) (Highly Recommended)

Fixes bugs and stuff.

3. [SSE Engine Fixes](#) (Highly Recommended)

Fixes issues with the Skyrim engine, if you are using LE then download [crash fixes](#).

4. [Sky UI](#)

Changes the Skyrim interface and adds MCM in your pause menu, many mods will need this.

5. [UIExtensions](#)

Adds some additional menus that other mods will take advantage of.

6. [Alternate Start Live Another Life](#) (Highly Recommended)

Not required, but highly recommended to make a new save, this mod will let you skip the opening helgen part so you can get right to the action.

Check Point 1 - Next, run Skyrim just to make sure nothing explodes. Wait a minute or two, save, then quit.

7. [Address Library for SKSE Plugins](#)

This mod “contains header file and a database to make SKSE DLL plugins version independent easily” What does that mean? I have no clue, but it’s a hard requirement for some mods down this list so download it.

8. [ConsoleUtili](#)

Lets papyrus scripts execute console commands, needed for other mods.

9. [Forces New Idles In Skyrim \(FNIS\)](#)

IMPORTANT: This is a mod with special instructions, download the XXL version and if you want creature sex then you will also need to download the creature FNIS as well, which is in the same link. Also, you will have to run it after installation. **Then after that**

anytime you install/uninstall any animation mod you will have to run FNIS to update the animations in your game, more info on that later.

“But Luna, why use FNIS when you can use the newer Nemesis instead?”

Nemesis does not support creature animations, simple as that (I’m sure they will eventually add that, so be sure to check). There is currently a hybrid approach using both FNIS for creatures and Nemesis for everything else. For the sake of simplicity I only put FNIS in this guide since it can do both human and creature animations. If you’d like, feel free to look up the hybrid approach.

10. [JContainers](#)

Needed for other mods.

11. [PapyrusUtil](#)

Same as above.

12. [Racemenu](#)

Huge character customization upgrade.

13. [Skyrim Project Optimization](#) (Optional)

Optimizes the game and improves performance in Skyrim’s interiors, not required, but recommended.

14. [Fuz Ro D-oh](#)

Allows dialogue for lines with no voice files, very common requirement for a lot of mods.

Checkpoint 2 - Run Skyrim to make sure everything is installed alright, then open up the console command by pressing “~” while in game and type “showracemenu” then press enter. This is just to make sure racemenu works, **I recommend you finish installing all mods before making your character.** Wait a minute or two, save and quit.

15. [Add Item Menu](#) (Recommended)

Will basically let you grab items from any mod you install with just the press of a key.

Very simple yet extremely useful tool that you use for a lot of mods, even ones not listed here. Follow instructions on the mod page to learn how to activate and use it.

16. [BodySlide and Outfit Studio](#)

Tool for customizing body shape, and converting Skyrim clothes/armor to certain body types, needed for other mods and you will eventually learn how to use this tool.

17. [Either CBBE OR BHUNP Body Replacer](#)

IMPORTANT: I am linking CBBE because that is what I use, if you want BHUNP just type it in nexus. Either one will work.

“But Luna, why use CBBE when you can use BHUNP and have more polygons overall?”

Some of the outfit/armor mods I use are only available for CBBE body types. However, you can find plenty for BHUNP. I've used both and settled on CBBE because I personally feel vagina collisions look better with CBBE 3BBB (for my videos at least). Choose one or the other, not both.

18. [XP32 Skeleton](#)

IMPORTANT: Run FNIS after installing. This mod allows the body to be edited in ways it couldn't before, needed by other mods.

19. [HDT SMP Skin Meshed Physics](#)

Makes your skin have collusion. Needed for other mods.

Checkpoint 3 - Run Skyrim, set up the add item menu tool by following the instructions on the mod page and just make sure it works. Then take off all your clothes, make sure you are naked and you can see your breasts. If you can, you installed CBBE or BHUNP right. We will install physics later, so don't worry about that part yet. Wait a few minutes, save and quit.

Part 2 Making Skyrim Look Good With Optional Textures

Great, you've laid the foundation out. Now it's time to make the environment and lighting and the npc's look sexy. Note these mods are big and will take a bit to download. **These are all optional, and interchangeable with your choice of textures/enb.** The only exception is SMIM, which I consider a hard requirement.

20. [Static Mesh Improvement Mod \(SMIM\)](#)

Improves appearance of 3D models in Skyrim.

21. [Noble Skyrim](#)

IMPORTANT: There are plenty of pretty retextures out there this is just the one I use BUT you also need to download the SMIM patch as well that is in the same link. Install in this order

SMIM → Noble Skyrim → Noble Skyrim SMIM Patch.

22. [Jampion NPCS](#)

Once again there are plenty of npc overhauls out there out there this is just the one I use because I know it's compatible with SOS which is another mod you'll need later.

23. [Tempered Skin For Males](#)

Make sure you download the SOS version, it works great with Jampion NPC's! It will make your men look really nice.

24. [Botox for Skyrim](#)

Makes generic female NPCs look nice. There are lots of female NPC overhauls out there, I use this because these NPCs make video making easier than other overhauls.

25. Silent Horizons ENB And ENB Helper.

[ENB Helper](#)

[Silent Horizons ENB](#)

IMPORTANT: This is another mod with special instructions. ENB Helper is needed for the Silent Horizons ENB. An ENB basically manipulates lighting and when combined with better textures, like Noble Skyrim, makes your game look next gen and very very pretty. You won't be able to install this normally like the other mods. There are plenty of ENB's out there this is just the one I use. [This is how to install an ENB.](#)

26. [Obsidian Weathers and Seasons](#)

I have this one because I know it works with Silent Horizons ENB. Adds pretty weather.

27. [Realistic Water Two](#)

Makes your water look very pretty.

Checkpoint 4 - Run Skyrim just to make sure you can boot it up without crashing or having your computer explode. The environment should look beautiful, next we will make your character look beautiful.

Part 3 Making Your Character Look Good With Optional Cosmetics

There are so many ways to make your skyrim character look good. These are just some of the key ones of what I use but there are plenty out there to add more customization to your character, so of course **these are all technically optional and interchangeable with any choice of mods you prefer**. The only exception is lazy tools, which I consider a hard requirement for the next mods in part 4.

28. [Brows](#) and [Kyo'e's Bang'n Brows](#)

Adds, well, more brows.

29. [Community Overlays 1](#) and [Community Overlays 2](#)

Adds more stuff like body paint to Racemenu

30. [Female Makeup Suite](#)

Adds Makeups to Racemenu.

31. [KS Hairdos - HDT SMP](#)

Adds Hair With Physics in Racemenu. Again, there are a TON of hair mods out there, but this is the only one I've ever needed.

32. [Skin Feature Overlays](#)

Scars, freckles, moles, etc.

33. [The Eyes Of Beauty](#)

Adds more really pretty eyes.

34. [Lazy Tools \(Grab Lazy Body Edit\)](#)

Note: This is not a cosmetic but it's a tool to make it easier to edit your bust size and thickness without having to open up the race menu and bother with a million sliders.

You only need the Body Edit File.

35. [The Pure](#)

There are plenty of skin textures out there, this is just what I use for females, I don't like the glossy versions so when installing just choose the most matte option if you want it to look like mine.

36. [My Character Presets](#)

If you downloaded EVERY mod in part 3, then you should have all the necessary mods to download the presets of the characters used in my videos. It's WIP so not all of my characters may be on there but I plan to eventually put them on there. Be sure to **check requirements** for the presets just in case.

Checkpoint 5 - Run Skyrim, wait a bit to let MCM register any new menus, Open Racemenu to check out the neat stuff you just installed. Save and quit.

Part 4 Bodyslide, outfits, and physics

3BBB and bodyslide and outfit studio can be a bit complex for beginners. Everything in this guide that involves bodyslide and physics will be covered in this part. Download all the mods and then **at the end you'll build them all in bodyslide at the same time so that hopefully you only have to use the program once and then never again.**

37. [The P3ACH](#) (Optional / Interchangeable)

There are many cbbe body presets, this is what I use. I'll show you how to actually apply it to your character after you download everything else.

38. [CBPC](#) (Optional)

This is a basic physics mod that works with 3BBB. It also adds a bulge to the belly when a penis enters a vagina, and applies physics to the armors that are not 3BBB compatible. Do note, that I normally disable this mod when I make my videos because I feel like the bulge is a little over the top.

39. [CBBE 3BBB](#) (Technically Optional, but highly recommended)

IMPORTANT: This is what makes breasts have amazing physics, it also provides vagina collusion. When installing, make sure that you uncheck the box that makes them install their own Curvy body preset. For reference, I used the "Full option" and the Size C breast option when I installed this mod.

40. [LazyBodyEdit- Breast Patch](#) (Required if you got 3BBB)

IMPORTANT: This allows lazy body edit to edit bodies with 3BBB physics. If you do not install this patch but have lazy body edit and 3BBB installed, not only will you not be able to edit the body easily, but the body will be stuck on a weight of 0, meaning you will have permanently small breasts until you install this patch. Other wacky things happen to the body if you do not have this patch.

41. [Bikini Armors Remastered \(TAWOBA\)](#) And [Nimirim Collection](#)

At this point I almost exclusively use armors and outfits created by Sun Jeong in my videos and honestly I feel like these will be the only two slooty armor packs you'll ever need. Note that TAWOBA is 3BBB Compatible, and that Nimirim is not, so CBPC physics will kick in for the Nimirim outfits. Because of this, I normally use Nimirim for gameplay/screenshots and TAWOBA for sexual scenes.

Once you've downloaded all of those mods, go down to the very last few pages of this pdf (around page 35), I will show you how to install and apply The P3ach, 3BBB physics, Tawoba and Nimirm at the same time. Or if you prefer, you can also see the instructions in the mod pages for each mod. The rest of my mods will not require the use of bodyslide and outfit studio so once you get that down you don't have to worry about using it.

The way I edit my bodies is by installing a bodyslide preset and changing stuff in the lazybody edit MCM. That's all I do, that way I don't bother with a million sliders. But the option to edit them through the racemenu is there.

Checkpoint 6- Run skyrim, go naked and make sure your character has 3BBB physics. Use add item menu to test out the armors you downloaded and just make sure they fit your body and have physics applied to them. Wait a minute or two for MCM to register any menus. You don't have to do it right now, but at one point I highly recommend you go through the MCM of the mods you downloaded and tweak options and hotkeys and stuff. Save and quit.

Part 5 Sex Stuff Time

You're finally here, the part where you're actually ready to turn skyrim into a sex sandbox. You have up to 3 options for sex mods. OSEX, Flowergirls, or Sexlab. I will have a brief description with the pros and cons of each, so that you can decide which to install based on your preferences. Note that some of the following mods are not on nexus mods but on lovers lab, meaning you'll either have to install manually or (I believe) most mod managers have an option where you can import a mod from your computer, so you'll have to download it and then use the mod manager to actually add it to your game. You will need a loverslab account to download mods from there (it's free). **Also, some of these will be the most complex mods you will install with special instructions on many of them and you might have to read the mod pages for some of these.**

“Luna, what Sex mod should I install and what's the difference?”

As mentioned previously, for sex you have the option for a few different mods. Of the three, Sexlab is what I exclusively use and recommend, and the rest of the guide after this and the common issues section is dedicated to this mod. But flowergirls/Osex are GREAT mods nonetheless and I actually have used both at one point. The main reason I have them in this guide is because they are way easier to install, and if you just want a one stop shop for Skyrim sex, you install those. In exchange, however, you trade off versatility. If you want to turn Skyrim into a true sex sandbox, you get sexlab. Below are some pro/cons of each and descriptions of what they do.

[Flower Girls](#) - One stop shop for immersive romance and there are plenty of amorous quests using this mod. If Bethesda tried to integrate sex/romance into Skyrim themselves, this is what it would look like in my opinion. Actually has quite a bit of animations to keep you satisfied for a while, but you can only use the ones that are in Flower Girls themselves and cannot expand them with animation packs (At least as far as I know). No monster/creature animations whatsoever, not as many tools, and no specific fetishes.

[Osex](#) - A little harder to install/get used to than flower girls (Don't get me wrong, it's still really easy). Has an interactive element to it where they make you feel like it's a simulation and you get to control speeds/actions yourself, which is completely unique to this mod that you won't find in flower girls or sexlab.

I don't believe it has as many animations as flower girls, and similarly, you cannot expand them with animations packs. No monster/creature animations whatsoever, no specific fetishes, and no tools to adjust scenes and stuff.

Sexlab- most versatile and widespread with the most mods, animations, fetishes and tools. Any sexual mods made in the future will most likely be for sexlab.

However, it is also the most difficult to install, and you will probably experience the most glitches/issues using sexlab than any other sex mod. That's its biggest downfall, But hey, that's what this guide is for.

So there are your options. If you decide to go with Flower girls / Osex, then follow the instructions on their mod pages, Skip the rest of this part, and just skim the other parts to see some bonus mods I recommend that are optional. And then you are done!

The rest of this guide is for Sexlab, and goes under the assumption that you decided to install sexlab.

42. [Sex Lab Framework](#)

The foundation and groundwork for sex in Skyrim. Make sure your mother is not in the room when you install this.

43. [Sexlab Aroused Redux](#)

Implements an arousal system for sexlab, to be honest I never really use it, but this is needed for creature framework.

44. [Creature Framework](#)

The foundation and groundwork for creature sex in Skyrim. Make sure the FBI is not in the room when you install this.

45. [SexLab Animation Loader \(SLAL\)](#)

IMPORTANT: This will be in the MCM in the Skyrim pause menu. **In order for animations to work you will have to both: update FNIS AND register them in the SLAL tab in MCM everytime you install an animation pack.** Adds another menu in

MCM that you need to access to register animations from animation packs you will download later.

46. [Schlongs Of Skyrim \(SOS\)](#)

Adds those juicy, meaty, large schlongs to male characters.

47. [More Nasty Critters and Hentai Creatures \(Grab both files\)](#)

Adds the creatures and animals that you can have sex with make sure you grab both files!

48. [Matchmaker](#)

Makes it easier to start scenes.

49. [Baka ABC \(Animated Beast Cocks\)](#)

Make sure this overwrites any other animal schlong mod (more nasty critters). This allows animations on creature peepees.

50. [Sexlab Animation Packs](#)

This guy converted a ton of animation packs from LE to SE. The mods you downloaded up until this point will have some animations already pre-equip, but you expand them using animation packs like these. [Anubs animations](#) and [Billyys animations](#) are the ones I use the most in my videos.

You're in the homestretch at this point. These are the next steps.

- Run FNIS after you downloaded all the animation packs you wanted.
- Go in game and wait a few minutes for the MCM to register any new mods
- Go to the sexlab MCM and press the "Install" option. Close all menus and wait in game until you get a notification at the top left of your screen saying that it has been installed.
- Go to the SL Anim Loader MCM and you will see an option to "enable all animations" and select it. This could take a few minutes, it's normal. Then press the "register all animations" option. Depending on how many packs you installed this can take like 10 whole minutes. Just don't tab out or close the menu until you get the confirmation message that it worked.
- If you did everything right, go to your spells and equip the "Mass matchmaker self" and "Mass matchmaker target". Use the first one on yourself then use the second one on an NPC. Then the two of you should start having sex after a few seconds (your game will be kinda wonky and maybe even lag a bit before the animation starts, this is normal). If those spells didn't work, try the sexlab debug spells instead.

If you also wanted creature sex then

- go to the sexlab MCM and find the "allow creature animations" option and select it.
- go to the hentai creatures tab in MCM and select "dump spells on you".

- If you only want the creature to have sex with you then you can toggle those options in the hentai creature MCM (otherwise, sometimes when you try to mate it may wonder off and have sex with a nearby NPC instead of you).
- Go to your conjuration spells and summon your choice of creature, press the talk button on it and select mate.
- If your creatures have erectile dysfunction or have wonky schlongs that's a common issue and there is a fix for that in the "common issues" section of this guide further down.

If something isn't working or you are having issues, I have a "common issues" section further down here.

Before you close this PDF make sure you:

- Play around with sexlab settings and other settings for mods in the MCM to set up hotkeys and stuff. Trust me, you will thank me.
- I have way more mods down from here, be sure to check em out.
- Go through the nexus mods website and see what else you can find, this is just the beginning.
- If you found this guide helpful please consider supporting me or watching my videos :)

My Videos

[Lustful Luna's Pornhub](#)

My Patreon

[Lustful Luna's Patreon](#)

Part 6 Integrating More Sex into Gameplay

Some more mods I think are worth mentioning and are optional. Please understand that for some of the lovers lab mods you're kinda entering the "wild west" of Skyrim modding, I do not have many of them installed and thus cannot vouch on how well they work and if they are up to date. So that part is up to you.

51. [GomaPeroLand SE](#)

Very huge and beautiful location(s) for screenshots/scenes.

52. [Underground Bathhouse](#)

More than just a bathhouse, it is my favorite player home. I recommend choosing the wood version when installing. There is a [save patch](#) for this mod.

53. [Bathing Beauties Or Beefcake](#)

Another bathhouse playerhome, you can connect this bathhouse with the one above using [another mod!](#)

54. [Amorous Adventures](#)

Intimate quests with NPCs

55. [Animal Mansion](#)

Intimate quests involving creatures

56. [The Ancient Profession](#)

Adds a brothel outside of solitude

57. [Cumshot Brothel](#)

Adds a brothel outside of rифten

58. [Immersive Wenches](#)

Wenches to the world of Skyrim, with their own dialogue and some quests

59. [Slave Girls](#)

Slave houses, caravans, dungeons, etc throughout Skyrim

60. [Blush When Aroused](#)

Makes your character blush when aroused.

61. My Monster Girl mods

[Half Khajit Race](#)

[Half Dragon Race](#)

[Half Argonian Race](#)

[Half Deer Race](#)

Can confirm that these work great with 3BBB and sexlab

62. [Sexlab Privacy](#)

You and your partner will find a private place before having sex, just for the immersion

63. [Sexlab Solutions](#)

Use sex as a solution to many things in Skyrim (avoid tolls, jail etc.)

64. [Sexlab Adventures](#)

Public nudity/sex is a crime, chance of a sexual encounter while you are asleep, and other sex-related immersion stuff

65. [Sexlab Defeat](#)

Instead of dying in combat, surrender your body to your opponent

66. [Sexlab Kidnapped](#)

Potentially get ambushed by humans (or creatures) and be used for sex

67. [Sexlab Eager NPC's](#)

Inegrates more sex into gameplay basically (pay trainers with sex, followers may have sex with you after beating a dungeon etc.)

68. [Devious Devices](#)

Bondage devices and such

69. [BeeingFemale](#)

Pregnancy and such

70. [Fill Her Up](#)

Cumflation

71. [SOS Addon Futanari CBBE](#)

Title says it all

72. [Femboy Race](#)

Yep

73. [Milk Addict](#)

Lactation

74. [Cumshot](#)

Adds cumshots to sexlab scenes

75. [Yiffy Age Of Skyrim](#)

Turn everyone into furies

Part 7 Optional Utilities and more

Just some mods that I wouldn't be able to make my videos without.

76. [Sexlab Tools For SE](#)

Choose what animation plays during sex as well as its stage.

77. [Facelight SE](#)

Applies light to your character's face by a spell. I use this in every video, makes them stand out.

78. [Sexlab Extra Voices](#)

Adds more voices to sexlab, way better than the original voices.

79. [Free Fly Cam](#)

Basically upgrades the tfc command so that you can easily change stuff like angels and FOV of free cam.

80. [Expressive Female Animation](#)

Makes Female Expressions look better

81. [NPC Appearance Changer](#)

Change the look of an NPC with a preset, You can use my presets to create my characters in game if you wanted to.

82. [Lazy Followers](#)

You can make any NPC a follower using the in game MCM. You can apply my presets to an NPC, then make it a follower and you'll have my characters as followers.

83. [Simple NPC Outfit Manager](#)

Choose what NPCs wear by talking to them.

84. [Furniture Sex Framework](#)

Auto align sex positions that use furniture

85. [GsPoses and SLAL](#)

Pose mod, also has some sexlab animations.

86. [Halo Pose Mod](#)

Another pose mod that I use for screenshots

87. [Halo's Vignettes](#)

HUGE museum of screenshot locations, Halo also has a ton of other mods worth checking out.

88. [Lovers Lab content](#)

Yea there's no way I can link all the mods so feel free to do some of your own exploring on loverslab. Also check out this [massive list](#) of nsfw mods converted from LE to SE.

89. [Nexus Mods](#)

Yeah, you know you're not done yet. This guide was only for the sex stuff, visuals, and integration, be sure to explore the nexus and see what else you can pick up.

“Luna how exactly do you use sexlab to make those videos that look more cinematic?”

My video process is probably way more tedious than it needs to be but here is a rundown in the secrets of how my videos look the way they look.

- I use console commands to control weather, time, and to delete things I don't want in the environment.
- Most animations have pretty decent alignment, but I sometimes manually tweak them in the sexlab MCM to get those near perfect collisions.
- I use free fly cam to get good camera angles.
- I use [opparco command](#) to make the facial expressions my characters have during scenes.
- In some of my videos the audio is completely manually added in by me.
- Facelight does wonders to your character during scenes as well.

- There are a ton of animations and animation stages, you guys only see the best ones in the video that I choose through Sexlab Tools.
- Oh, and a ton of trial and error of course.

Common Issues

If you're having issues and something isn't working try downloading loot

<https://www.nexusmods.com/skyrimspcialedition/mods/1918>

This will organize your load order. I hear it doesn't work well with vortex though. Why? I have no idea, I don't use vortex.

Do your creatures have erectile dysfunction?

This is a very common issue and I have no idea what causes it but there is a fix.

Download and install More creatures

<https://www.loverslab.com/files/file/6301-sexlab-more-creatures-se-2019-10-28/>

Then download and install More nasty critters always erect

<https://www.loverslab.com/files/file/12880-sexlab-more-nasty-critters-always-erect-se/>

Then load the game and test it out, if it's still wonky or not working, try disabling SOS.

The Werewolf/Werebear Schlongs are tripping out and not working properly

Not entirely sure what causes this, because I think SOS and ABC are supposed to be compatible with each other, but I found out that disabling SOS fixes the issue.

How do I start a threesome or fourway?

Use the spell "Mass Matchmaker Gangbang Self" and a gangbang should start with the actors around you, I HIGHLY recommend going through the MCM for Match Maker and setting the "Manual selection mode" on so that you can choose your actors **this option requires UI Extensions from my list of mods**. Same goes for animals. Only works if

you have a valid animation for the actors you selected. For example, if you selected female, male, then press end a threeway will occur with the female, male, and your player character. If you select female, male, horse, dog, skeever, then press end probably nothing will play because you don't have an animation that involves all those actors. Sometimes, even when you have the manual select option, all the NPCs in the room won't show up in the menu. Pretty sure this is just Skyrim being Skyrim. Keep trying, or if you really want, you can spawn your actors indoors and try that. That's what I typically do with my vids.

If a specific mod isn't working or having bugs

Reread the steps here and the instructions on the mod pages and make sure you have all the requirements. Worst case scenario uninstall the certain mods and reinstall and try again. **If you have modded Skyrim previously and then decided to follow this guide, there's a good chance that one of your mods that is not in this list is conflicting.**

If that is the case and you want to keep your mods, you can use this [tool, SSEEdit](#) to detect conflicts. If you are using LE, this is the LE [TES5Edit tool](#). And [this guide](#) can help you with installing/using the tool.

If your character/creature is standing still and not doing anything during sex and you cannot cancel the animation or end it.

You did not run FNIS correctly is most likely the problem or you did not register and enable the animations in the SLAL menu in the MCM. It could also happen every now

and then for no reason at all, in which case I just restart the game and try again. But if it happens way too often, it's most likely FNIS or SLAL.

If your body disappears except for the arms and head during an animation

Go to sexlab in MCM and make sure "equip nude suit" option is not checked.

If your characters and npcs are not aligned well during an animation

Things like high heels or some leg armors that make you taller can unalign the actors in the animation so be sure to remove them or sometimes they do that for no reason at all so if at any time if they are unaligned then stop the animation, go to MCM-> Sexlab-> player hotkeys and set up a hotkey for "realign actors". Then whenever they do that again, hit the hotkey. Animations are selected at random, so if you downloaded a pack that has a furniture animation, it may play that animation even when the furniture is not present. As a result, your actors could be banging on top of a table that isn't there and it would look weird. I recommend you go to the video making part of this guide to see the other mods, the one in particular you want is "Se SL Tools" .

If your actors merge together and do a dry humping animation instead of a scene

Read above. You may need SE SL Tools

Lip sync during scenes doesn't work or is wonky

Yep there is a fix for that. Read this [forum](#) and replace the files in your sexlab folder with the ones provided here. Instructions are on the forum.

Creature Framework doesn't show up in the MCM or won't stop initializing

Yeah, that happens. To be honest you don't really need it in the MCM. But if you really want it, you'll need to start a new save and it should configure just fine and show up in the MCM. Same if it won't stop initializing.

Female takes the male position or vice versa

You can toggle a hotkey to swap actor roles in the sexlab MCM when that happens.

Don't see your issue here?

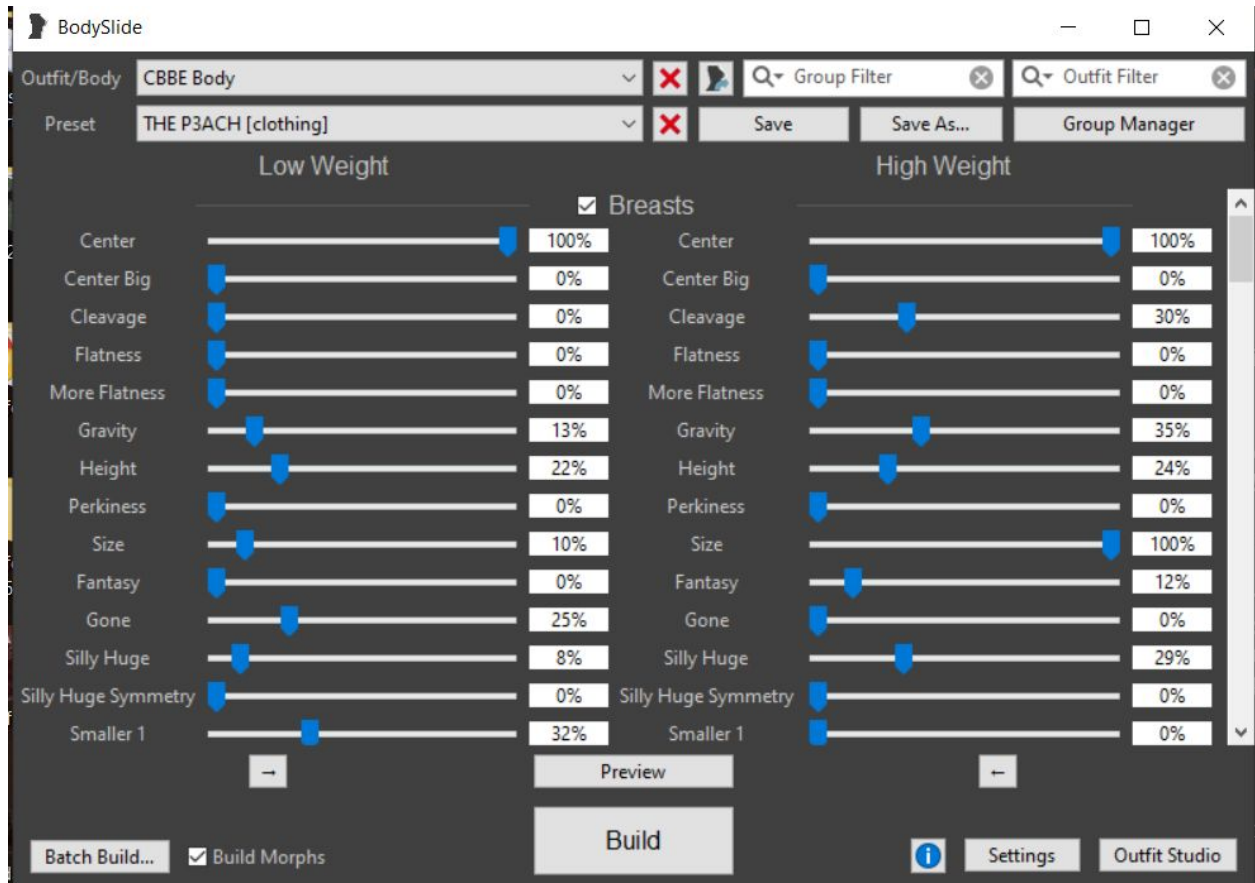
You're gonna have to do your own troubleshooting and research my friend. Checking out the forum posts for the mods having issues is a good way to start as it's possible that someone else had the same issue as you.

Bodyslide and outfit studio tutorial by Lustfulluna

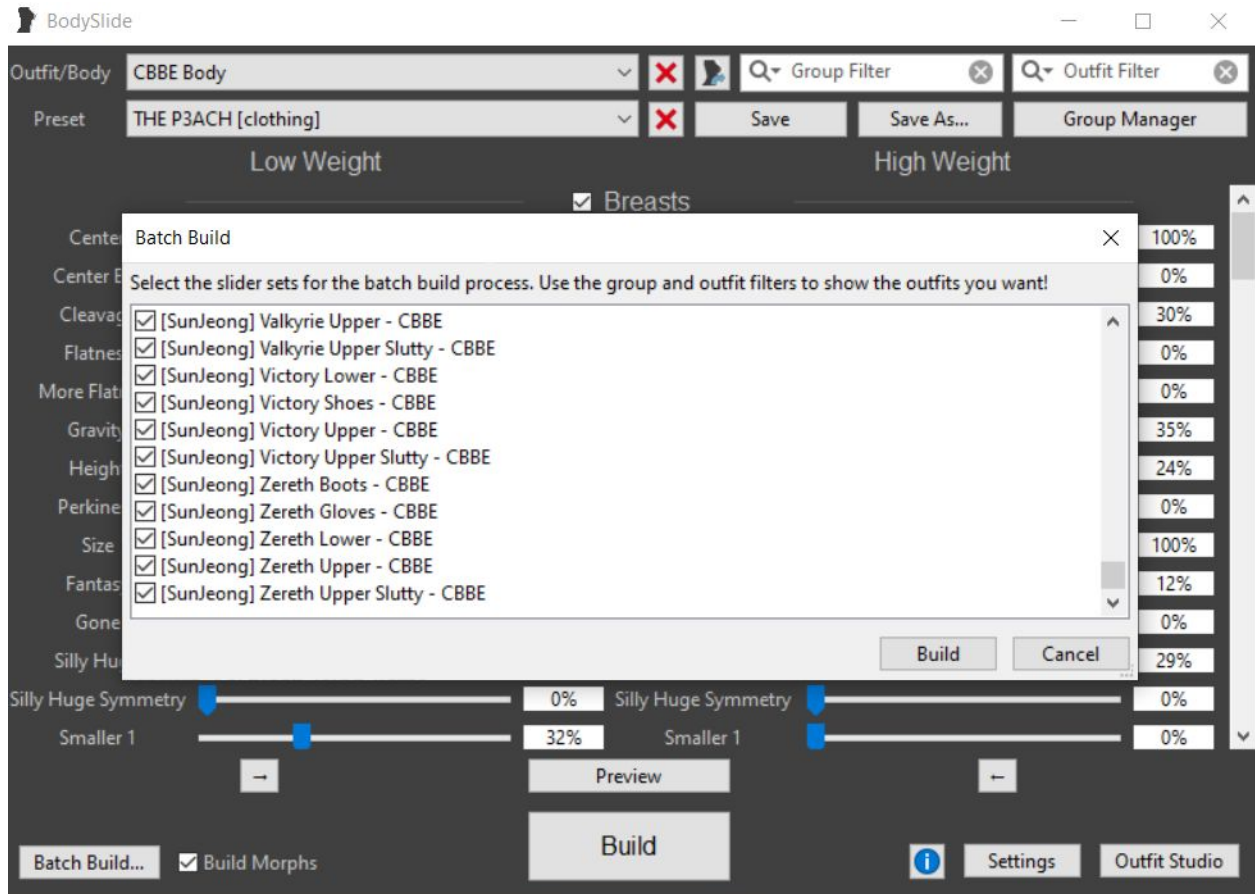
This is a step by step guide on how to install my bodyslide preset and outfits. **This is specific to my mods in the guide**, but other mods follow a similar path.



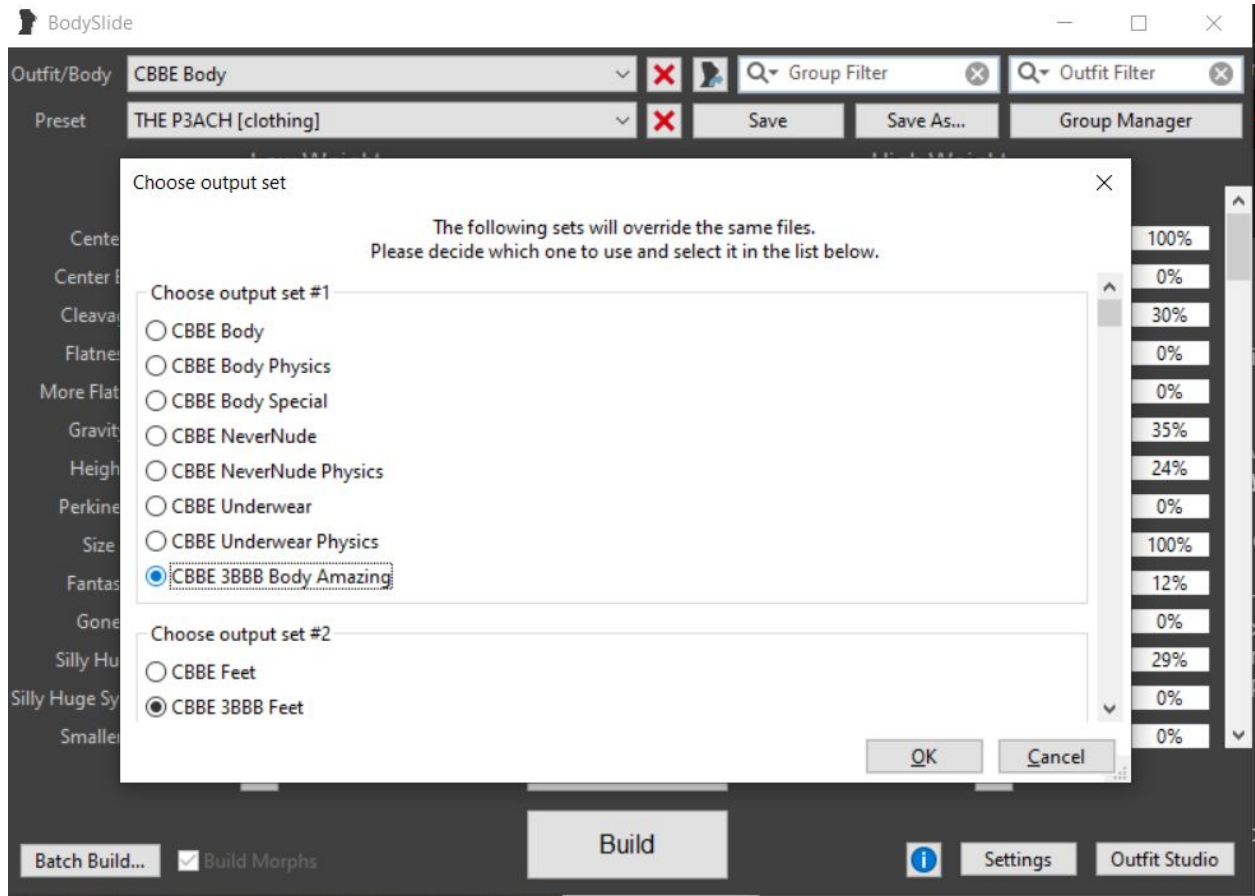
Open the bodyslide program, either through the data folder where you installed it in, or through your mod manager



Make sure that your outfit/body box has “CBBE Body in it. In the preset box, select “The P3ach Clothing”, and in the bottom left, click on the “Build Morphs” box. Then click on “Batch Build”



This is what the box that pops up kinda looks like. They should all be autochecked for you already, just click on build.



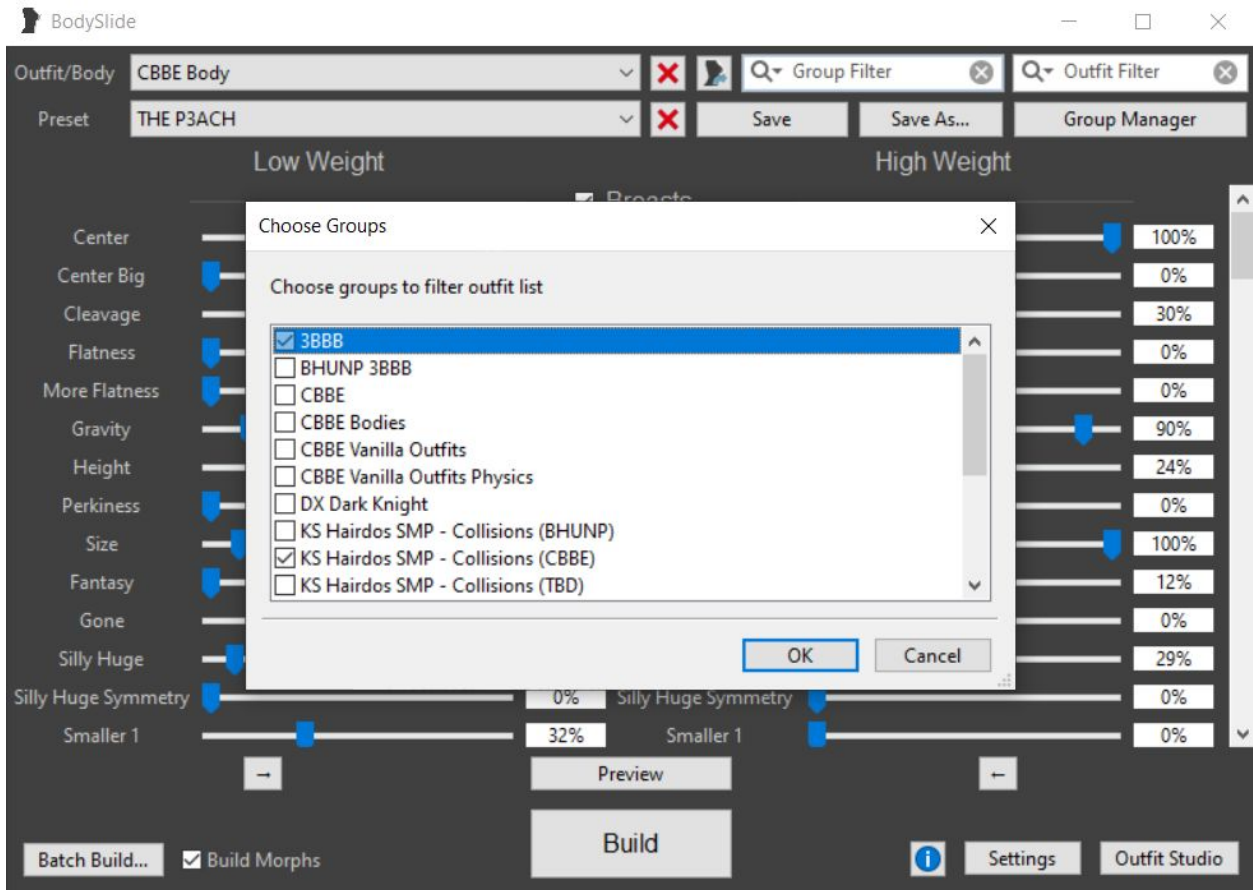
Next this box might pop up, if it does, just make sure that the first 4 or 5 output sets have any option that has 3BBB in its name selected. 3BBB Body, 3BBB Feet, 3BBB hands etc. Don't bother with the other 500 or so options after that. Just the first few that have 3BBB in their name. Then hit ok.



Great. Next is super easy. In the preset box select “The P3ach” and make sure your outfit body/Body box is still “CBBE Body”. Then Just hit the big “Build” button on the center bottom.



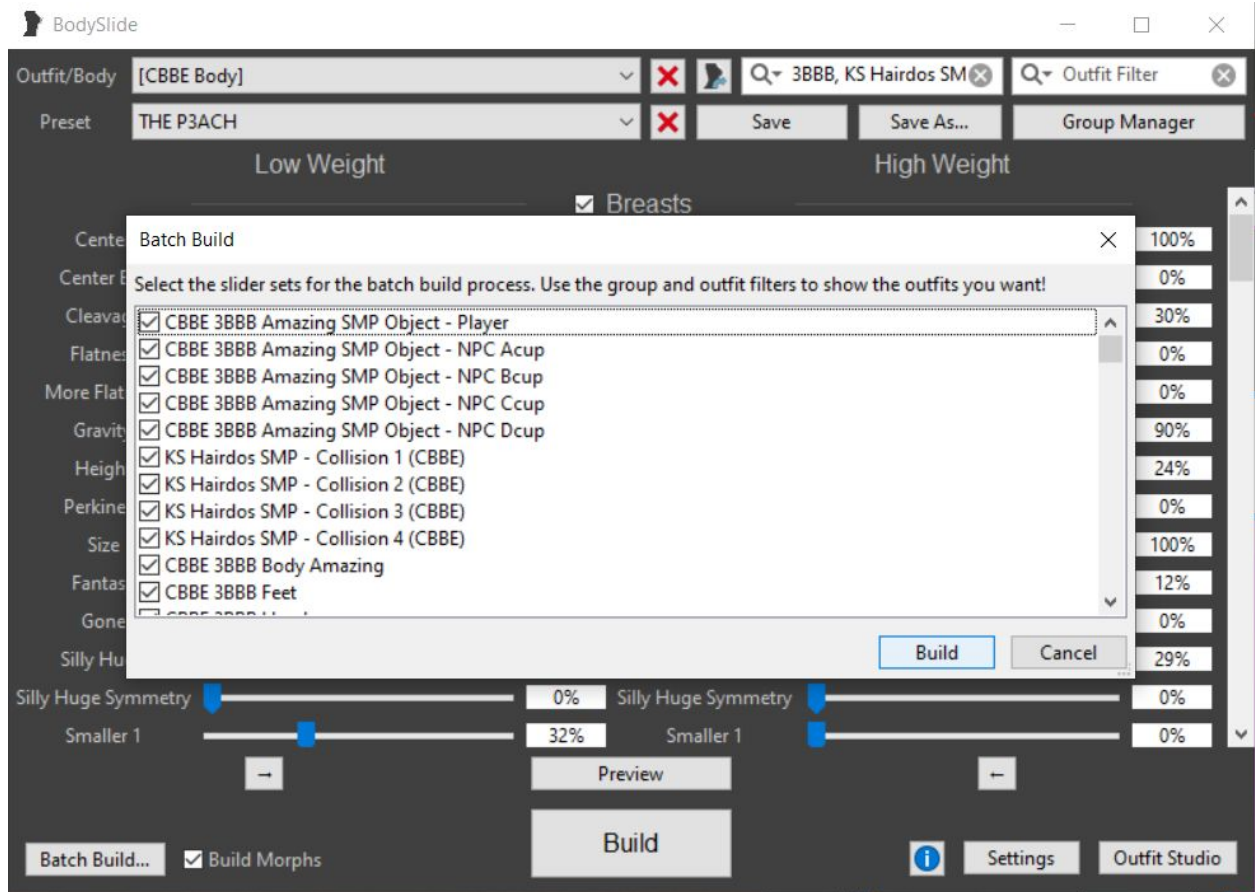
At the top right there is a "Group Filter" box. Click on the little magnifying glass and click on "Choose groups"



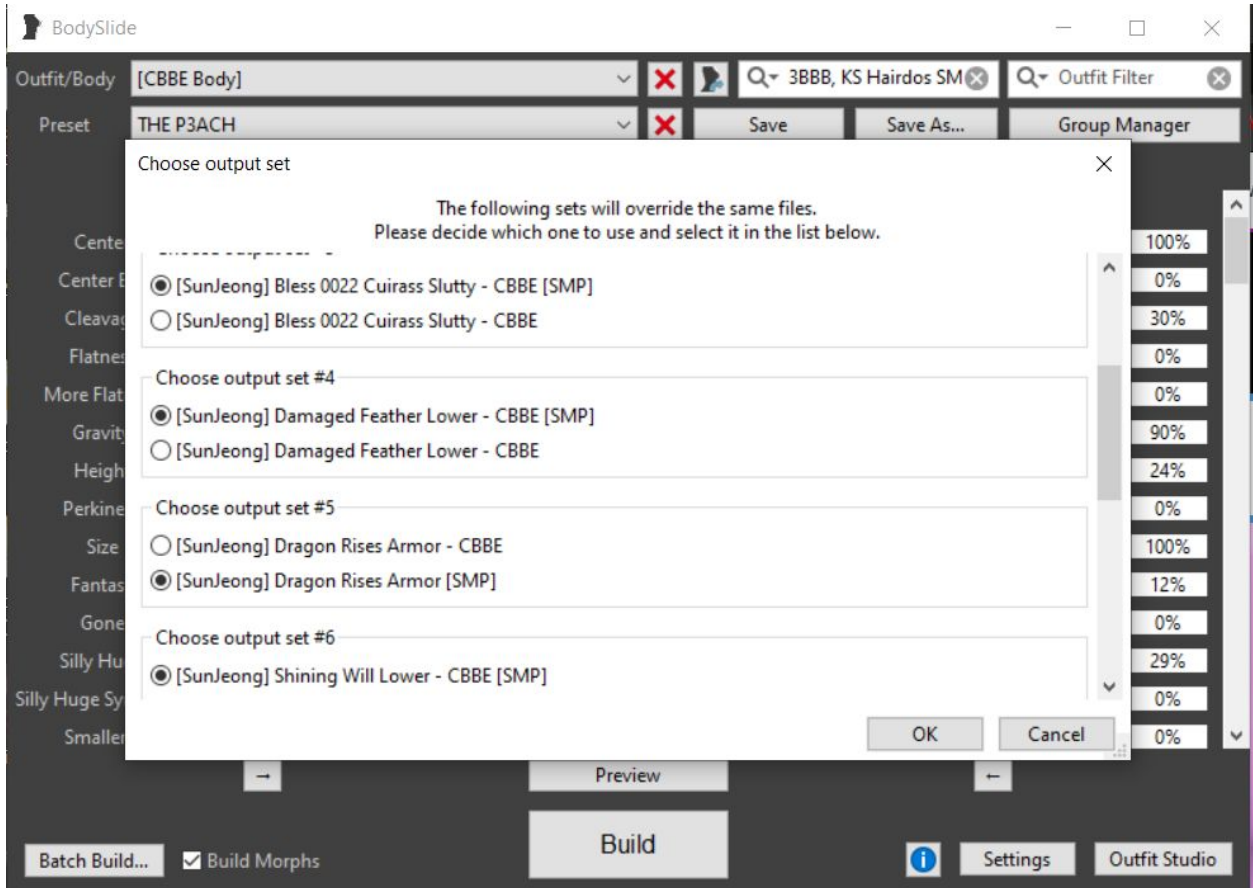
Select 3BBB, and if you downloaded my ks hairdos SMP mod select that as well, and “[SunJeong] Nimirim Collection Group” AS WELL AS “[SunJeong] Nimirim Collection Group- Nipples Exposed (Breast Supported)” Those are two separate boxes with similar names. Also “TAWOBA Remastered [3BA]” and that should be it.



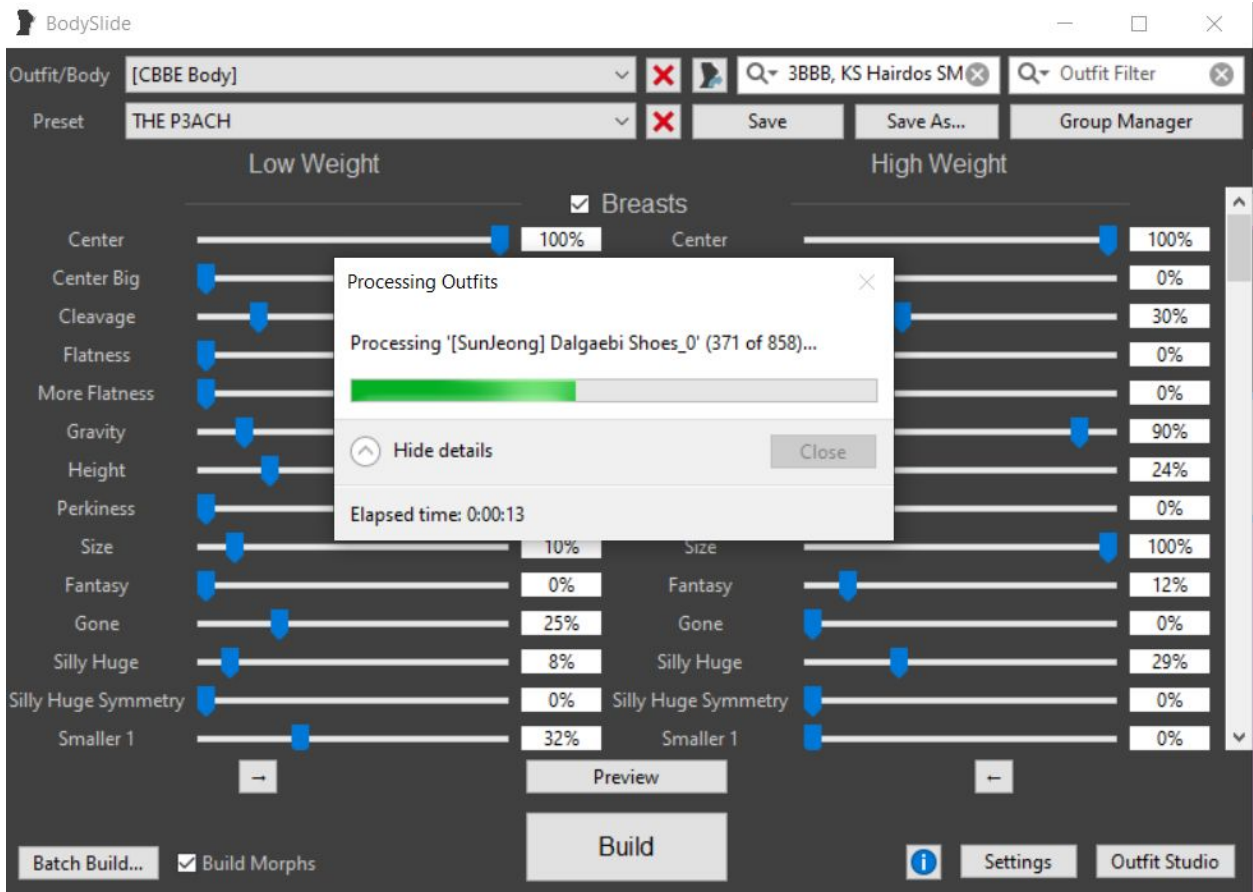
Once you hit ok they should all be bunched up in the box like shown. Go ahead and click on “Batch Build”



Click build when this box comes up.



A few of the nimirim armors have an SMP option, so just select SMP for all of them and hit ok when this box comes up.



That's it, you are done. So what this did is

Apply The P3ach to your naked body as well as 3BBB Physics.

Built TAWOBA to The P3ach preset and applied 3BBB physics to them

Built The Nimirim Collection clothes to The P3ach

Built KS Hairdos to your body preset, so that hair collusion is just a little better and specific to your body.