

CRT

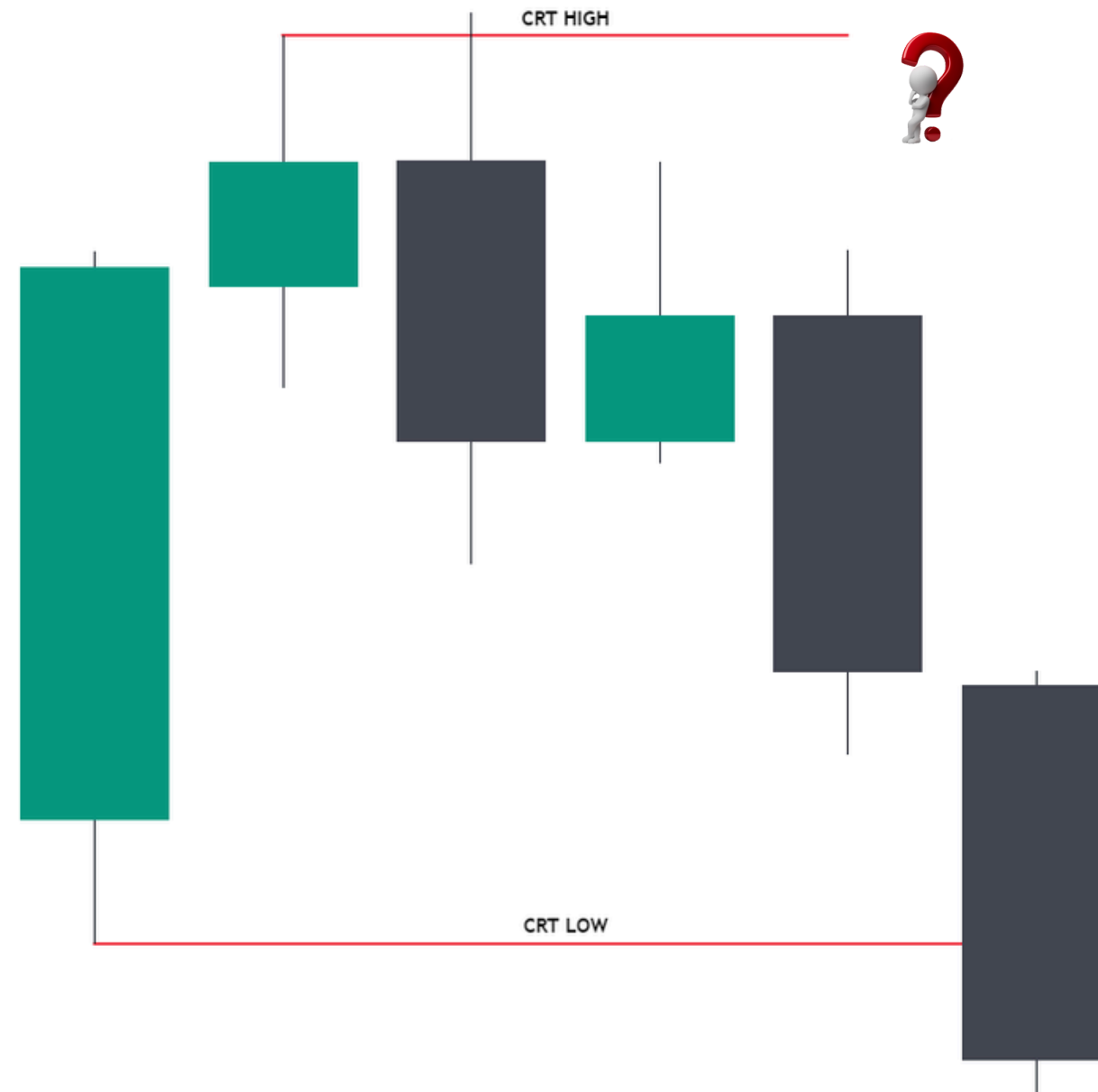
High Probable setups at H4- 159

WEEKLY REVIEW

AUG 19- 23

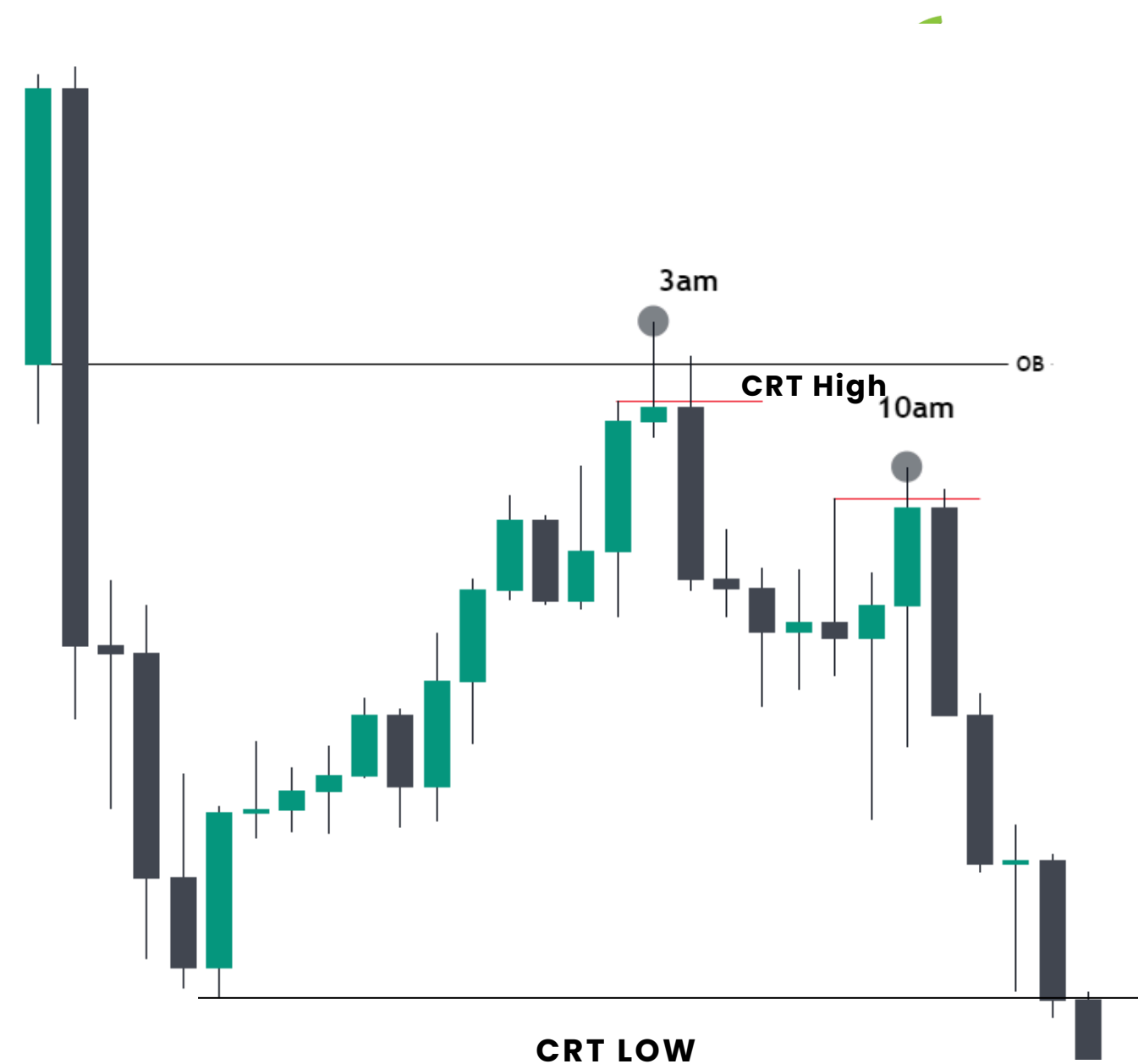
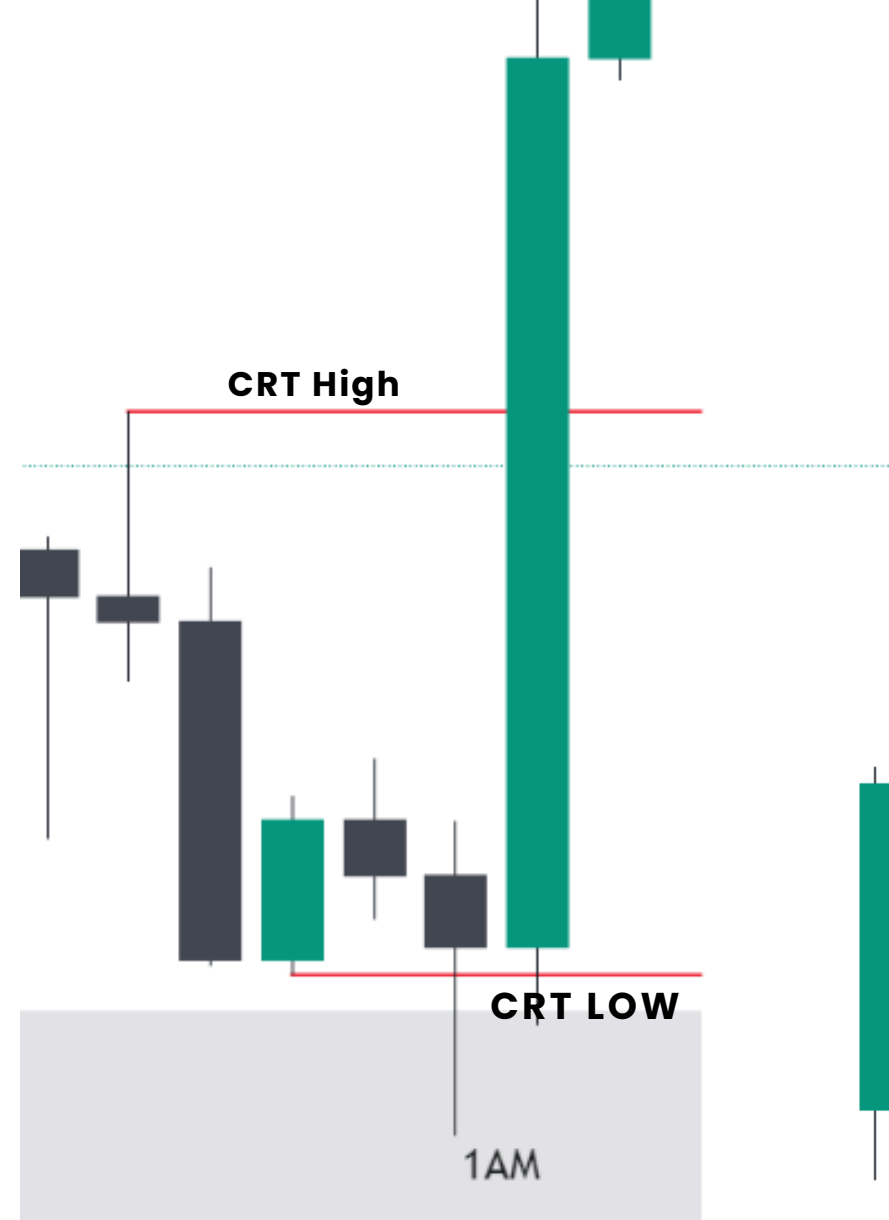
XAUUSD

EURUSD



CANDLE RANGE THEORY

- Each candle is the range. Every candle has its own po3.
- With respect to HTF PD arrays Look for 4hr candle forming at specific time of the day.
- Forex: H4 CANDLE- (1am-5am-9am EST) 🔑
- Index Futures: H4 CANDLE- (2am-6am-10am EST) 🔑
- Pro trend- can target along with HTF
- Counter trend-less probable, target the 50% of range
- Wait for candle to purge the high/low of the 1st candle and then close inside the 1st candle range at the specific time and look for entries in LTF (TSQ)

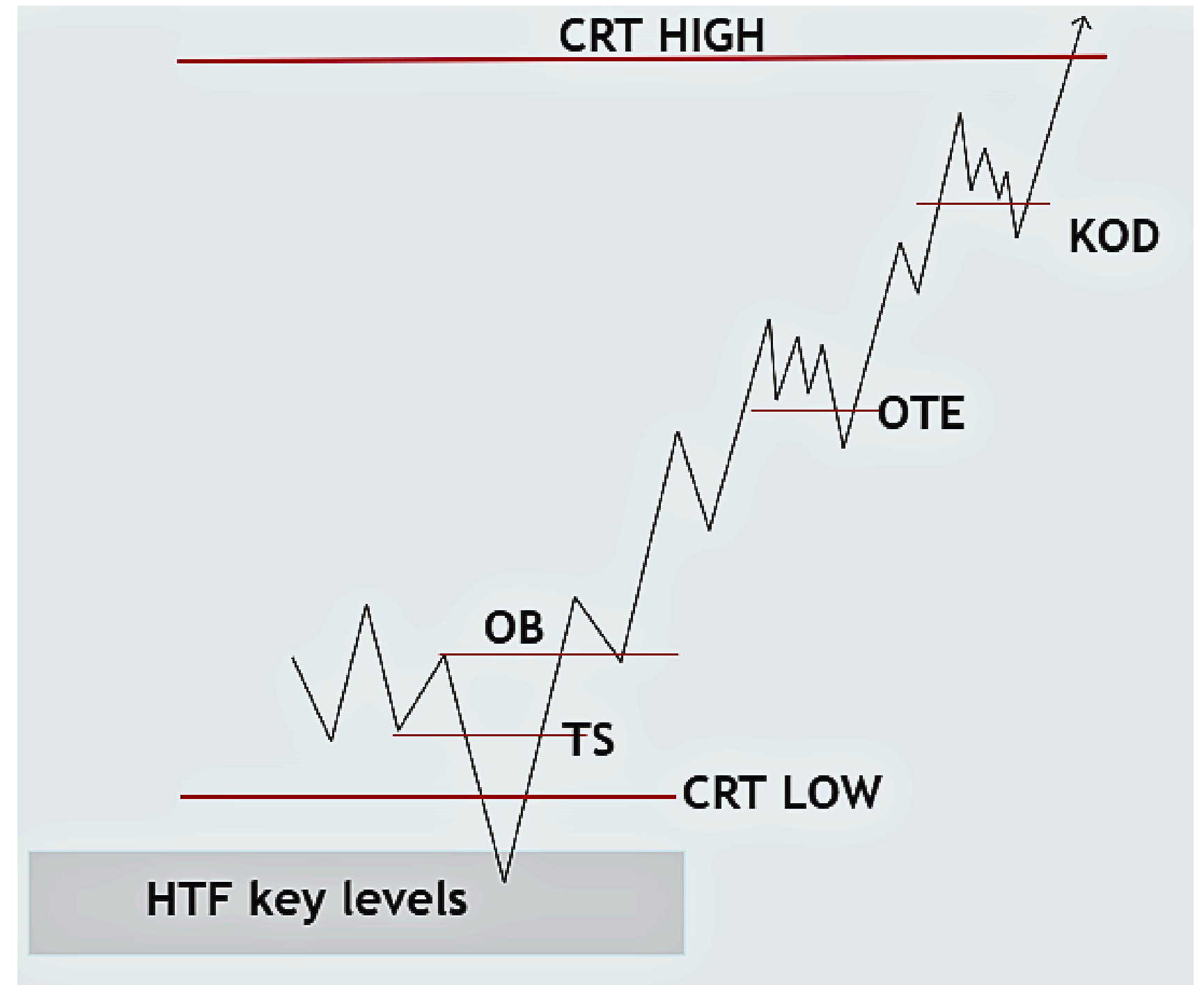


TIME FRAME ALIGNMENTS

<u>HTF (CRT)</u>	<u>LTF (TSQ)</u>
WEEKLY	4HR
DAILY	1HR
4HR	15MIN
1HR	5MIN

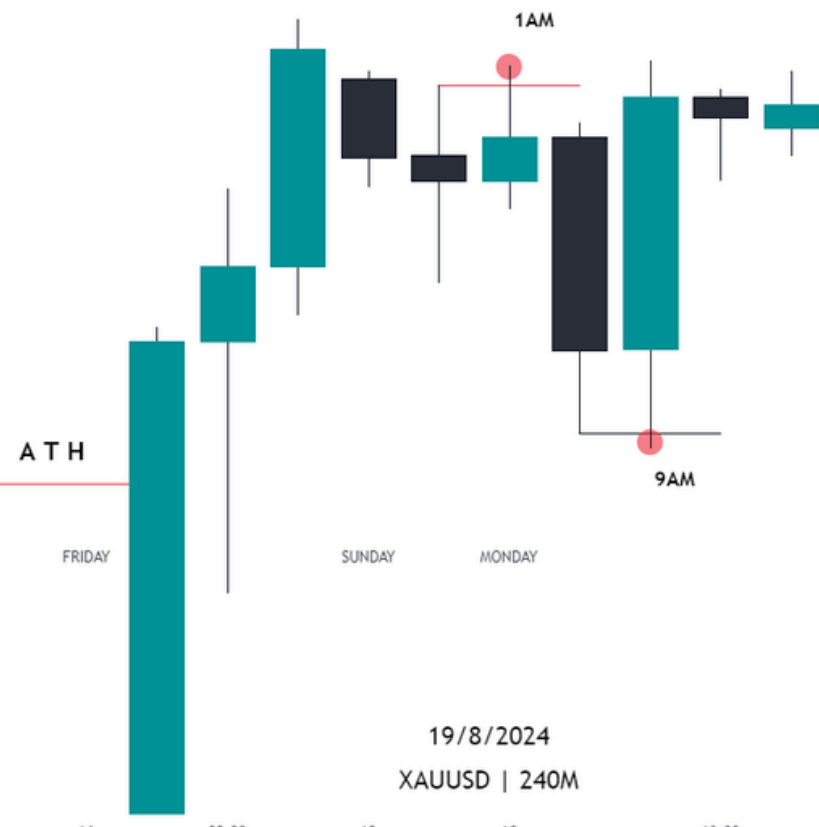
The LTF execution TSQ (The Sequence) include:

- CRT Turtle Soup
- CSD
- OTE
- Continuation
- KOD (Kiss of Death)



Review on XAUUSD

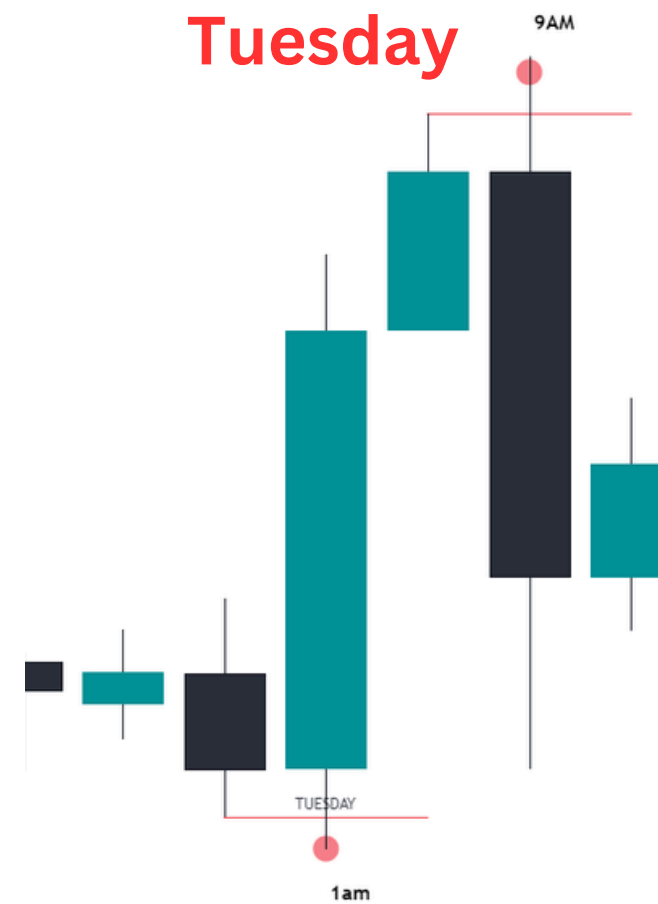
Monday



19/8/2024
XAUUSD | 240M

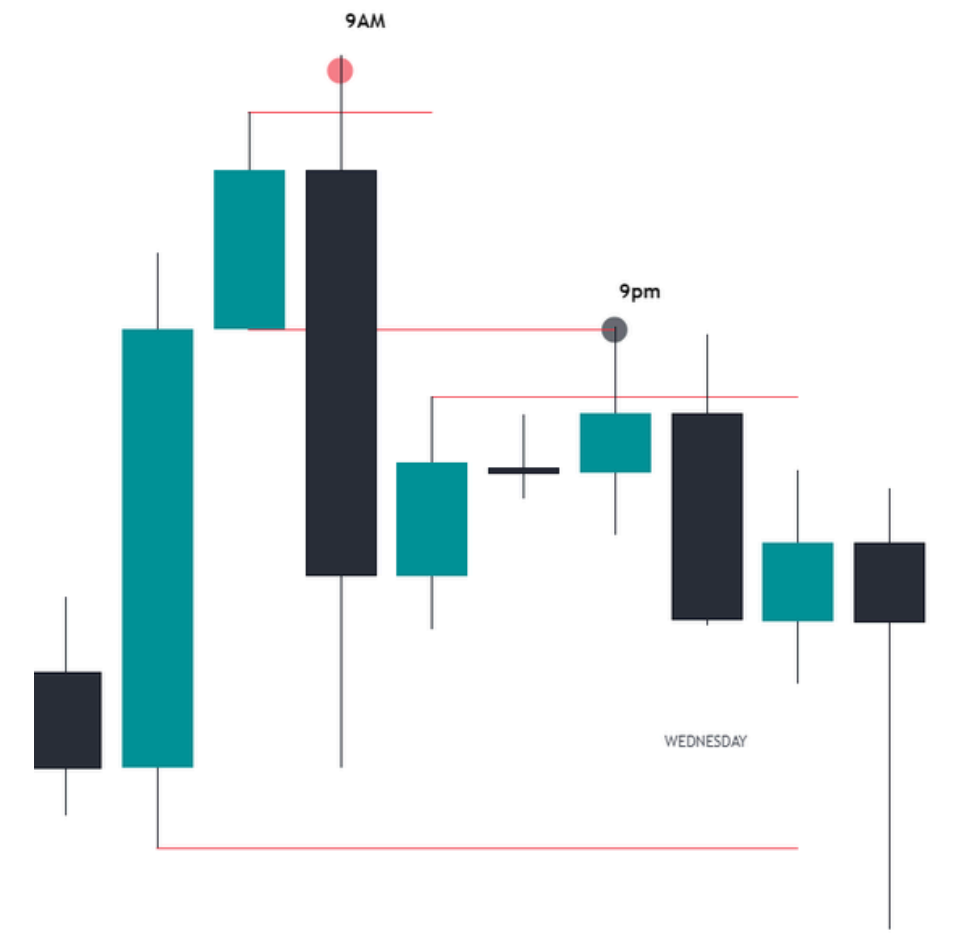


Tuesday



20/8/2024
XAUUSD | 240M

wednesday



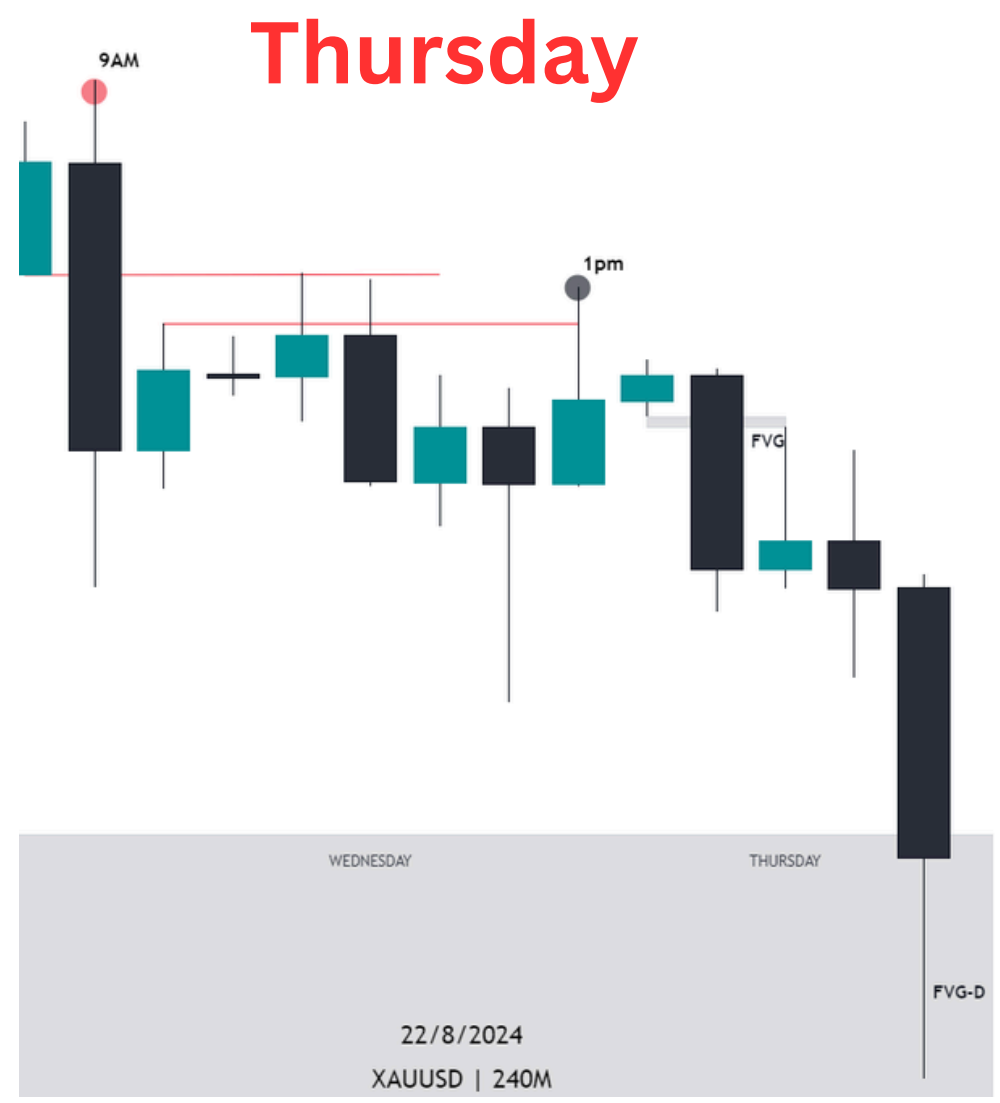
21/8/2024
XAUUSD | 240M

- Price rejecting Above the ATH
- 1am purge supports sells
- 9am purge supports buys
- Monday purge -low probable

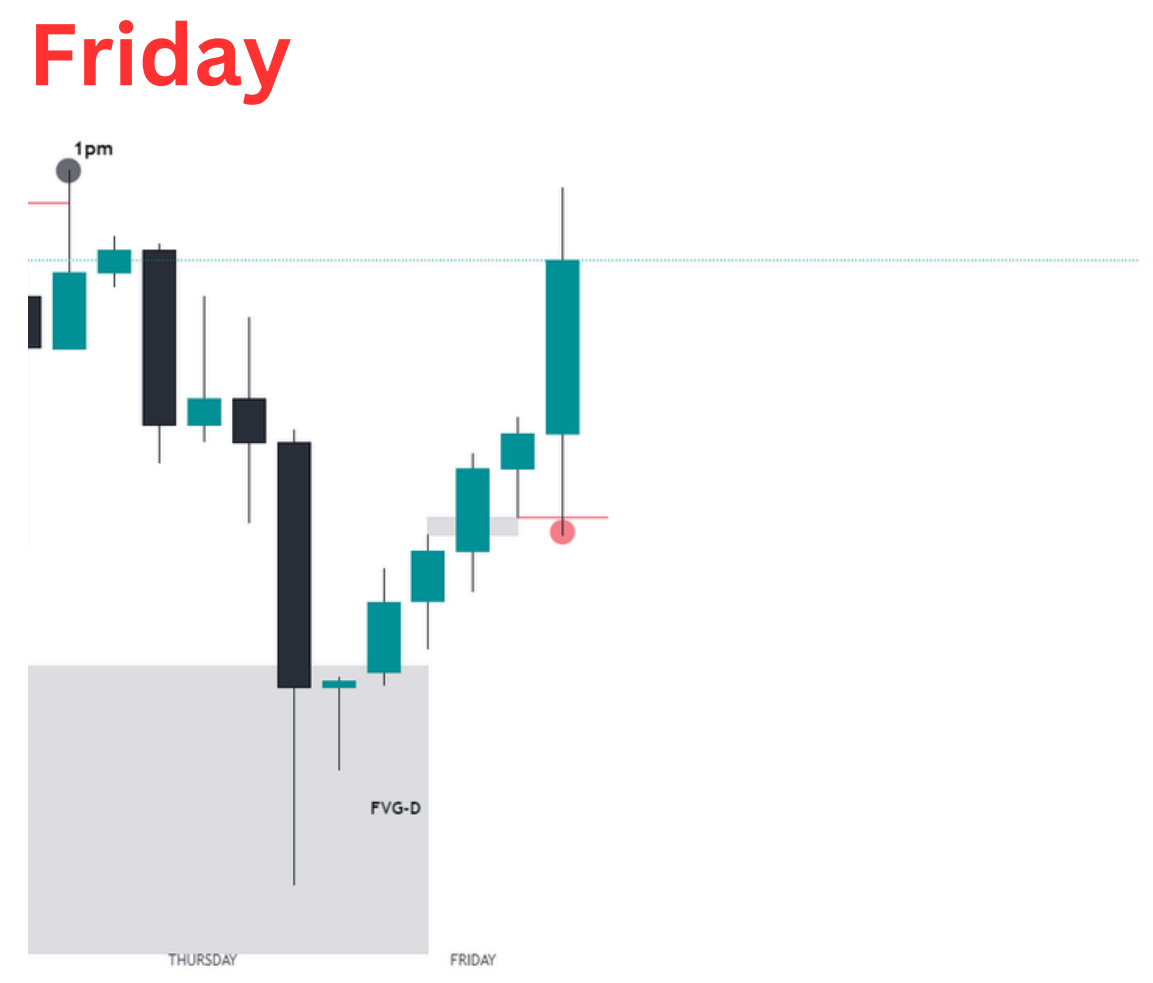
- 1am purge supports the BUY
- buys above the highs risky
- 9am sells - CRT high to low

- Pre day purged at 9am H4 -confirms the sell.
- 9pm purge happens- CRT high to low complete

Review on XAUUSD



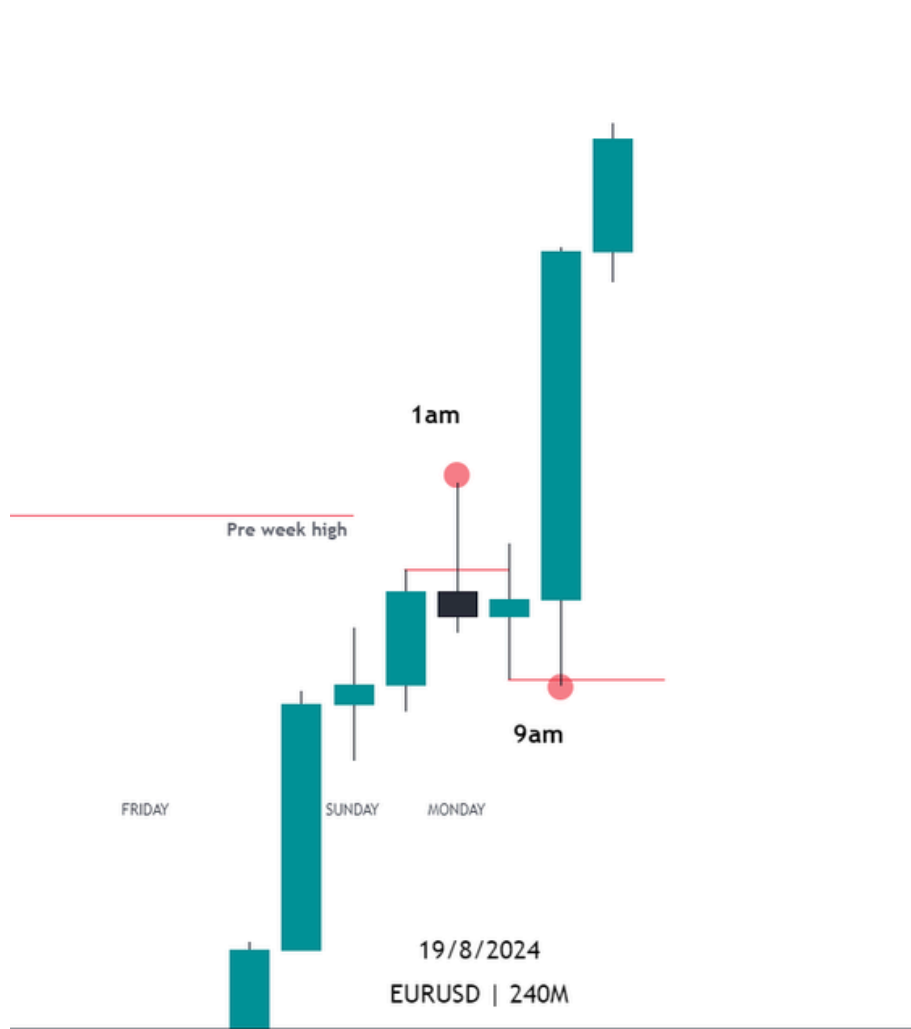
- 1pm purge supports the sell to the D_FVG
- No am purge , no trade



- 9am purge
- fomc news day no trading

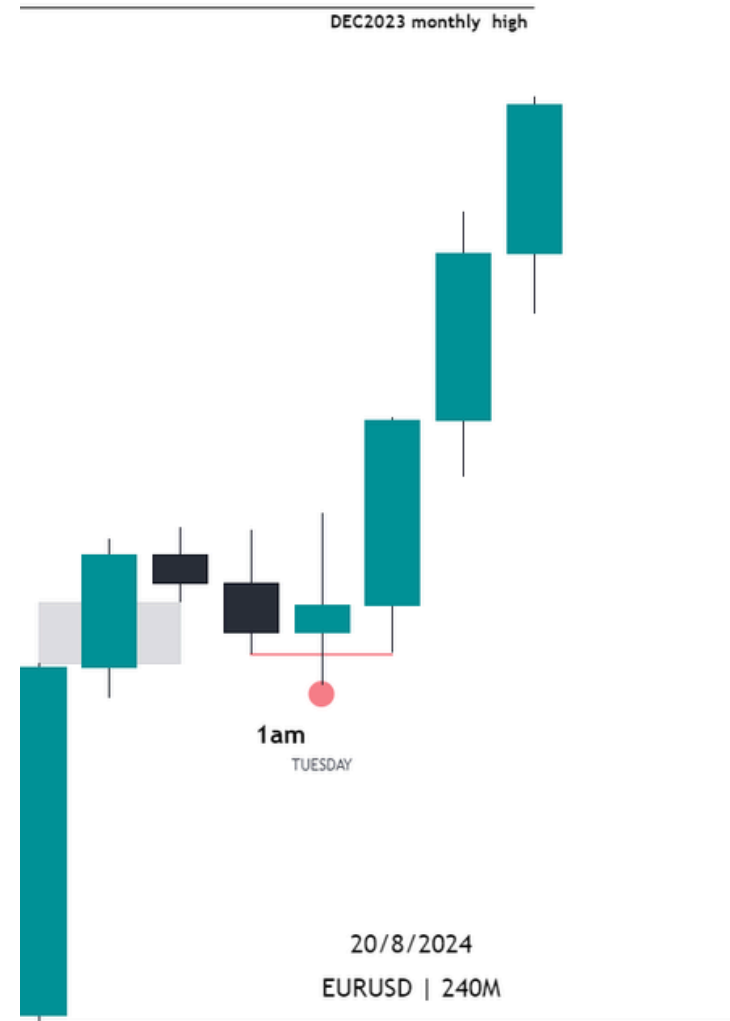
Review on EURUSD

Monday



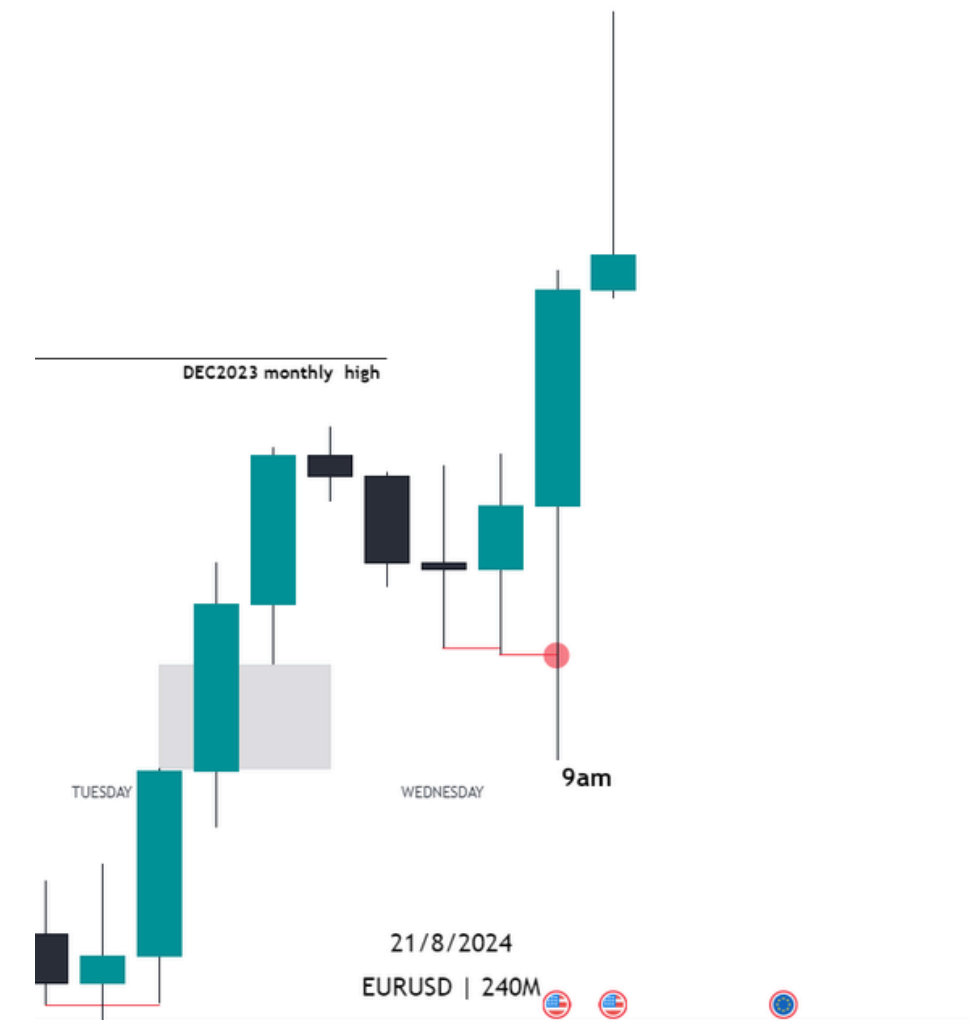
- Bullish bias for the week
- 9am purge supports buys

Tuesday



- 1am purge + H4 BISI
- Classic buy day

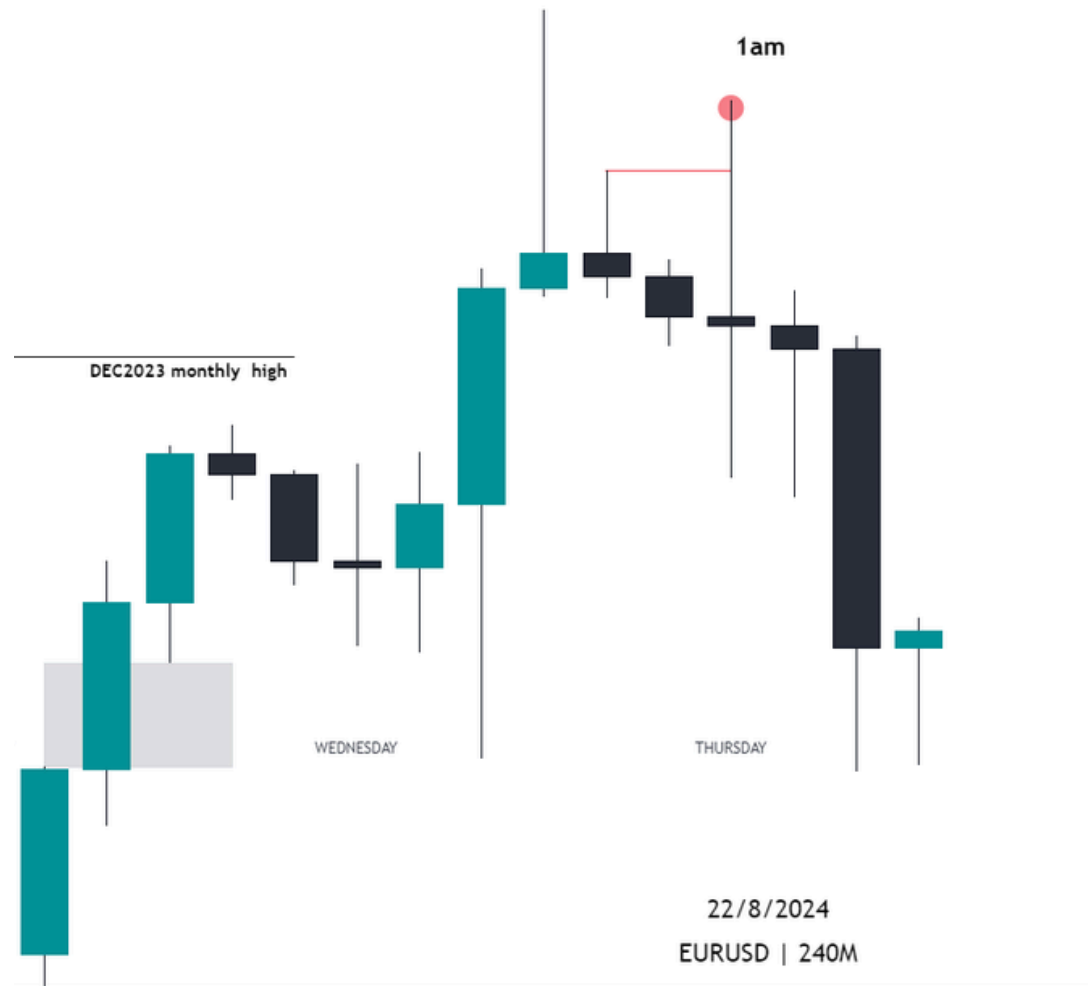
Wednesday



- 5am purge didn't work
- 9am purge is the real move
- DOL reached

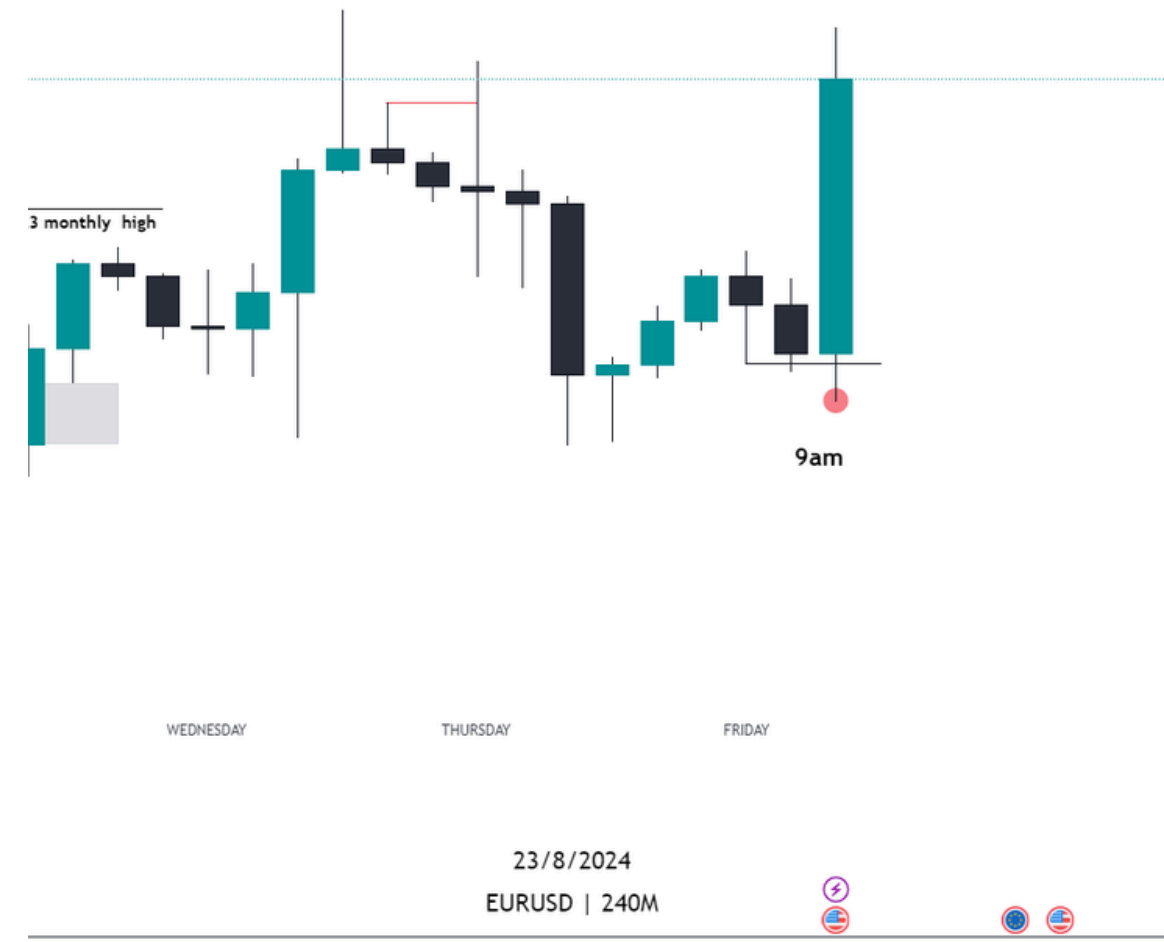
Review on EURUSD

Thursday



- 1am supports the sell
- Sells above the highs

Friday



- Fomc day
- side way until the news, no trade

 **SATYA**  
@ambeingsatya

Points to remember

- **Avoid Bank holidays(Low Probable)**
- **Avoid NFP, CPI, FOMC & PPI days.(low probable)**
- **Pattern alone never works always.**
- **Only sell at premium & Buy at the discount.**
- **Look for TS at the specific key time.**
- **Trading CRT along with HTF bias has better win rate.**
- **More the inside bars higher the probability.**
- **Book partials and Move Break even at the 50% of the range.**

