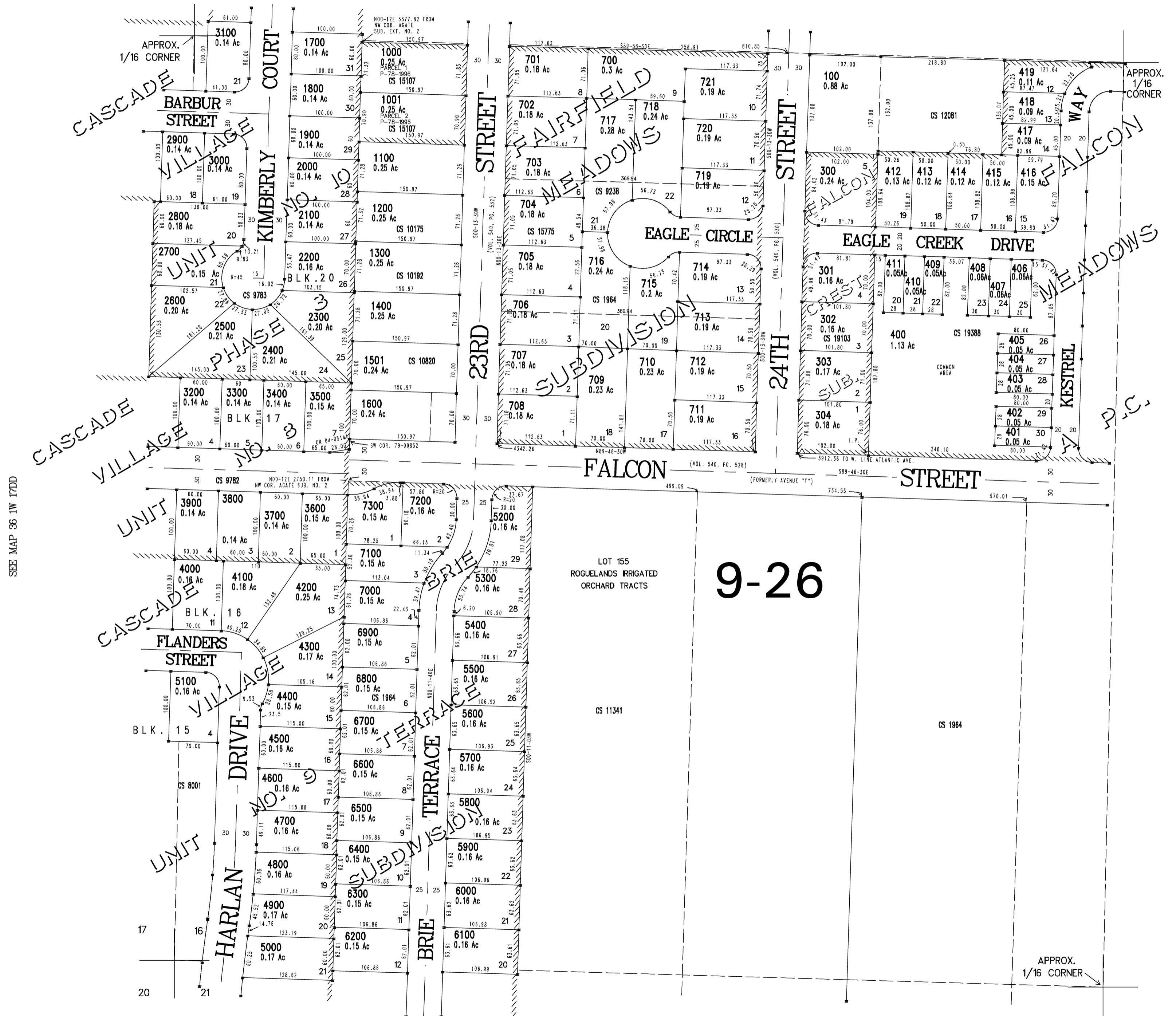


JACKSON COUNTY

IMPORTANT
THIS MAP FOR ASSESSMENT
AND TAXATION PURPOSES
ONLY

SCALE 1 INCH = 100 FEET

SEE MAP 36 1W 16CB



CANCELLED TAX LOT NUMBERS:

- 1500 ADDED TO 1800
- 800, 900 ADDED TO 700
- 200 ADDED TO 100
- 500 ADDED TO 400
- 600 ADDED TO 400

SEE MAP 36 1W 17DD

SEE MAP 36 1W 16CD

SEE MAP 36 1W 16C

METAFILE C:/WORKSPACE/361W16CC PLAT.CRA
CREATED MONDAY NOVEMBER 27, 2006 8:47 AM By JOHNSOWH

SEE MAP 36 1W 21BB

SEE MAP 36 1W 16C