

# Today

Studied 1083 cards in 2.21 hours today (7.35s/card)

Again count: **456** (57.9% correct)

Learn: **142**, Review: **575**, Relearn: **366**, Filtered: **0**

Correct answers on mature cards: 96/157 (61.1%)

## True Retention

The True Retention is the pass rate calculated only on cards with intervals greater than or equal to one day. It is a better indicator of the learning quality than the Again rate.

Past	Reviews on Cards									Cards	
	Young (ivl < 21 d)			Mature (ivl ≥ 21 d)			Total			Learned	Relearned
	Pass	Fail	Retention	Pass	Fail	Retention	Pass	Fail	Retention		
Day	316	102	75.6%	96	61	61.1%	412	163	71.7%	25	163
Yesterday	283	91	75.7%	11	3	78.6%	294	94	75.8%	25	94
Week	1490	566	72.5%	134	73	64.7%	1624	639	71.8%	175	639
Month	4671	2037	69.6%	352	211	62.5%	5023	2248	69.1%	645	2175

By default, mature cards are defined as the cards with an interval of 21 days or longer. This cutoff can be adjusted in the add-on config.

# FSRS Stats

Only calculated for cards with FSRS memory states

Average predicted retention: **87.11%**

Average stability: **23 days**

Daily Load: **780 reviews/day**

## Retention by Cards:

Total Count: **2797 cards**

Estimated total knowledge: **2436 cards (87.11%)**

Total Time: **238.9 hours**

Knowledge acquisition rate: **10.2 cards/hour**

## Retention by Notes:

Total Count: **2797 notes**

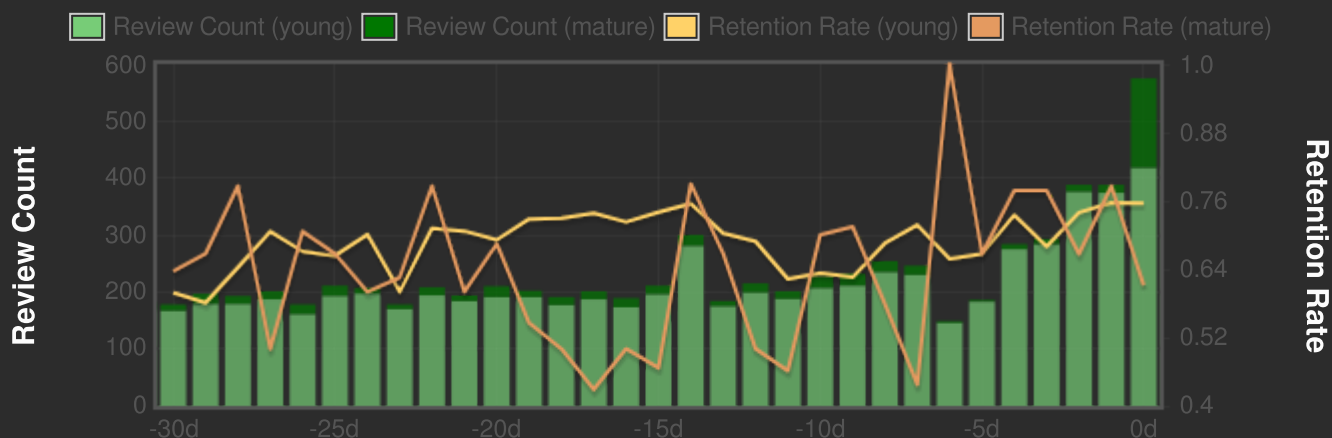
Estimated total knowledge: **2436 notes (87.11%)**

Note: Unless you have a huge backlog, the average predicted retention will be higher than your desired retention. For details, read the interpretation section.

► Interpretation

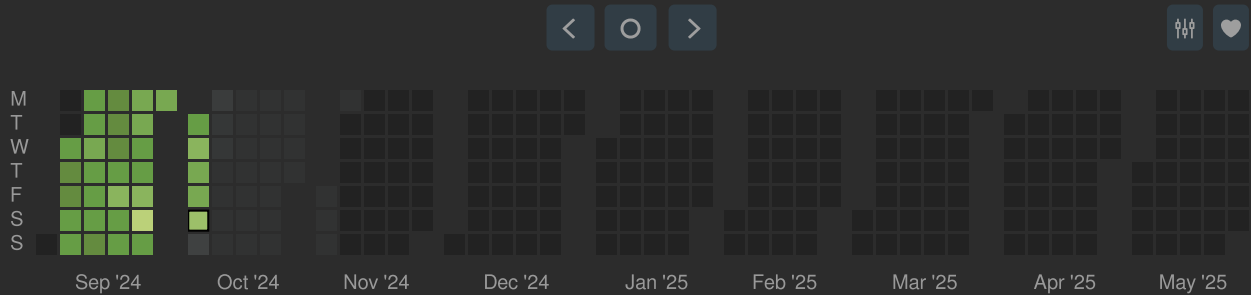
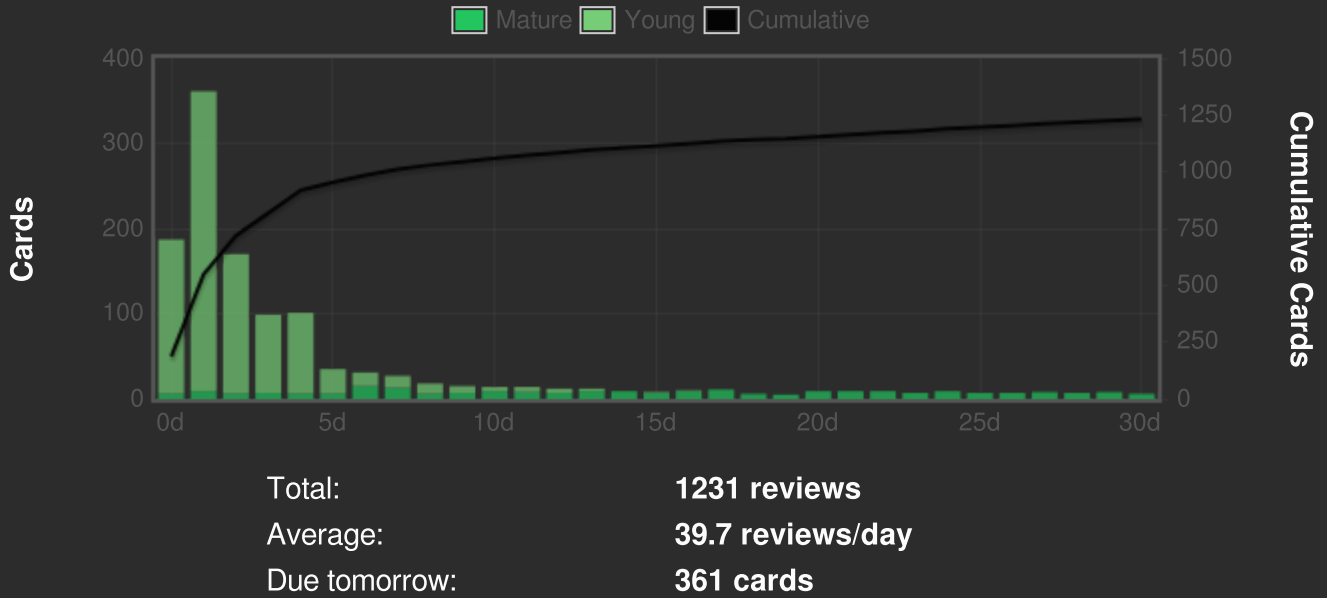
## Retention Graph

Retention rate and review count over time



# Forecast

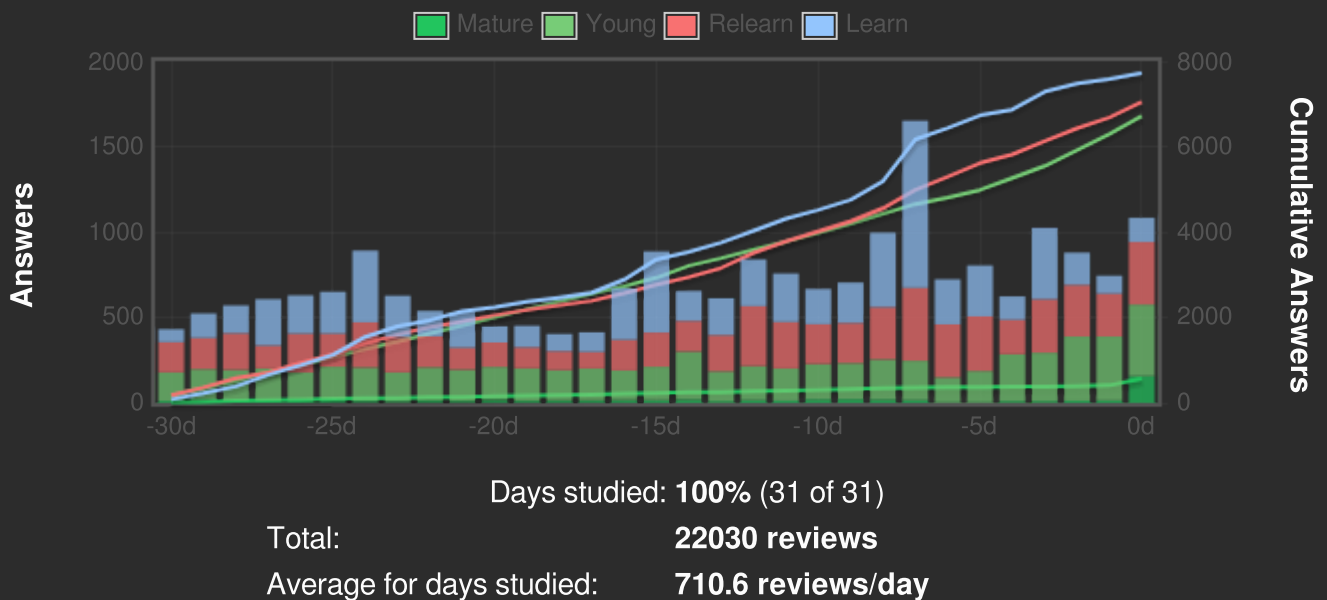
The number of reviews due in the future.



Daily average: 777 cards Days learned: 100% Longest streak: 32 days Current streak: 32 days

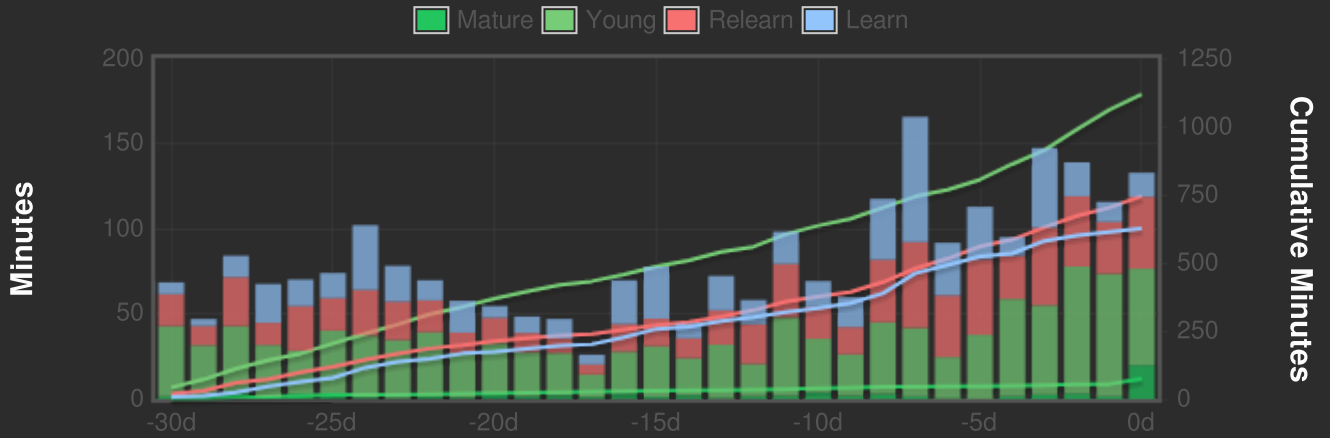
# Review Count

The number of questions you have answered.



# Review Time

The time taken to answer the questions.

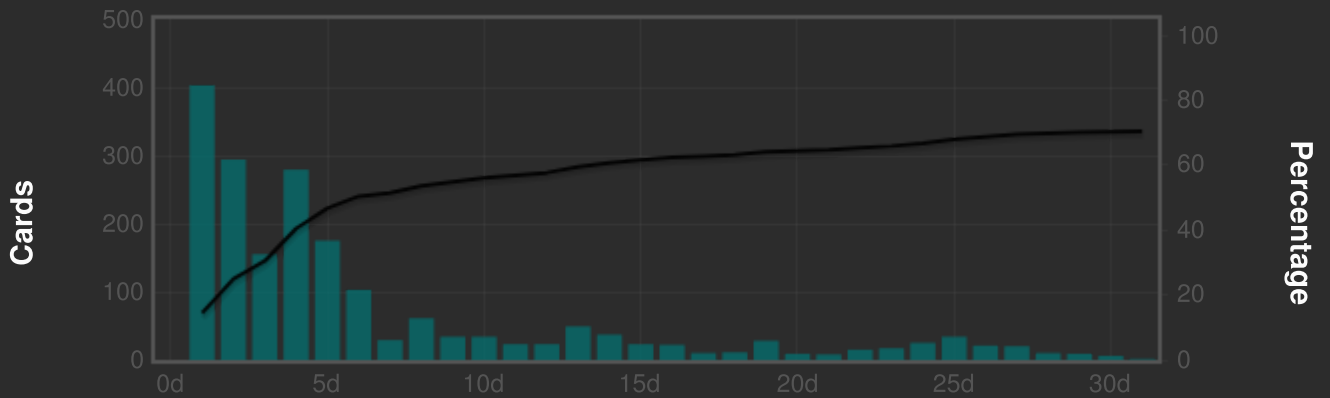


Days studied: **100%** (31 of 31)

Total: **2558 minutes**  
Average for days studied: **82.5 minutes/day**  
Average answer time: **6.97s (8.61 cards/minute)**

# Intervals

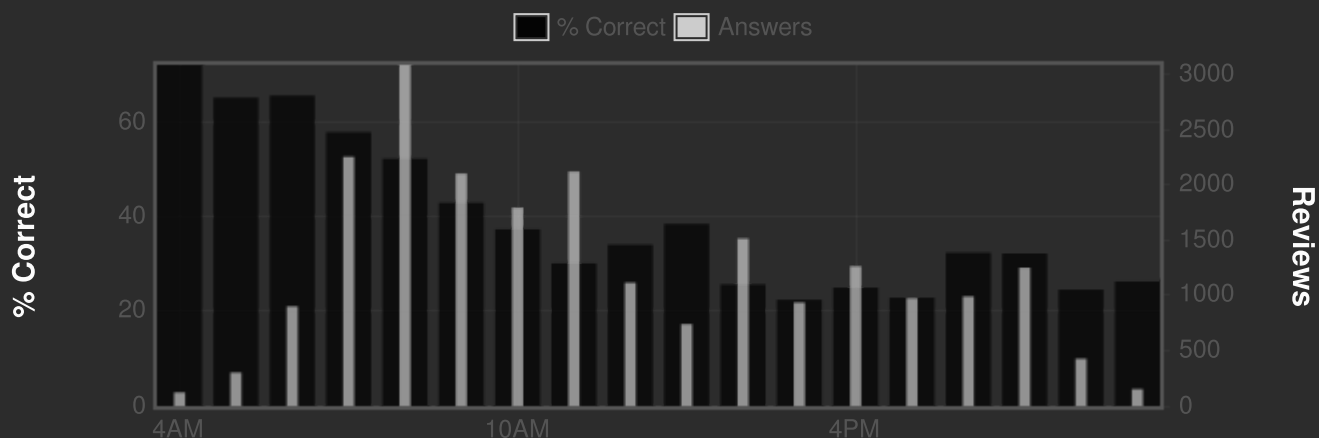
Delays until reviews are shown again.



Average interval: **24 days**  
Longest interval: **3.6 months**

# Hourly Breakdown

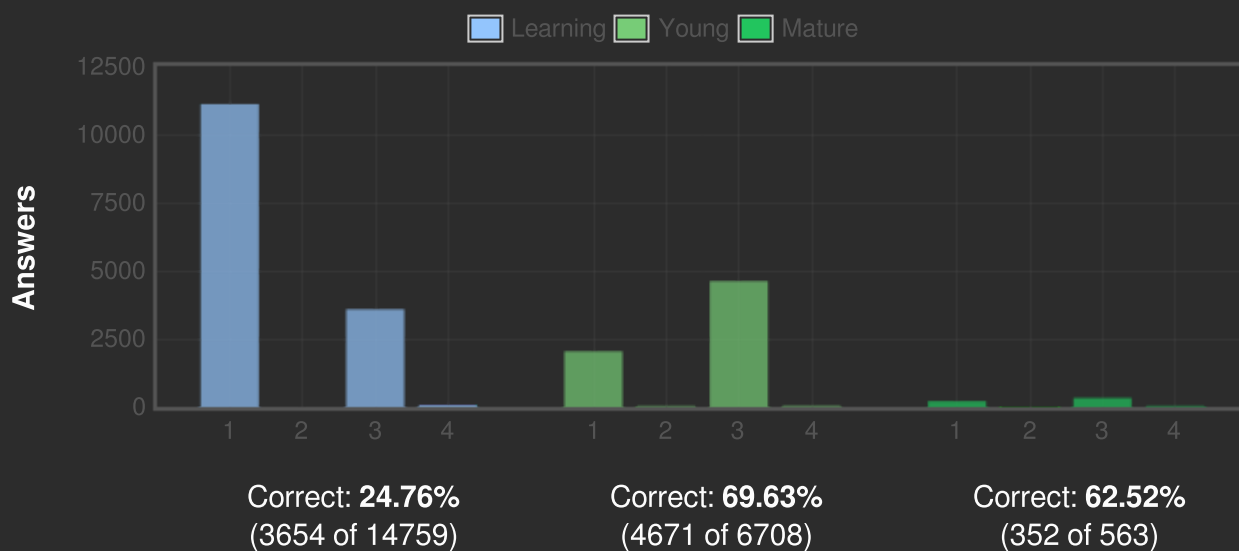
Review success rate for each hour of the day.



Hours with less than 30 reviews are not shown.

# Answer Buttons

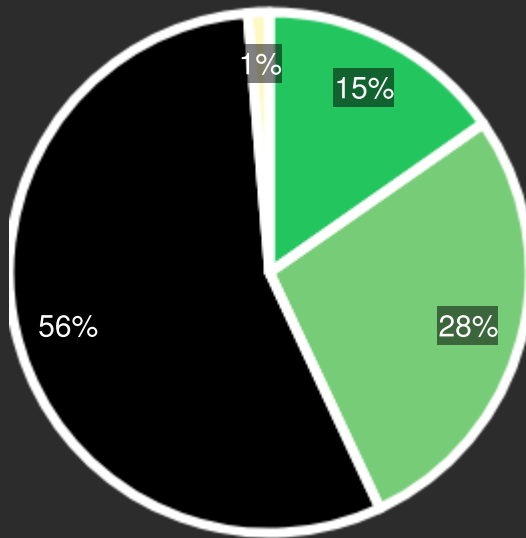
The number of times you have pressed each button.



# Card Types

The division of cards in your deck(s).

■ Mature: 995   ■ Young+Learn: 1802  
■ Unseen: 3616   ■ Suspended+Buried: 87



Total cards:	6500
Total notes:	6500
Lowest ease:	130%
Average ease:	224%
Highest ease:	295%

A card's *ease* is the size of the next interval when you answer "good" on a review.

Generated on Sat Oct 5 18:49:50 2024

Scope: 🇰🇷 한국어 (韓國語)::커뮤니티의 만들어진 덱::Korean Vocabulary by Evita

Period: 1 month