

PHAST INTO

NEW YEAR 2025

All the hot new trends
coming up in **2025**

Kaneko Lumi at the Met
Gala and her new exhibit

National Miner Day



307591092516



Phase-connect FANZINE №.3

New year 2025

- .Golden kaleido week . MN 1
- .Pippa coffee . Snowkin 3
- .Star county runners . outchiemama 4
- .Ember amane first EP .Naoki 5
- .Is phase coffee good for you? . Kannanii 6
- .Book of memories Act I . Cawfee7
- . A very pipkin birthday party . PixelRush 9
- .Emburger time . A_dogart 11
- .Phase Ramen . Yasai 13
- .Winter Lia Vibe . magicalgirlcrisis15
- .Phase Times esports . KKZullu 16
- .Saintma miami . Oaksentinel/OCBM 17
- .St jean’s Pyre . Azar/Sonnet 19
- .500 hours of summer . eurgerking/bingopanic 21
- .Daily lumi NY . Pupii/OCBM 22
- .When next summer comes . Vanilla/Sonnet23
- .Cow Day . Feef 25
- .keeping it warm . Cafflin’ 26
- .Lemon Day . Naokomama /Sonnet 27
- .Autumn Vibes . Bohemianrapcity 29
- .Drinking lesson . Steeeph 30
- .Idol Days 2025 . Cafflin’31
- .Phase manor .Juicey cloney 35
- .Phase manor pt2 . Cafflin’ 37
- .Miner Day 2025 . Valefor 39
- .Lumi Coffee . Pupii 40
- .Christmas spirit . Maxmeius 41
- .Draw maemi like one of your sadgirls . tunafan68 43
- .My star atop the tree . Deniedart 44
- .Merry christmas . Lyrinne 51

ON THESE COLD WINTER NIGHTS
LET YOUR OSHI WARM YOUR HANDS



**Tell yuor
Parentals
"Buy me
Star County
runners
or go to AITCH"**



Become the Goobenheimer
of the phaseconnect Jungle

two dames, kickin ass
and takin names,
reclaiming the streets
from the Queen Crazy, Her lackeys
and a complete lack of federal funding
to create more than 4 drawings.

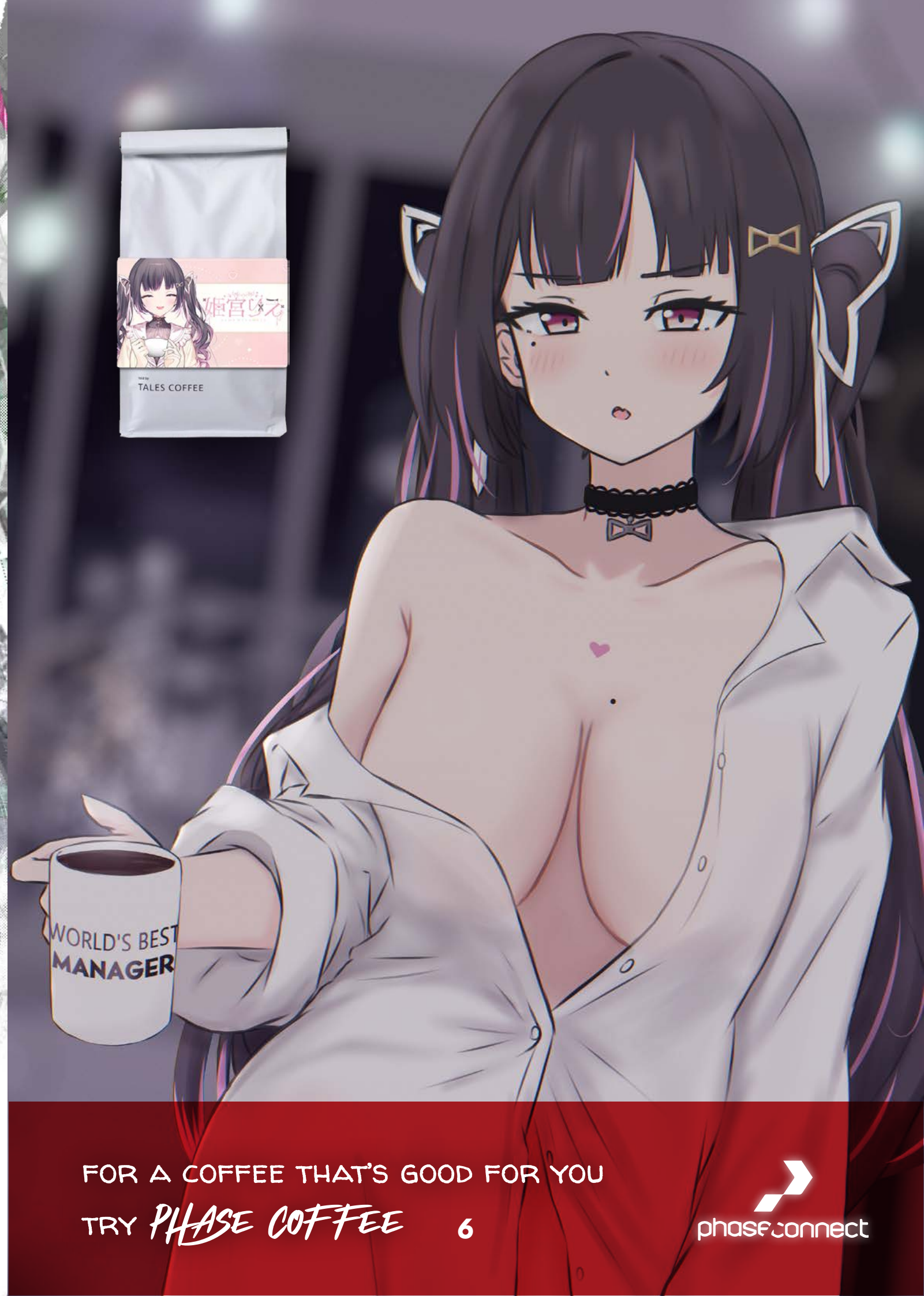


Join shiina and Jelly
as they roll into your homes
on yuor personell computer
and or Seaga Dreamcrest
this vinter season, and defeat
the nefarious silly billies
and meet many icon memorable friends.
get your copy ASAP!!!!





5



FOR A COFFEE THAT'S GOOD FOR YOU
TRY *PHASE COFFEE*

6



30
FEB

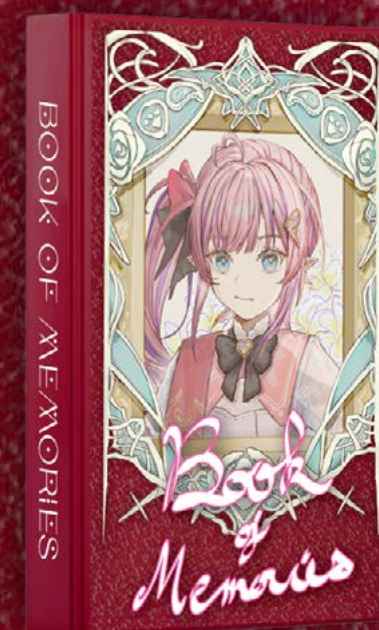


Book of Memories

7



Available for free with the purchase of two bags of the crispiest Memory-Chan brand Phase Coffee™



Queen Memory is on a quest: to reclaim her lost Kingdom. Born a beautiful and powerful queen, Memory was a just and kind leader until one day, an evil force from outside her kingdom invaded and took over! Now it's up to Memory and the Unicorns (that's her fan name right?) to gather their strength and retake their home! Action, adventure, and a heartwarming tale of what it really means to be a Princess.



8

03
MAR



Peepa Day
2025





MACHINE
BROKE
N



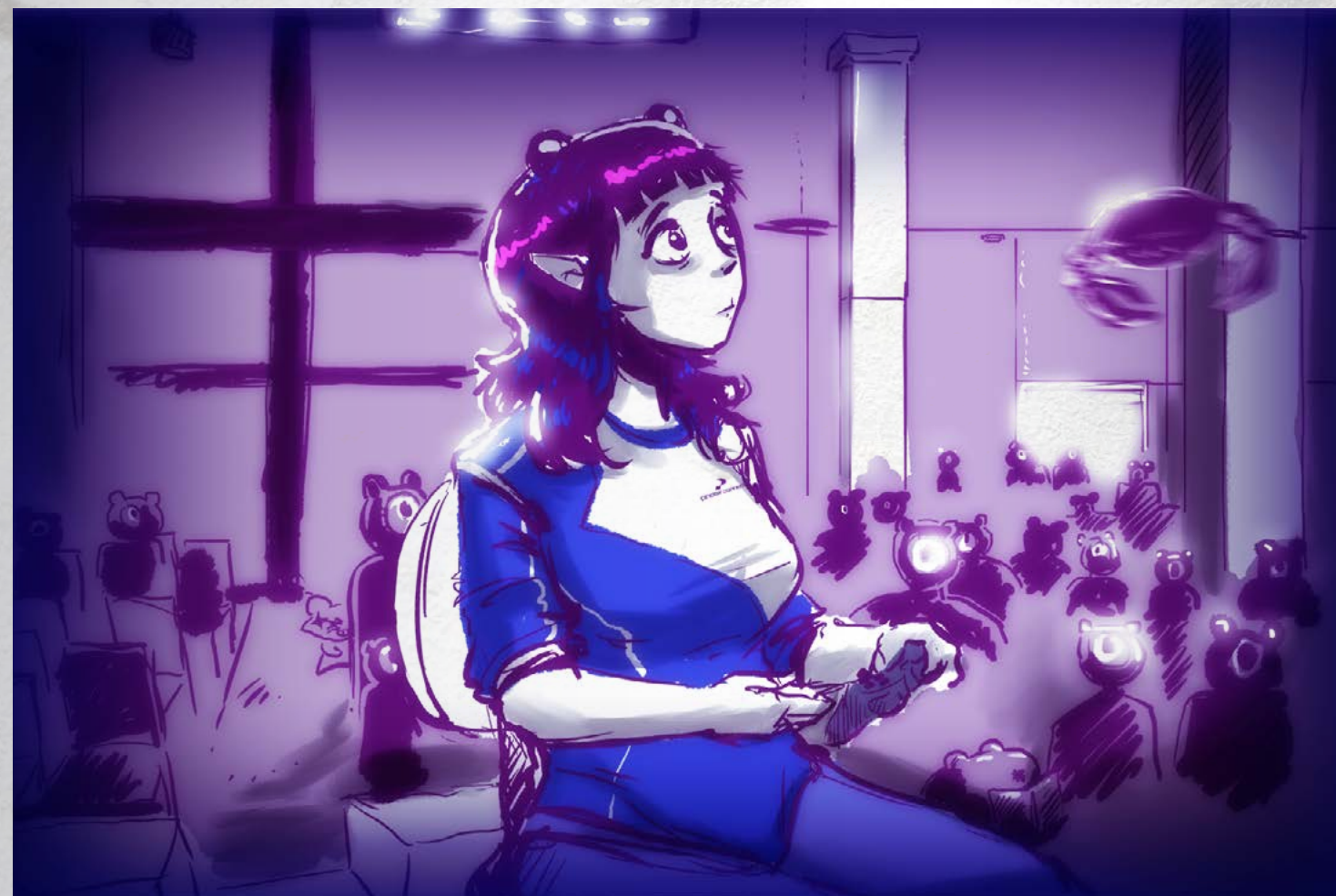
introducing :

Phase RAMEN



ITADAKIMASU!

Enjoy the hot, steaming miso broth of your favorite Phase Ramen! Get ready for the upcoming year with the girls, and prepare to feast your tastebuds on Sakana's culinary experience coming to you live in Phase World!

***Mysterious sea-slug assaults top Civ 6 player with crab at tournament***

the crab was alive

It was a tournament just like any other, up until someone hurled a crab at Dizzy «Dirty Booba» Dokuro.

Ms Dokuro, long time professional sadgirl who represents the Phase connect coffee company was playing in the grand finals of Yosha 2024 against her team mate Muu muuy when, after avoiding elimination and making a tense run through the losers bracket by tryharding as Shoshone, Dizzy claimed the grand finals, a truly fantastic moment for this Civ pro...

That was until an irrate woman in the crowd decided, out of nowhere, to start throwing crustaceans at the champion in an act that can only be described as a dick «venice player that just uses city states to harass early game» move.

23
APR



17



In a land beyond your wildest imaginations, fair maidens fight for the honor, glory, and the eternal victory of the Grand Duchy of PhasenKanecten.

Led by King Sak-ana, a noble scion of the house of Ware and promised to the graceful Lady Dokoro and her large tracks of land and Cof-ve rich mines. These brave warriors vanquish many a magical foe. Witches, Dragons, strange men on the internet, there are few who can withstand their awesome might.

See now, how The venerable Lady Texas Manchester vanquishes the mighty yet sleepy dragon EL Nassir. Will she be able to defeat the Great Witch Der Michi and her mimic hat? Or will the witches gorilla familiar spell her doom?

See too, the Royal Stark Knight Jellius, bowed but unbroken. Who is this baba, and is she you? No matter, Jellius Minimus will defeat all foes, be they Baba, bloons, or other threats that hail from her far off MuddHutlandia she hails from.



18



15
MAY

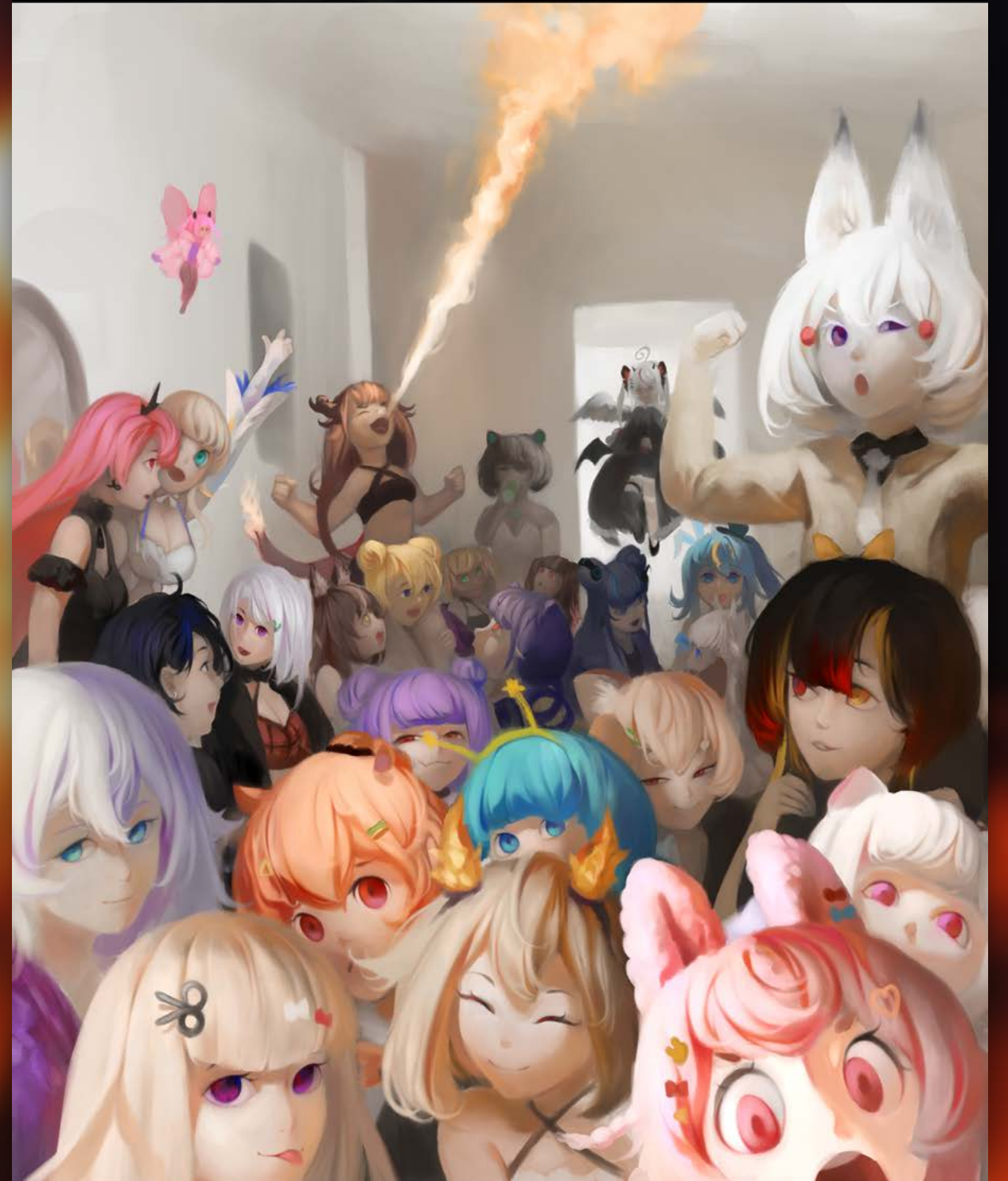
Saint Jean's Festival Pyre

The room was sparse,
the walls were bare,
But festive mirth was present there.
A crowded party, full of zeal,
A crew of human and unreal.
A group of ladies, each a friend,
Together for the year to end.



Pipkin Pippa Phase-Connect

the damage fees will be on the company
card LET'S GOOOOOOOOOOOOOO #phasecon202



moments before disaster



06.21.25



Foundational,
FASHIONABLE,
Forward thinking.

Kaneko **Lumi**:

FOR A SHINING FUTURE.

25
JUN

WHEN NEXT SUMMER COMES



23

A GANG OF ROYAL WOMEN AT THE BEACH,
THEIR SWIMSUITS FLATTER FORM OF BUST
AND PEACH.

THEY DRAW THE EYE, DISTRACTING IN THEIR
SHOW,
THAT WE FORGET THE WAY THEIR FACES
GLOW.

TO SHARE THEIR COMPANY ON MISTY SAND,
WOULD BE THE GREATEST FUN IN ALL THE
LAND.



THE RACE BEGINS FOR DOG AND SNAKE,
A SWIM AND RUN WITHOUT A BREAK
A THOUSAND METERS, MAKE THAT TEN,
WILL GIVE A FISH ITS GILLS AGAIN.
GET READY, SET, AND HEAR THE GUN,
YOU'LL WIN THE YEAR BY HOW YOU RUN.

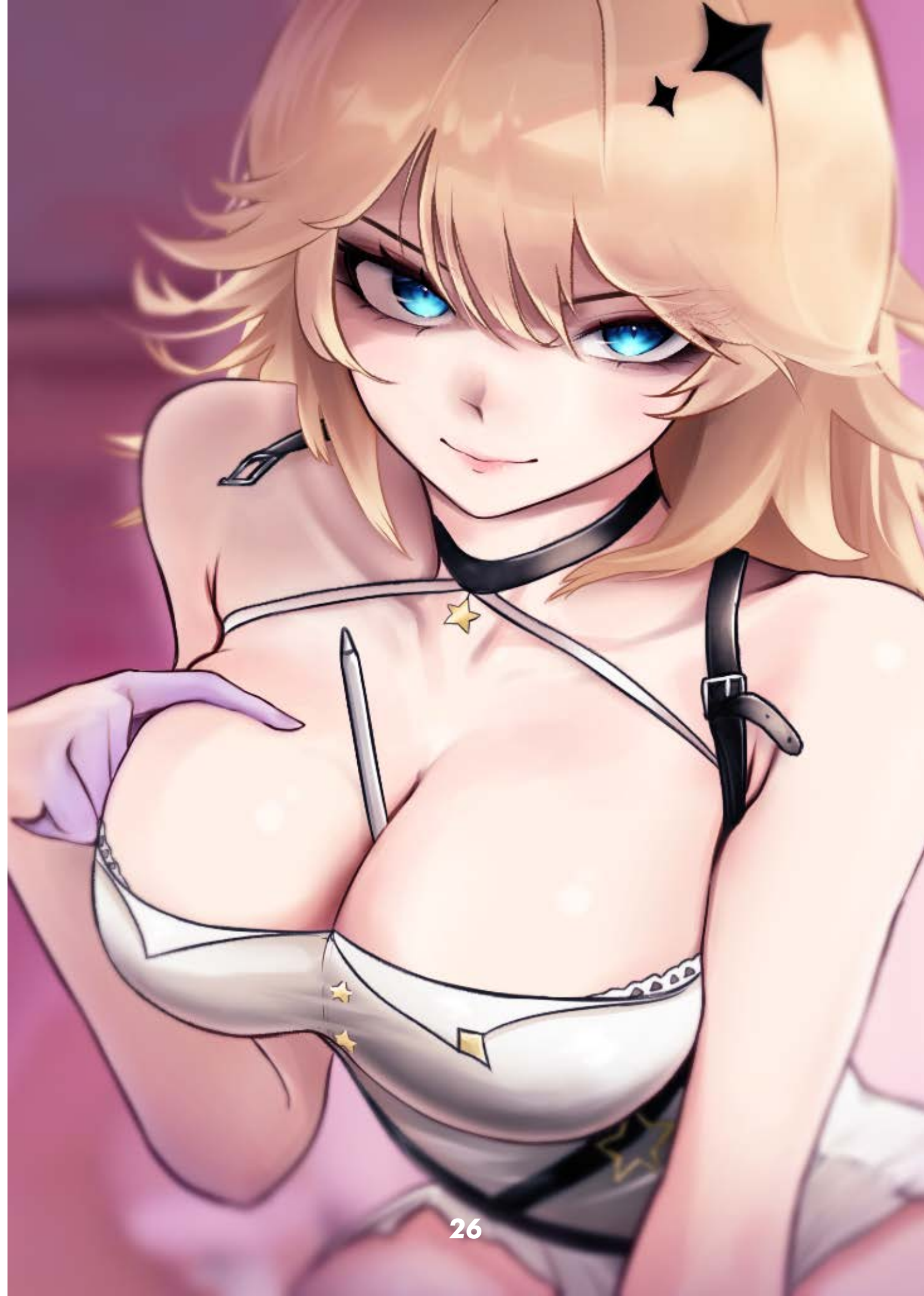
IF YOU COULD SHARE ON MY BEHALF,
I'D HAVE IT BE THE WAY WE LAUGH.
AT WORK EACH DAY ALONG MY PEERS,
I'M ALWAYS SHEDDING HAPPY TEARS.



24

08
JUL

COW DAY OUTFITS



*They lay upon the flower field to rest.
Each lady wrapped in fabrics of the best.
Of blue and red, of pink and black and white,
Elaborate yet girly in delight.
A future in the stars is what they see,
An idealistic dream of what they'll be.*

*On lemon day, do not think ill of all the
harlots that might spoil your beautiful citrus*





Meet Coffee chan !

THE DRINKING LESSON

by Kaminari Clara

I love my coffee like I love my women... HOT!

Clara is a coffee expert. In her section, she gives you the best tips to enjoy your drink. Alongside Clara, you will discover a new face of coffee.

Today, she teaches you a popular way to drink coffee : the Cold brew

COLD BREW, the cool way to drink coffee

Why is it cool? Because it's a cold drink hehe. Cold Brew is a long infuse coffee drink. Unlike other drinks, it has a more pronounced taste.

What you need ?

- water
- ground coffee
- a jar

- 1- Fill the jar with coffee and water. You can also use a french press, the ratio recommended is 1:8 ex: 75g of ground coffee : 600 ml water. For a stronger taste, go for 4:5 ratio.
- 2- Let it rest for 12 or 24 hours at room temperature or put it in your fridge.
- 3- Pass the infusion through a coffee filter (for french press users it's an easy step).
- 4- Enjoy :D You can put water, if the drink is too strong milk is also a good option! (Don't forget to put ice cubes!)

27
OCT

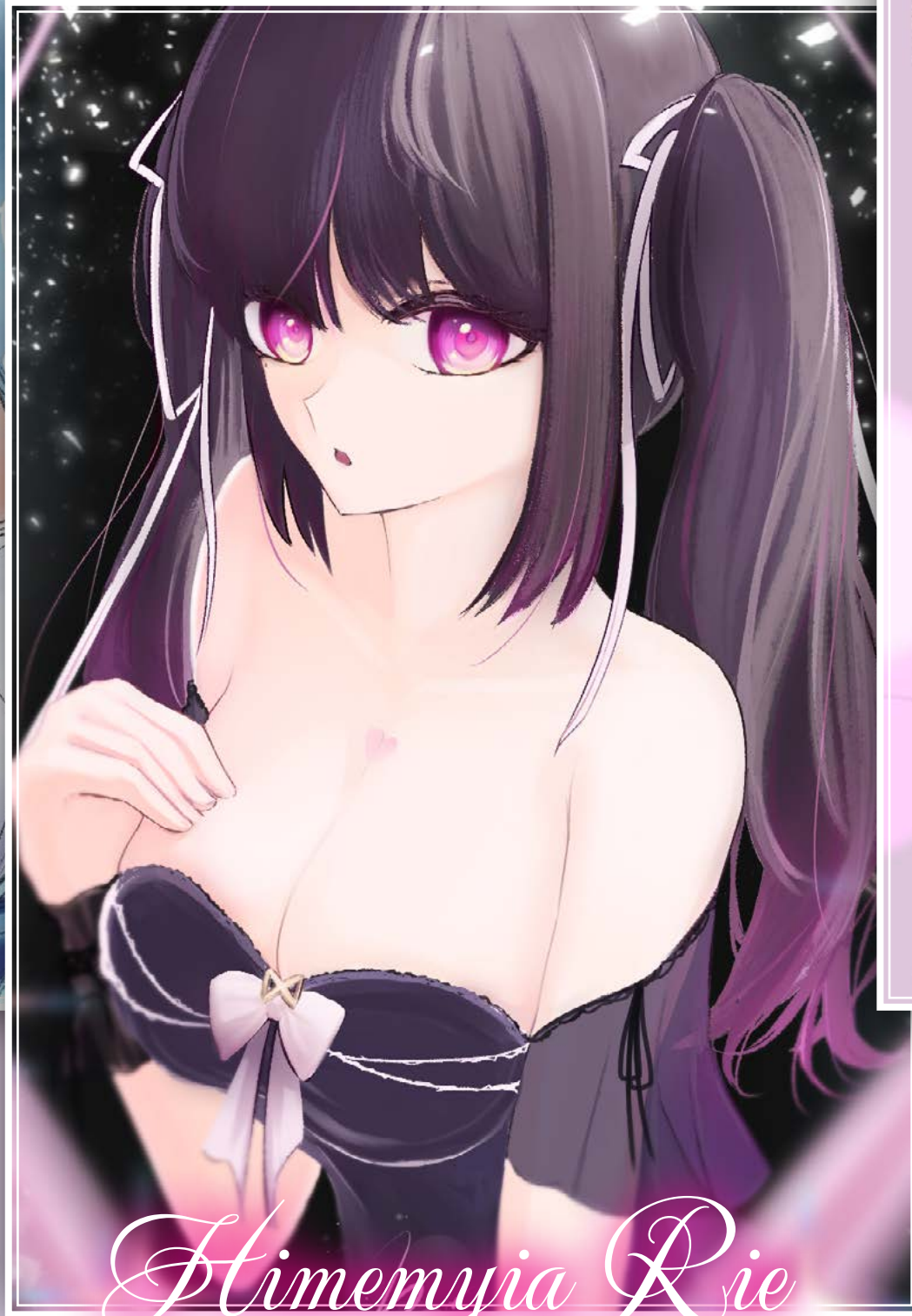


Idol Party
2025

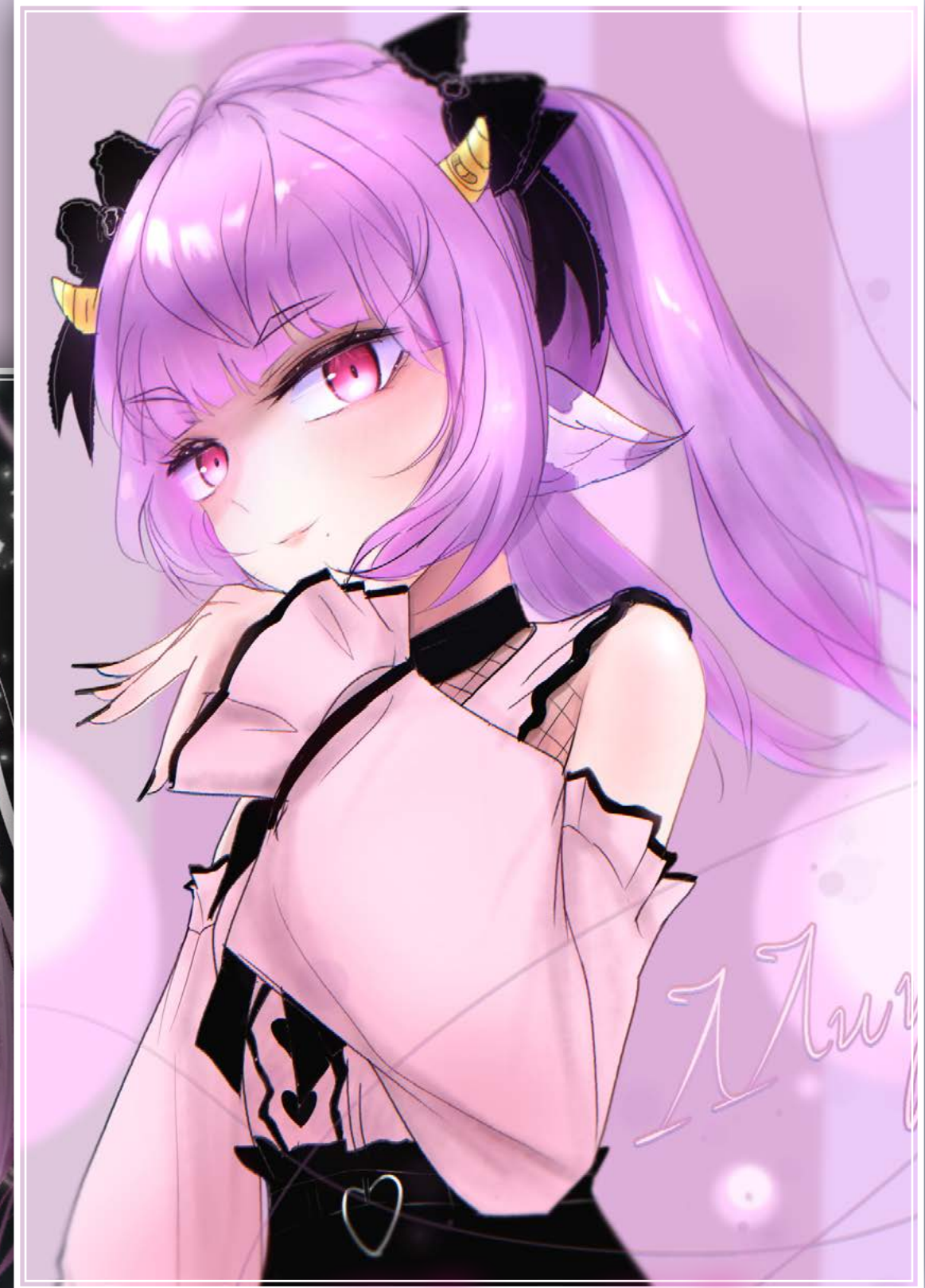
Featuring



Delly Hoshirumi



Himemyria Rie



Shuru Shuru

31
OCT



WITNESS AS SCIENCE AND ALCHEMY
UNITE TO MAKE THE DRINKER
IRRESISTIBLE!

35



COME SEE THE WITCHES FLY THROUGH
THE NIGHT SKY OF...

PHASE MANOR



36



04
DEC

Miner day 2025



Be stupid faster, drink phase coffee

Ever being tired of being stupid? While indulging in our great selection of coffee!
With phase coffee you can say goodbye to those days! What are you waiting for?
Be stupid AND full of energy, Get some Phase coffee now!



25
DEC



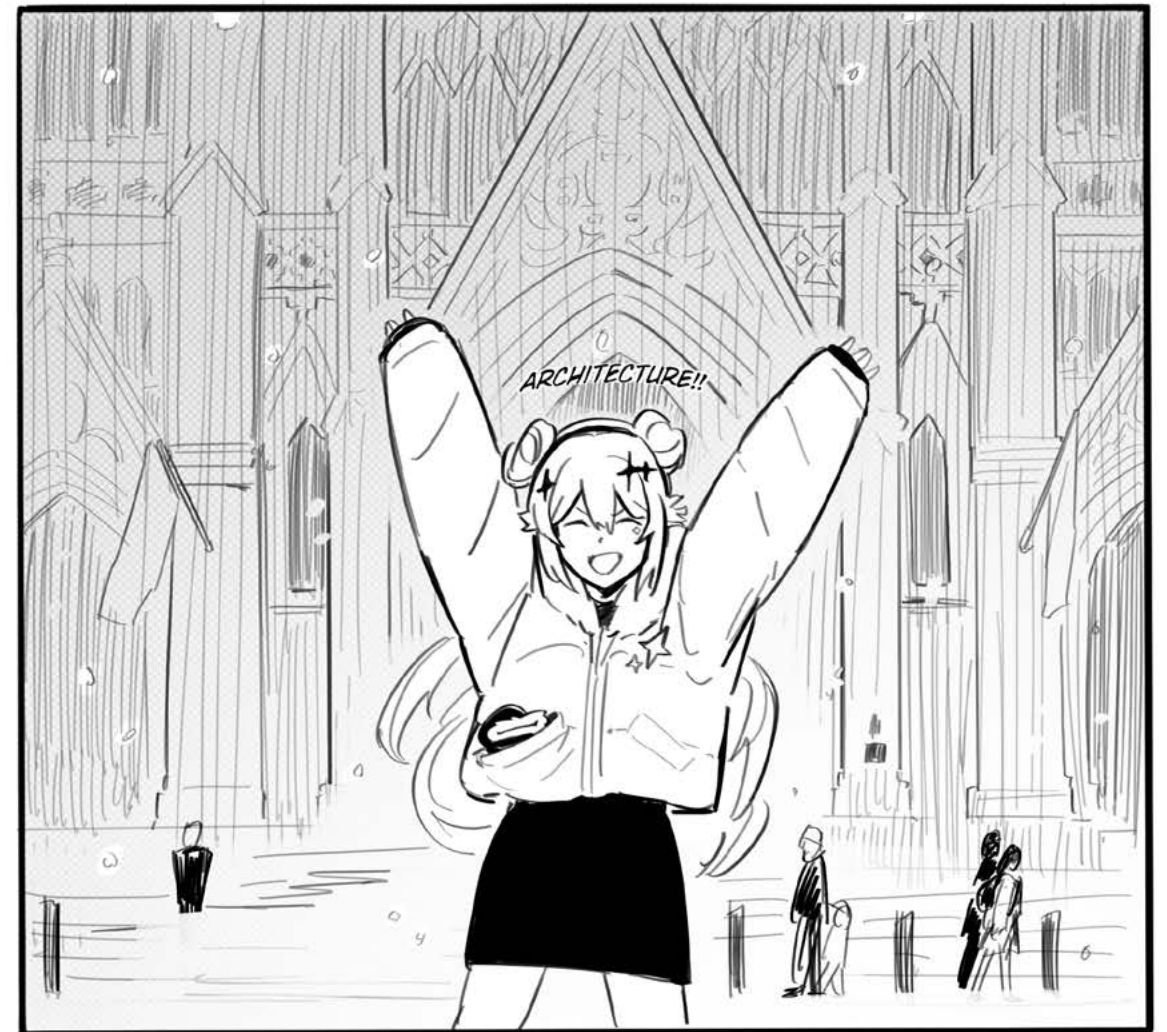
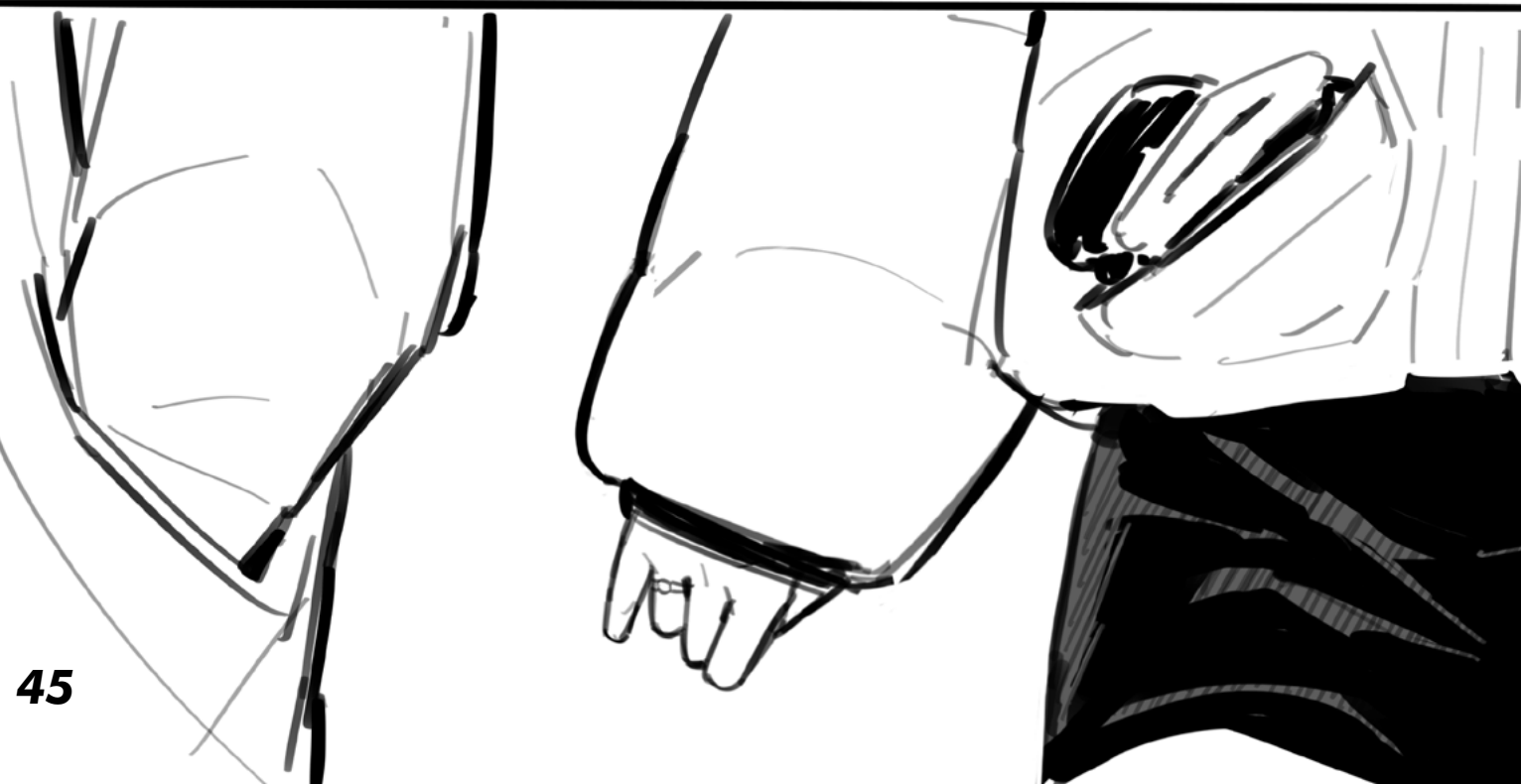
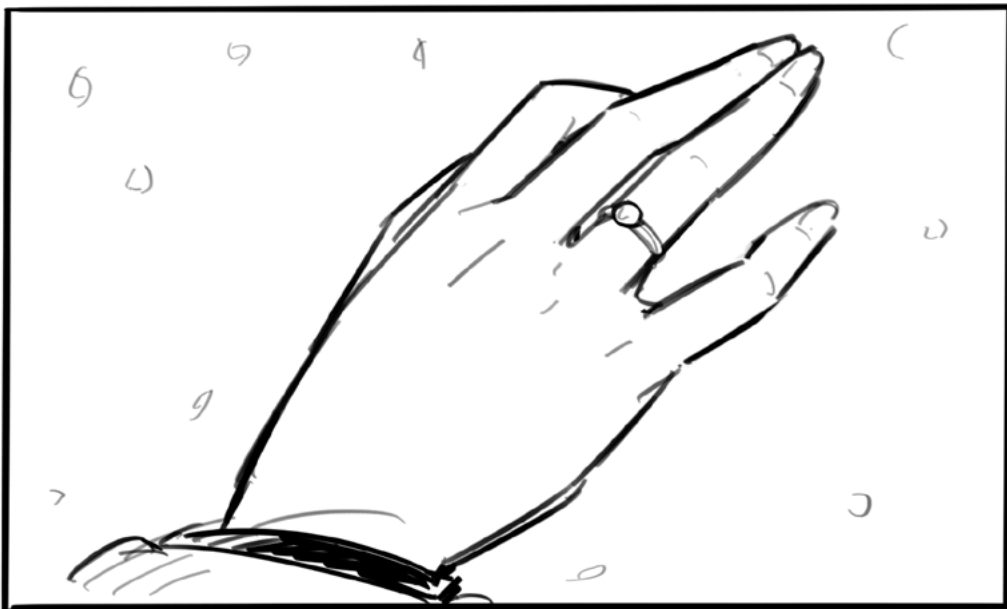
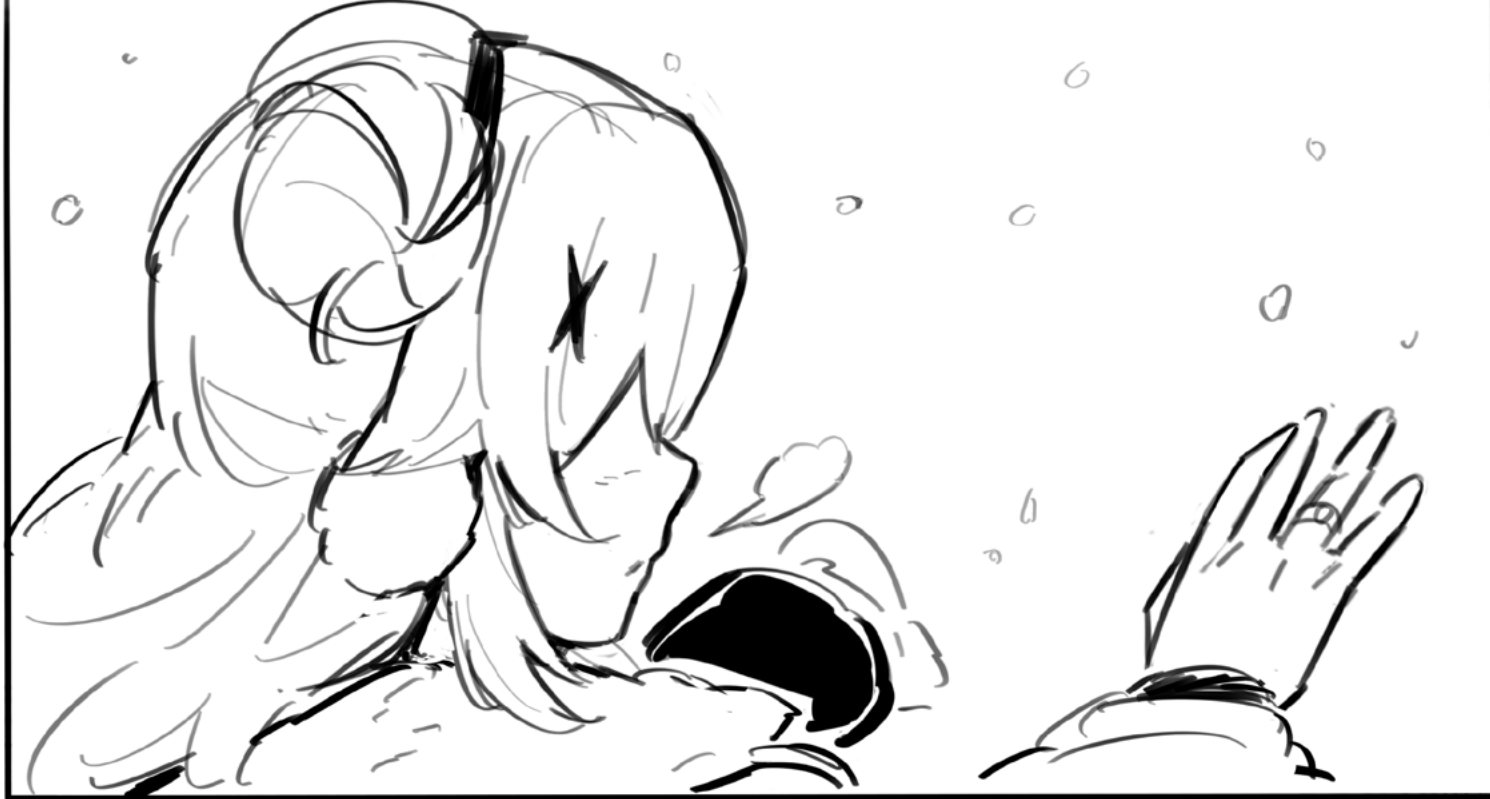
Happy Christmas

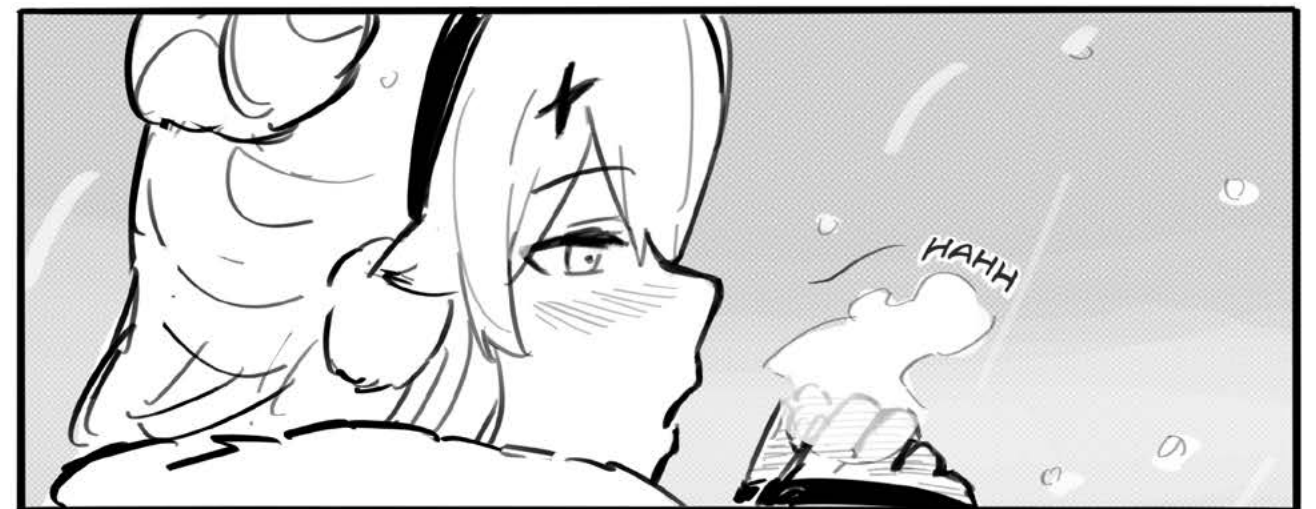
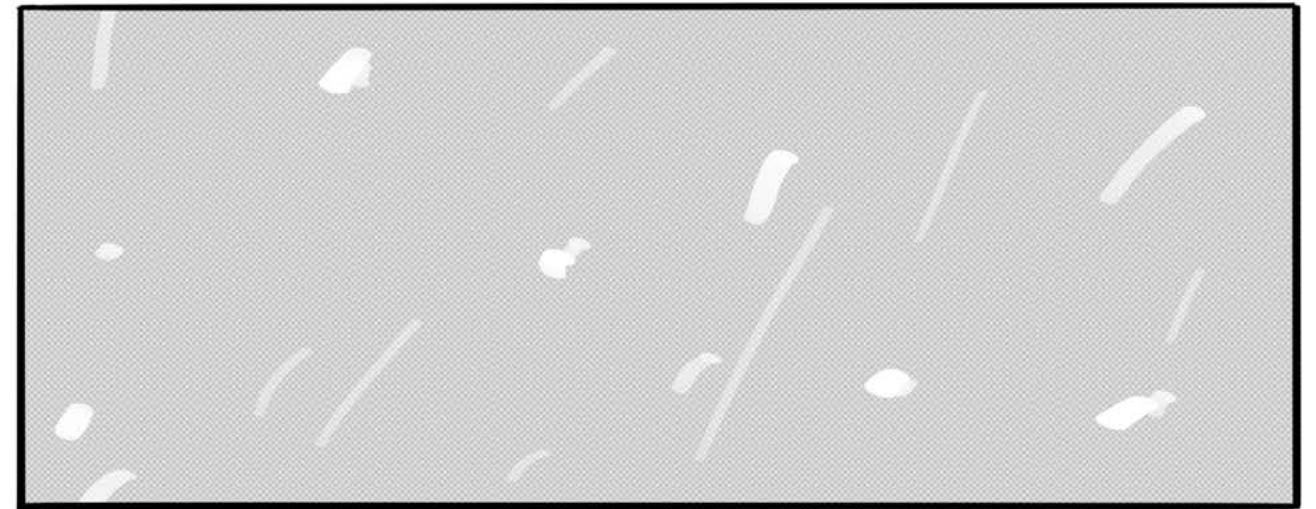


43



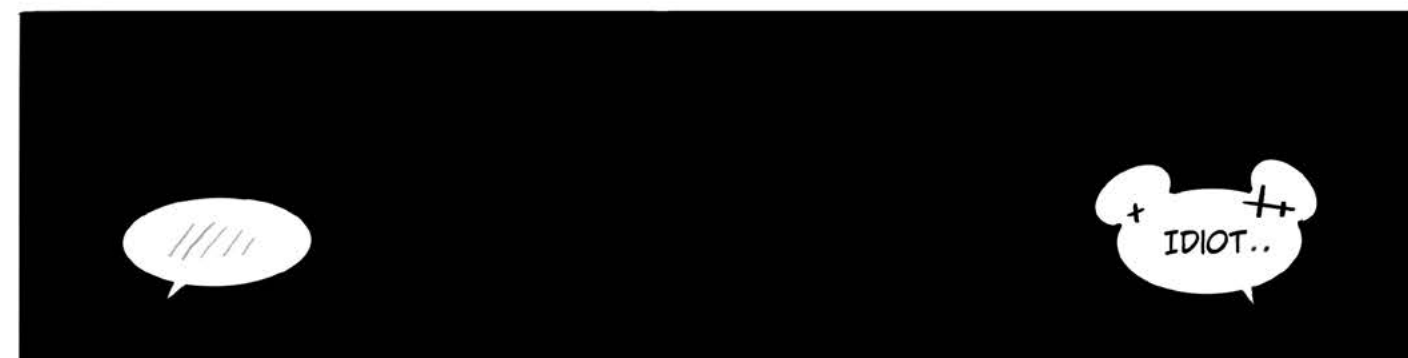
44







SO...





Steeeph

Maxmeius

Feef♡

Phany

Canfus



ZAR

Tuna Fan
68

Zyckro



Collin'

Eurger
King

≡ Teokob ≡

CBM

Son of Sonnet

Bingo
Panic

Valefor

kannanii 707

TANGENTERINES

Naoki

crisis

MAJ



